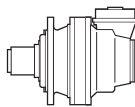


i_{eff}										T_{2max} [Nm]	P_T [kW]
	1500			1000			500				
	n_2 [rpm]	T_2 [Nm]	P_2 [kW]	n_2 [rpm]	T_2 [Nm]	P_2 [kW]	n_2 [rpm]	T_2 [Nm]	P_2 [kW]		

EC 2091 - PDA 2091

11.22	134	3977	56	89	4492	41.9	44.6	5530	25.8	15000	18
13.89	108	4137	46.8	72	4672	35.2	36.0	5752	21.7	15000	
15.98	94	4229	41.6	63	4776	31.3	31.3	5880	19.3	15000	
17.68	85	3970	35.3	57	4484	26.6	28.3	5520	16.4	15000	
20.34	74	4547	35.1	49.2	5135	26.4	24.6	6322	16.3	15000	
24.59	61	3971	25.4	40.7	4485	19.1	20.3	5522	11.8	15000	
28.29	53	4569	25.4	35.3	5160	19.1	17.7	6353	11.8	15000	
33.70	44.5	4794	22.4	29.7	5002	15.5	14.8	5351	8.3	15000	
42.37	35.4	3604	13.4	23.6	3775	9.3	11.8	4067	5.0	15000	

1500
HOURS LIFE



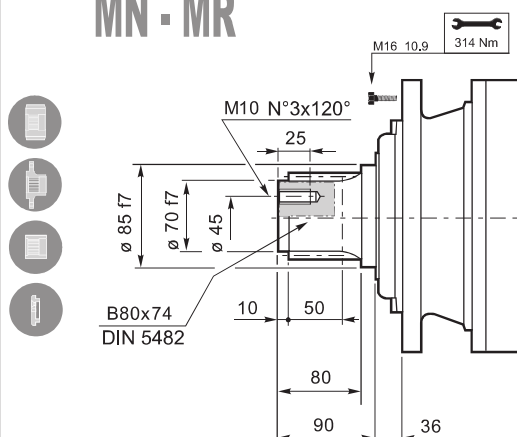
091

i_{eff}	1500			1000			500			T_{2max} [Nm]	P_T [kW]
	n_2 [rpm]	T_2 [Nm]	P_2 [kW]	n_2 [rpm]	T_2 [Nm]	P_2 [kW]	n_2 [rpm]	T_2 [Nm]	P_2 [kW]		

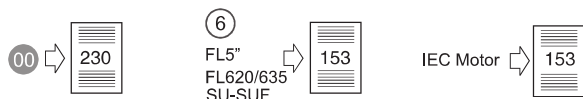
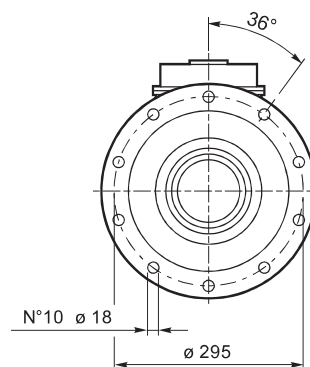
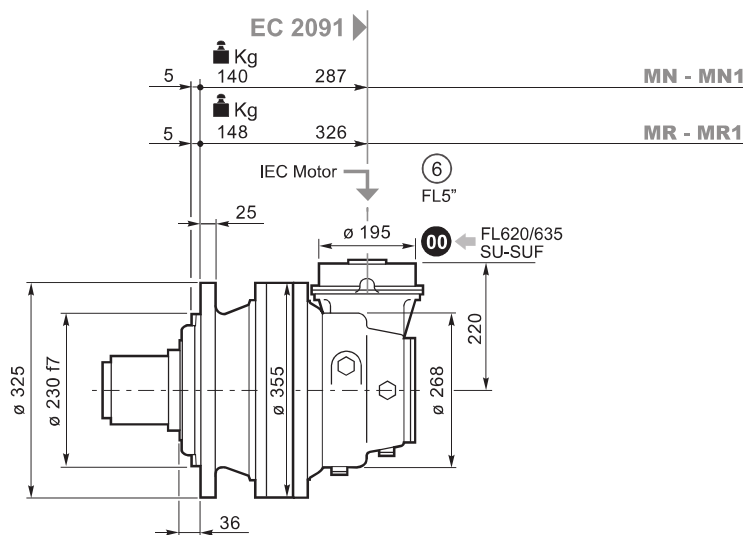
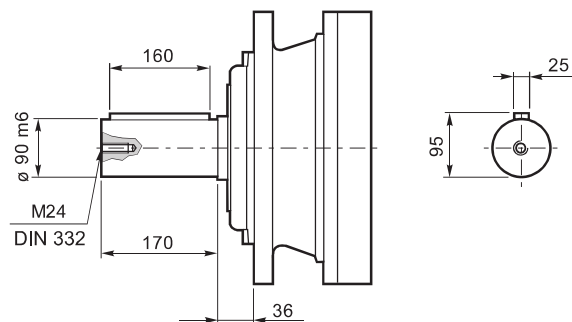
EC 2091 - PDA 2091

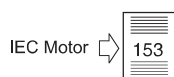
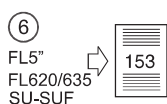
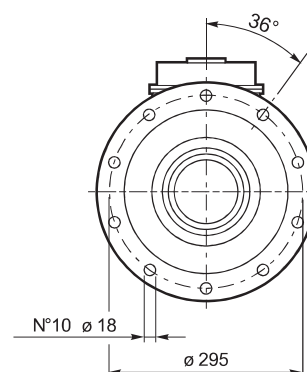
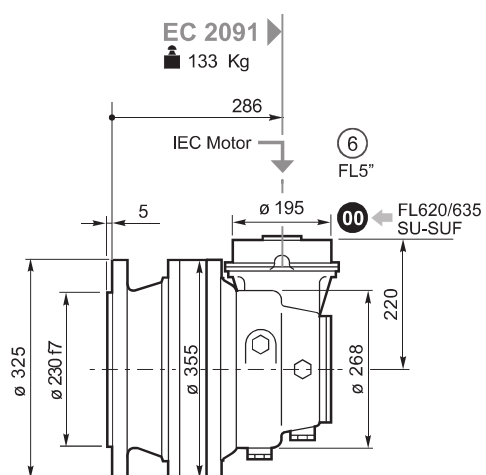
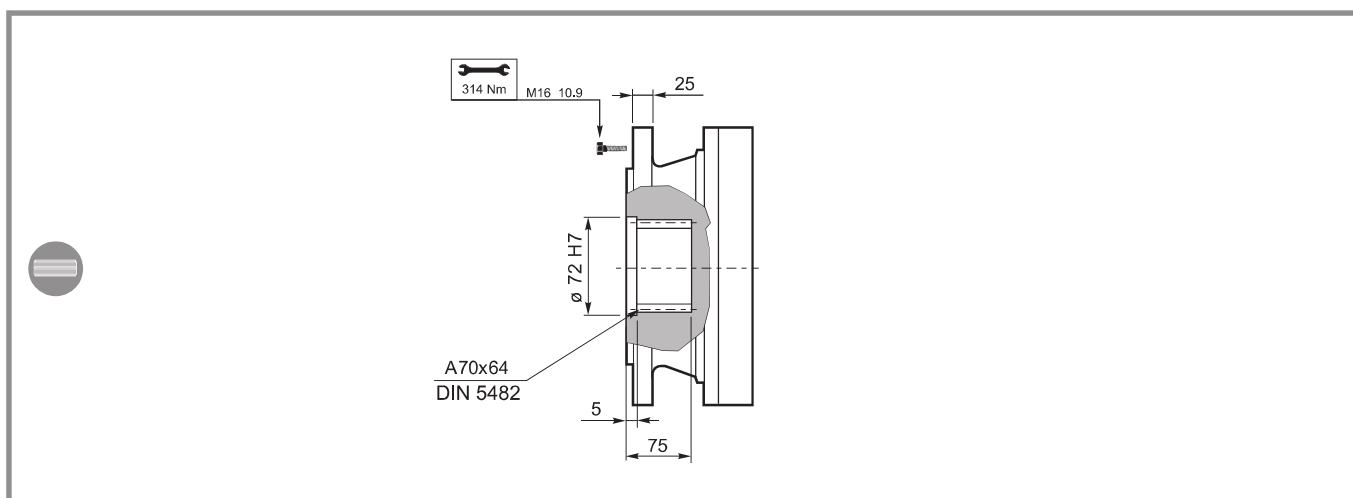
11.22	134	7027	98	89	7936	74	44.6	9771	45.6	15000	18
13.89	108	7309	83	72	7955	60	36.0	8774	33.1	15000	
15.98	94	6799	67	63	7105	46.6	31.3	7796	25.6	15000	
17.68	85	7014	62	57	7922	46.9	28.3	9233	27.4	15000	
20.34	74	6983	54	49.2	7280	37.5	24.6	8203	21.1	15000	
24.59	61	7016	44.8	40.7	7924	33.7	20.3	9218	19.6	15000	
28.29	53	7226	40.1	35.3	7594	28.1	17.7	8781	16.3	15000	
33.70	44.5	5696	26.6	29.7	5966	18.5	14.8	6925	10.8	15000	
42.37	35.4	4374	16.2	23.6	4576	11.3	11.8	5386	6.7	15000	

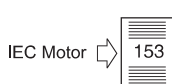
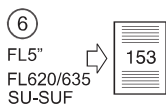
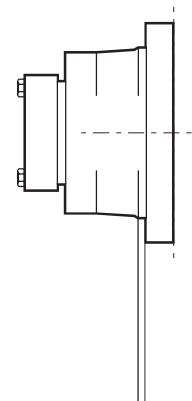
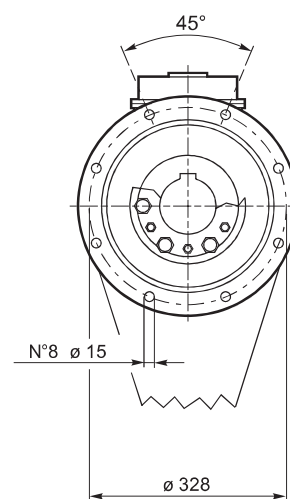
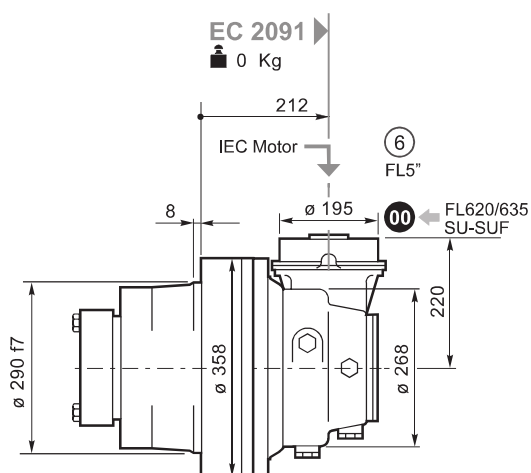
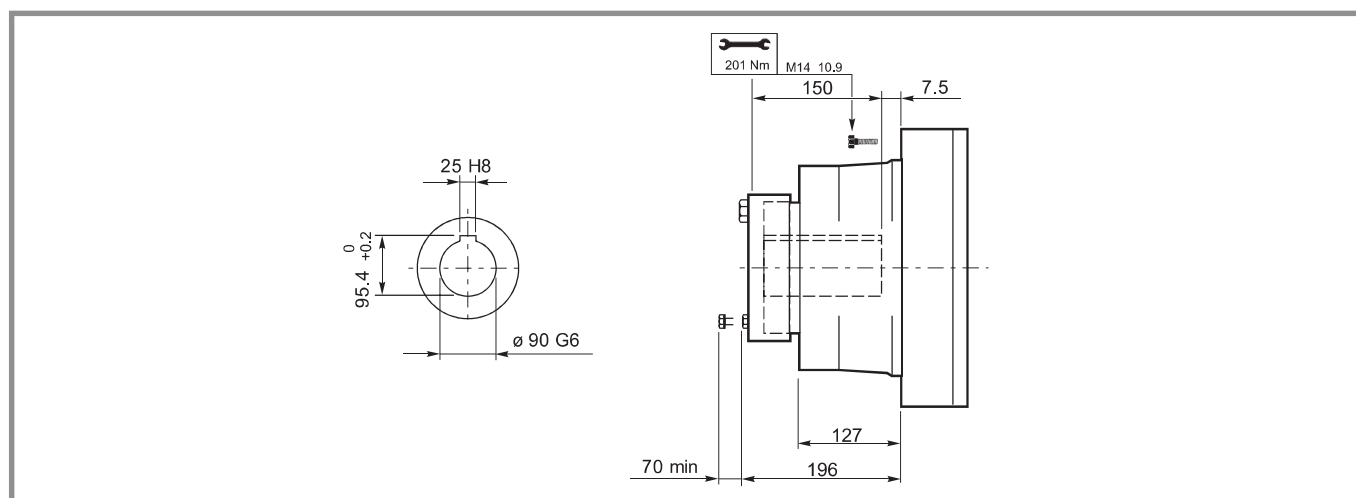
MN - MR

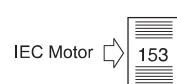
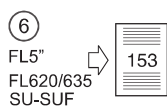
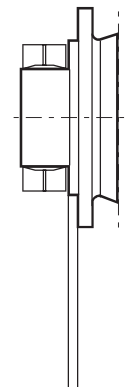
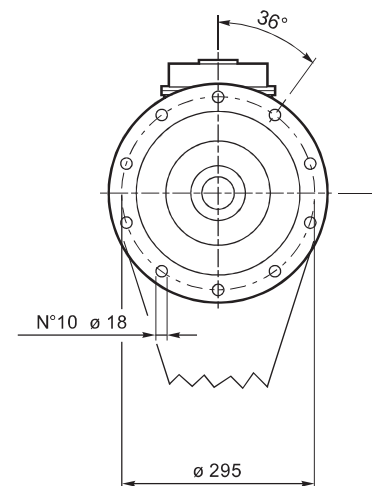
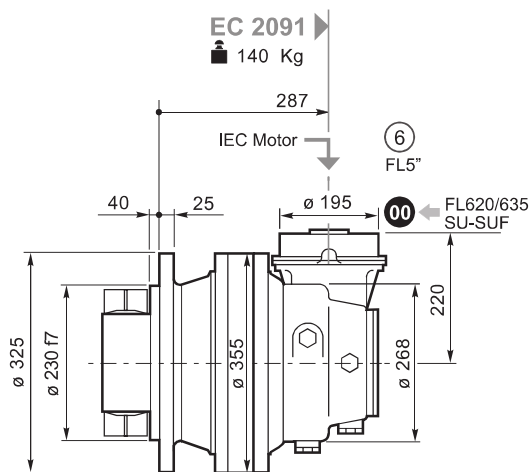


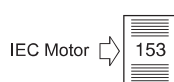
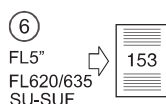
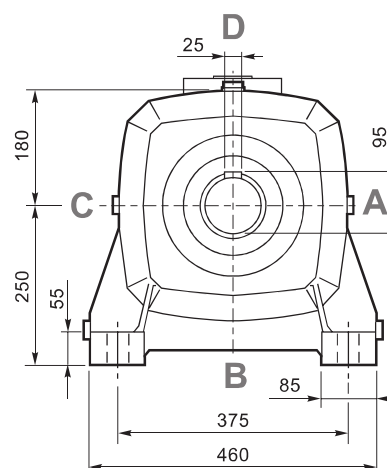
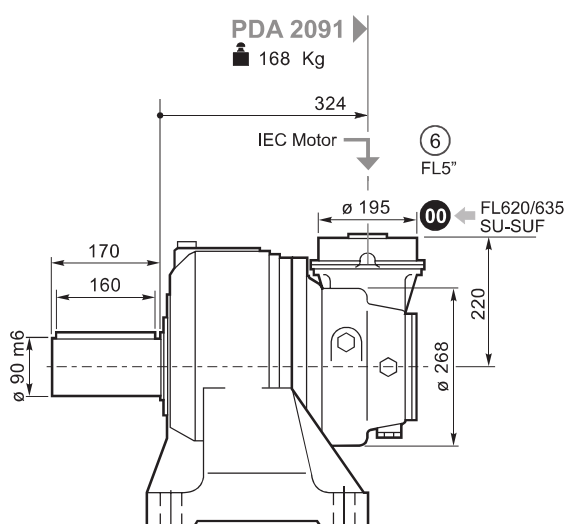
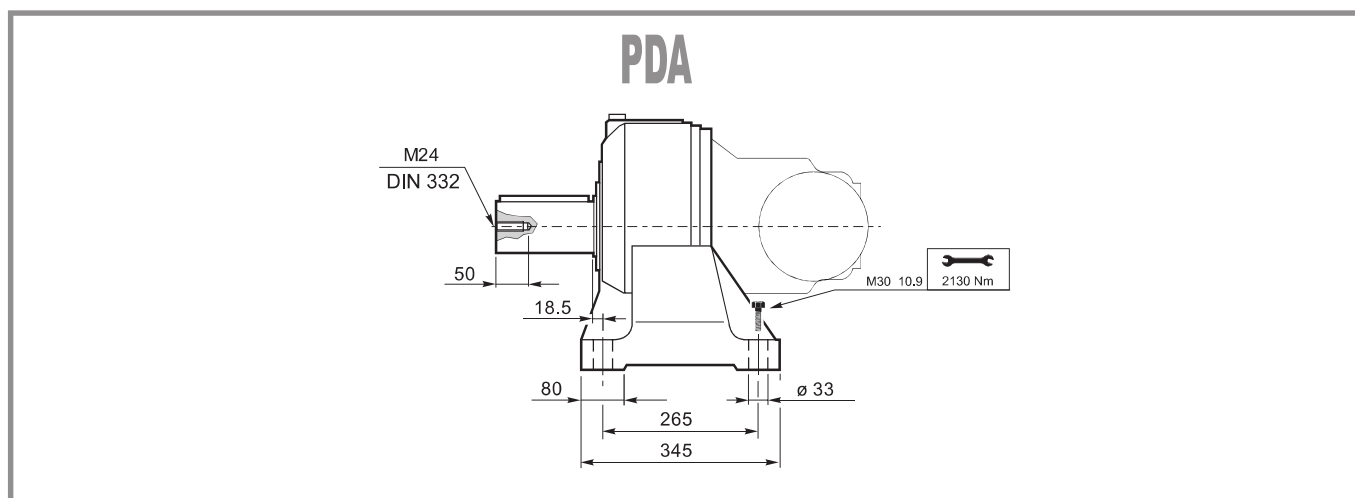
MN1 - MR1



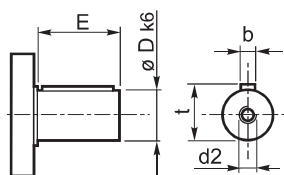




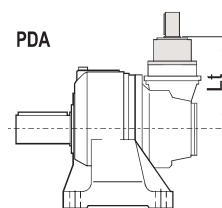




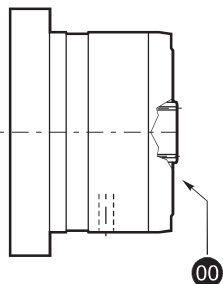
⑥ 48.82



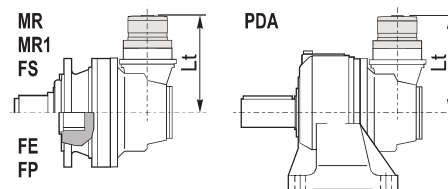
48.82	D	E	EC 2091	Lt
				MN-MN1-MR-MR1-FS-FP-FE-PDA
	48	82	EC 2091	317



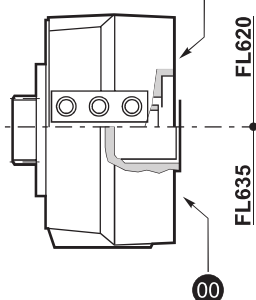
FL250-FL350-FL450 FL650-FL750



		Lt			
		MN-MN1 FE-FS	MR-MR1	FP	PD-PDA
FL250 FL350 FL450	EC 2091	408	408	408	408
FL650-FL750	EC 2091	422	422	422	422



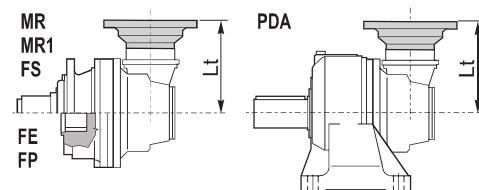
FL620.U-FL635.U

SAE A-AA
Shaft FE

		Lt			
		MN-MN1 FE-FS	MR-MR1	FP	PD
FL620.U	EC 2091	324.5	324.5	324.5	324.5
	EC 2091	311	311	311	311
FL635.U	EC 2091*	317	317	317	317

IEC Motor

EC 2091	MN-MR-MN1-MR1 FE-FS-FP-PDA	Lt						
		IEC 63	IEC 71	IEC 80 90	IEC 100 112	IEC 132	IEC 160 180	IEC 200 225
		277	279	264	285	352	383	394



Per le configurazioni in entrata: 48.82 (CC40 - CC41), FL5" è disponibile a richiesta il dispositivo antiritorno; per ulteriori informazioni e dati tecnici consultare il Servizio Tecnico Commerciale di Brevini Riduttori.

Anti-run back device is available for following input settings: 48.82 (CC40 - CC41), FL5"; for further information and technical data please contact Brevini Riduttori Technical Sales Service.

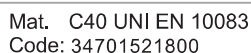
Für die Antriebskonfigurationen: 48.82 (CC40 - CC41), FL5" ist auf Anfrage eine Rücklaufsperre verfügbar. Weitere Informationen und die Technischen Daten erhalten Sie beim Technischen Verkaufsservice der Brevini Riduttori.

Pour les configurations d'entrée : 48.82 (CC40 - CC41), FL5" le dispositif antidévier est disponible sur demande ; pour toute information supplémentaire ou toutes données techniques, s'adresser au Service Technique Commercial de Brevini Riduttori.

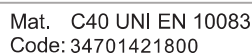
Para las configuraciones en entrada: 48.82 (CC40 - CC41), FL5" , se encuentra disponible a pedido, el dispositivo antirretrocesos; para ulteriores informaciones y datos técnicos, consultar al Servicio Técnico Comercial de Brevini Riduttori.

Para as configurações na entrada: 48.82 (CC40 - CC41), FL5" está disponível, a pedido, o dispositivo contra-recuos; para mais informações e dados técnicos, contacte o Serviço Técnico Comercial da Brevini Riduttori.

FA 090



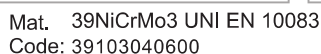
FR 090



Technical drawing of a mechanical part, likely a piston or a similar component, showing dimensions and tolerances. The drawing includes a central section with horizontal hatching, indicating a specific material or internal structure. Key dimensions and features are labeled:

- Overall Length:** $\varnothing A$
- Top Flange Thickness:** C
- Inner Bore Diameter:** $\varnothing 80\text{ M7}$
- Inner Bore Tolerance:** $A80x74$
- Inner Bore Diameter (Lower Section):** $\varnothing 85\text{ M7}$
- Bottom Flange Thickness:** 10
- Bottom Flange Width:** F
- Internal Section Width:** B

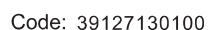
MS 090



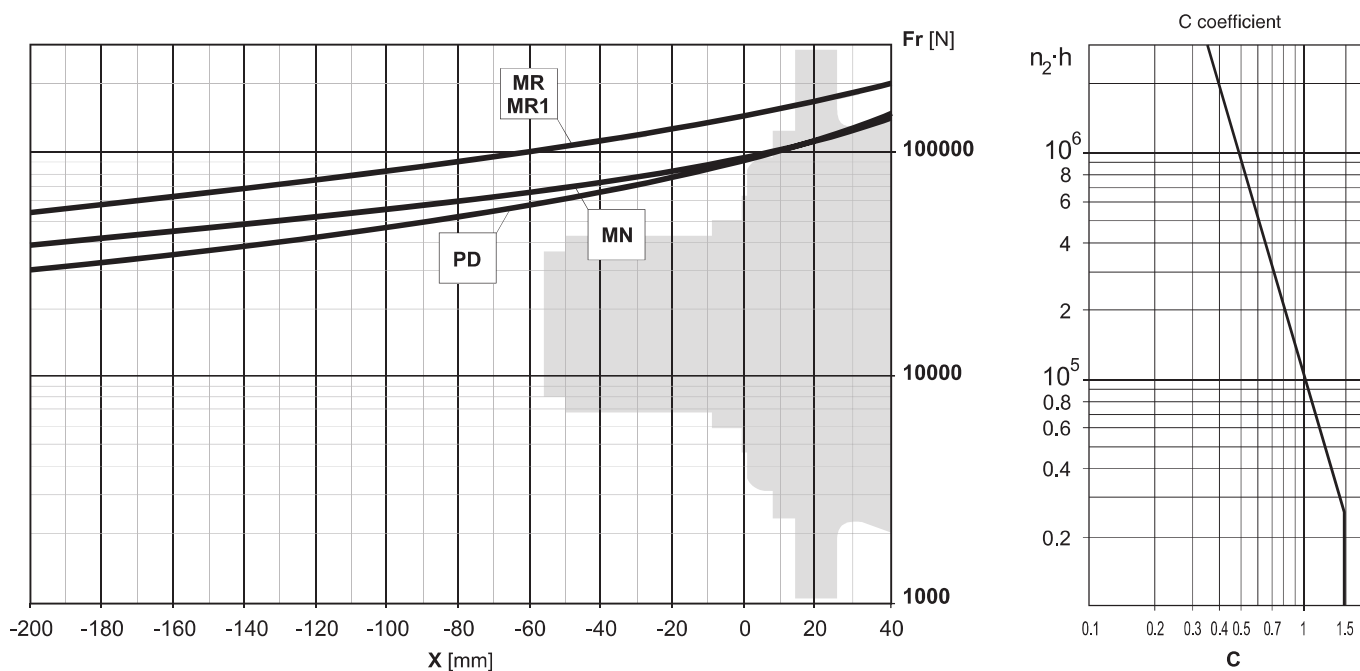
RDF 090



BS 090



Carichi radiali sugli alberi uscita / Radial loads on output shafts
 Radiallasten auf de Abtriebswellen / Charges radiales sur les arbres de sortie



Carichi assiali / Axial loads / Axialkräfte / Charges axiales / Cargas axiales / Forças axiais

