

Riduttori ad assi ortogonali

Bevel planetary helical gearboxes / Planeten-Kegelstirradgetriebe / Réducteurs à arbres cylindro-cônes / Reductores con ejes perpendiculares / Redutores de eixos ortogonais

	$n_1 = 1500 \text{ min}^{-1}$			$n_1 = 1000 \text{ min}^{-1}$			$n_1 = 750 \text{ min}^{-1}$			T_{2ISO} [Nm]	P_T [kW]	
	i_{eff}	n_2 [min^{-1}]	P_{N1} [kW]	T_{N2} [Nm]	n_2 [min^{-1}]	P_{N1} [kW]	T_{N2} [Nm]	n_2 [min^{-1}]	P_{N1} [kW]			T_{N2} [Nm]
BPH 316	35.67	42	17.9	3900	28	12.2	4000	21	9.3	4080	4600	20
	40.55	37	17.3	4310	25	11.9	4450	18	9.1	4530	5100	
	42.10	36	16.6	4290	24	12.2	4730	18	9.3	4810	5500	
	47.86	31	15.2	4450	21	11.4	5030	16	9.1	5350	5800	
	57.61	26	13.0	4600	17	9.6	5080	13.0	7.4	5250	5000	
	65.67	23	11.9	4780	15	8.5	5130	11.4	6.6	5350	5000	
	70.80	21	11.2	4890	14	7.9	5180	10.6	6.2	5370	5000	
	83.19	18	10.3	5260	12.0	7.1	5440	9.0	5.4	5500	5800	
	88.07	17	9.4	5090	11.4	6.6	5360	8.5	5.1	5500	5000	
	100.1	15	8.3	5140	10.0	5.9	5460	7.5	4.5	5500	5000	
	114.1	13.1	7.5	5240	8.8	5.2	5500	6.6	3.9	5500	5000	
	123.1	12.2	7.0	5300	8.1	4.8	5460	6.1	3.6	5500	5000	
BPH 416	130.2	11.5	5.4	4250	7.7	3.7	4360	5.8	2.8	4440	4600	16
	148.0	10.1	5.3	4730	6.8	3.6	4850	5.1	2.7	4940	5100	
	153.7	9.8	5.4	5020	6.5	3.7	5150	4.9	2.8	5240	5500	
	174.7	8.6	5.2	5580	5.7	3.6	5720	4.3	2.7	5830	5800	
	198.6	7.6	4.6	5630	5.0	3.2	5770	3.8	2.4	5880	5800	
	226.4	6.6	4.1	5670	4.4	2.8	5820	3.3	2.1	5920	5800	
	244.1	6.1	3.8	5700	4.1	2.6	5850	3.1	2.0	5950	5800	
	293.4	5.1	3.2	5770	3.4	2.2	5910	2.6	1.7	6000	5800	
	328.3	4.6	2.9	5810	3.0	2.0	5960	2.3	1.5	6000	5800	
	353.2	4.2	2.8	6000	2.8	1.9	6000	2.1	1.4	6000	5000	
	395.2	3.8	2.5	6000	2.5	1.7	6000	1.9	1.2	6000	5000	
	451.1	3.3	2.2	6000	2.2	1.5	6000	1.7	1.1	6000	5000	
	473.6	3.2	2.1	6000	2.1	1.4	6000	1.6	1.0	6000	5000	
	510.7	2.9	1.9	6000	2.0	1.3	6000	1.5	1.0	6000	5000	
	613.8	2.4	1.6	6000	1.6	1.1	6000	1.2	0.8	6000	5000	
	686.9	2.2	1.4	6000	1.5	1.0	6000	1.1	0.7	6000	5000	
	784.1	1.9	1.3	6000	1.3	0.8	6000	1.0	0.6	6000	5000	
	893.6	1.7	1.1	6000	1.1	0.7	6000	0.8	0.5	6000	5000	
963.5	1.6	1.0	6000	1.0	0.7	6000	0.8	0.5	6000	5000		
BPH 516	560.8	2.7	1.5	5310	1.8	1.0	5440	1.3	0.8	5670	5500	14
	637.7	2.4	1.3	5350	1.6	0.9	5540	1.2	0.7	5720	5500	
	725.0	2.1	1.3	5940	1.4	0.9	6130	1.0	0.7	6150	5800	
	824.3	1.8	1.1	5600	1.2	0.8	6160	0.9	0.6	6150	5800	
	939.5	1.6	1.0	6040	1.1	0.7	6160	0.8	0.5	6150	5800	
	1013.0	1.5	0.9	6070	1.0	0.6	6160	0.7	0.5	6160	5800	
	1154.6	1.3	0.8	6160	0.9	0.6	6160	0.6	0.4	6160	5800	
	1244.9	1.2	0.8	6160	0.8	0.5	6160	0.6	0.4	6160	5800	
	1387.8	1.1	0.7	6160	0.7	0.5	6150	0.5	0.3	6150	5800	
	1581.9	0.9	0.6	5720	0.6	0.4	5710	0.5	0.3	5710	5500	
	1798.6	0.8	0.5	6160	0.6	0.4	6160	0.4	0.3	6150	5800	
	2012.8	0.7	0.5	6160	0.5	0.3	6160	0.4	0.2	6160	5800	
	2252.5	0.7	0.4	6160	0.4	0.3	6160	0.3	0.2	6160	5800	
	2600.7	0.6	0.4	6150	0.4	0.2	6160	0.3	0.2	6170	5800	
	2910.4	0.5	0.3	6150	0.3	0.2	6150	0.3	0.2	6170	5800	
	3126.0	0.5	0.3	6150	0.3	0.2	6150	0.2	0.2	6170	5800	
	3498.2	0.4	0.3	6150	0.3	0.2	6160	0.2	0.1	6150	5800	
	3914.8	0.4	0.2	6150	0.3	0.2	6150	0.2	0.1	6170	5800	
	4468.4	0.3	0.2	6160	0.2	0.1	6170	0.2	0.1	6130	5800	
	5100.2	0.3	0.2	6170	0.2	0.1	6170	0.1	0.1	6140	5800	
6139.1	0.2	0.2	6280	0.2	0.1	6260	0.1	0.1	6280	5000		
7544.5	0.2	0.1	6270	0.1	0.1	6270	0.1	0.1	6270	5000		

Rapporti superiori sono possibili. Contattare il ns. Servizio Tecnico Commerciale per eventuali richieste

Higher ratios are available. Contact our Technical Service for possible questions

Höhere Übersetzungen sind möglich, Kontaktieren Sie unseren technischen Vertriebsservice für Ihre Anfragen

Rapports supérieurs possibles, contacter notre service technico-commercial pour toute information

Una relación superior es posible. Solicitar información a nuestro Servicio Técnico Comercial

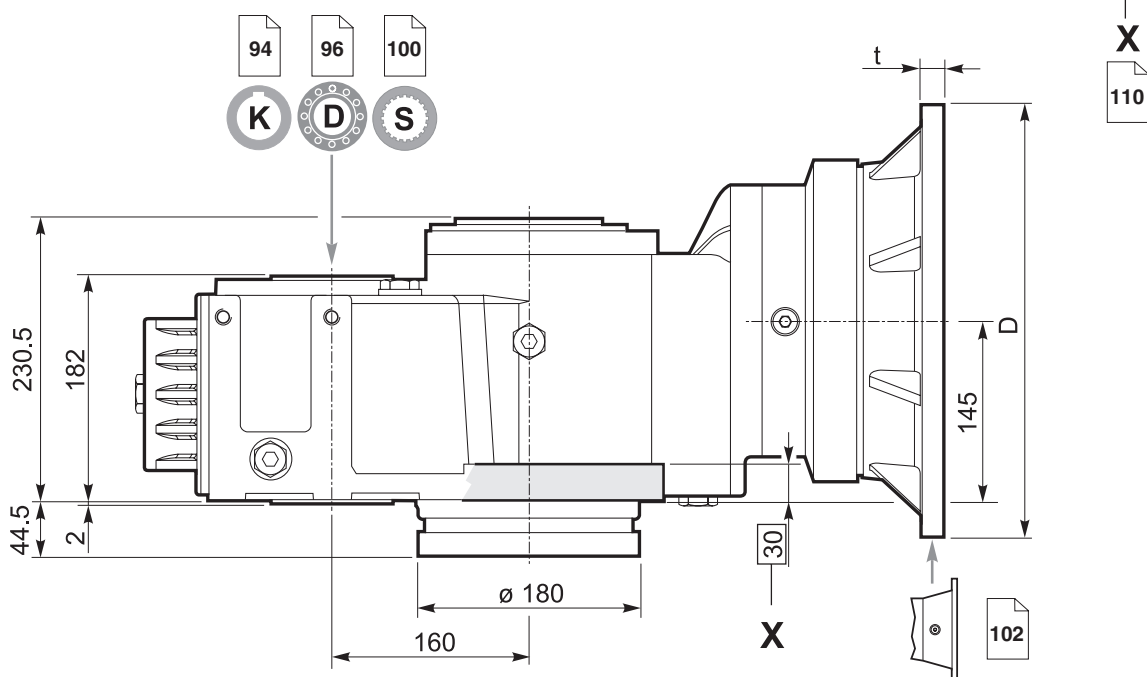
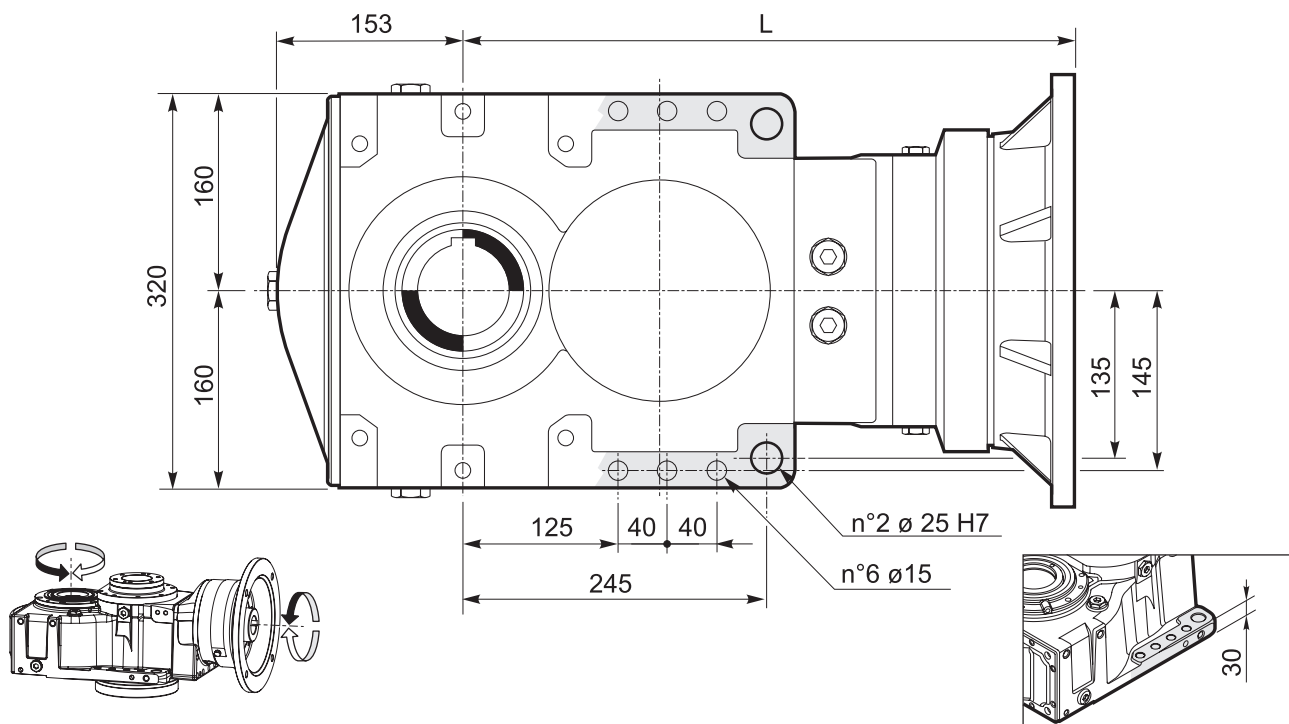
Relações superiores podem ser disponíveis. Entre em contato com o nosso Serviço Técnico Comercial para obter informações



BPH.16../IEC

Riduttori ad assi ortogonali

Bevel planetary helical gearboxes / Planeten-Kegelstirnradgetriebe / Réducteurs à arbres cylindro-côniques / Reductores con ejes perpendiculares / Redutores de eixos ortogonais



Predisposizioni IEC / IEC Adaptor / IEC-Motorlaterne Prédisposition IEC / Predisposición para el motor IEC / Adaptador IEC							
INPUT 00	71	80 - 90	100 - 112	132	160	180	
—	160	200	250	300	350	350	D
—	*	*	15	16	20	20	t
BPH 316	402	—	430	445	476.5	476.5	L
BPH 416	461	483	488	489	—	—	
BPH 516	521	543	548	549	—	—	

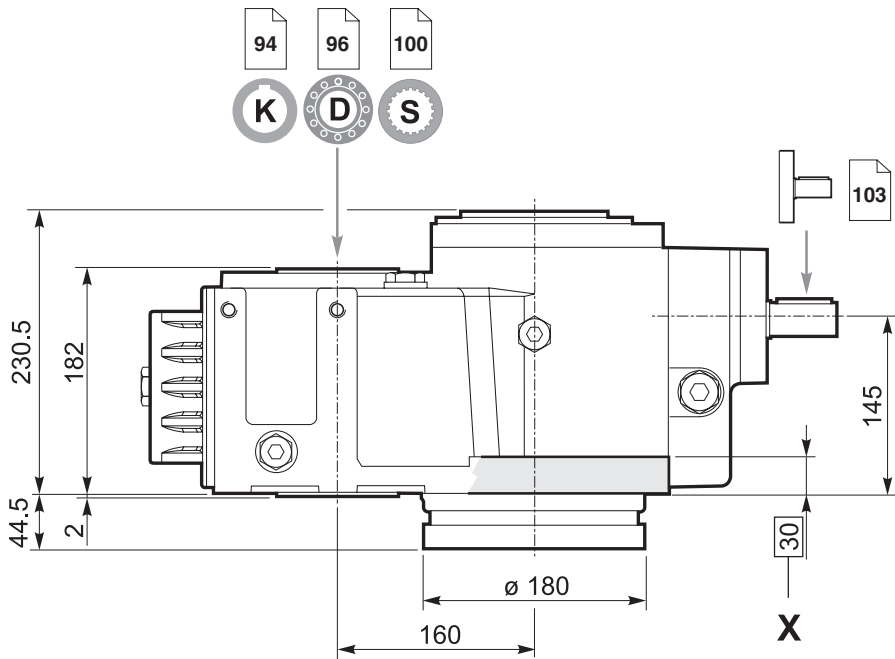
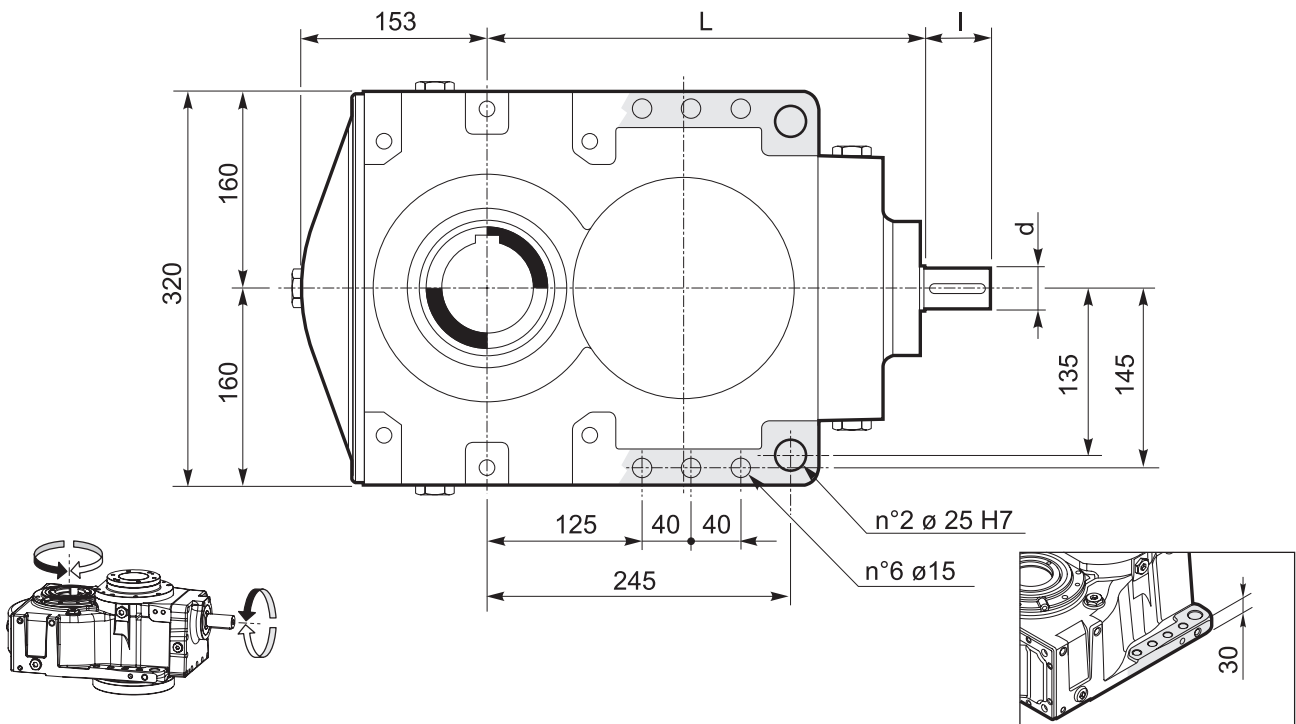
* Fori filettati nella flangia motore / Threaded holes on motor flange / Gewindebohrungen Motorlaterne
Trous filetés sur la lanterne moteur / Orificios roscados en la brida del motor / Furos rosqueados no flange do motor



Riduttori ad assi ortogonali

BPH.16../M

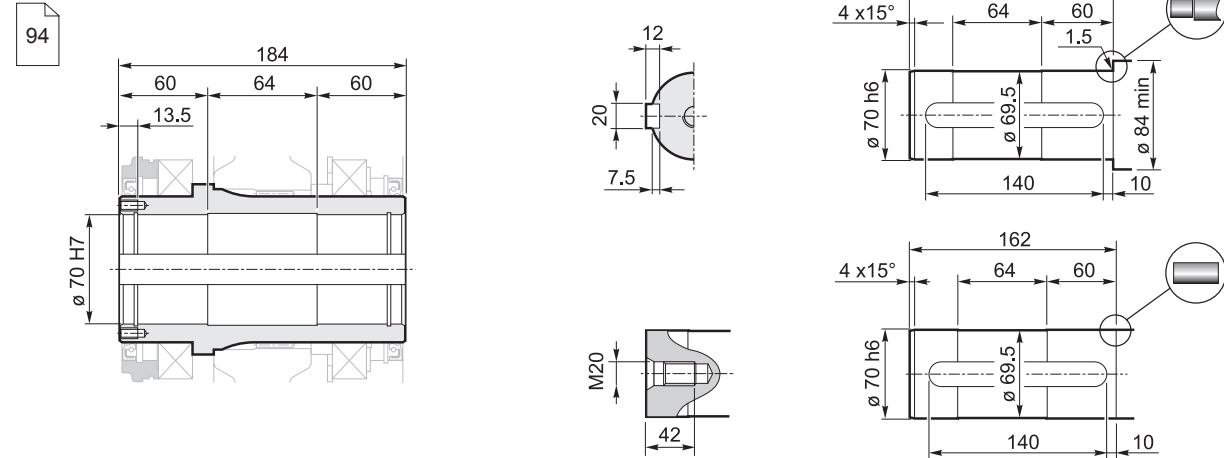
Bevel planetary helical gearboxes / Planeten-Kegelstirradgetriebe / Réducteurs à arbres cylindro-côniques / Reductores con ejes perpendiculares / Redutores de eixos ortogonais



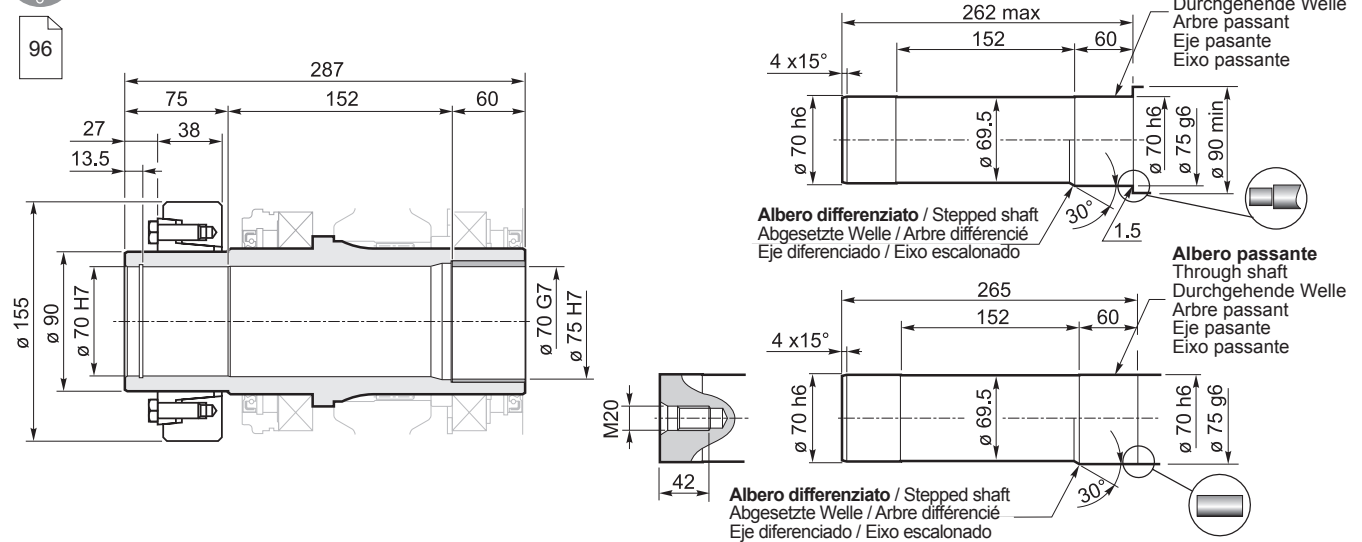
	L	I	d
BPH 316	360	60	35 j6
BPH 416	481	60	35 j6
BPH 516	541	60	35 j6



K **Albero cavo con cava per linguetta / Hollow shaft with keyway**
Hohlwelle mit Passfedernut / Arbre creux avec rainure de clavette
Eje hueco con chavetero / Eixo oco com rasgo para chaveta



D **Albero uscita cavo con calettatore / Hollow shaft for shrink disc**
Hohlwelle mit Schrumpfscheibe / Arbre sortie creux avec frette de serrage
Eje de salida hueco con disco de contracción / Eixo de saída oco com disco de contração



S **Albero uscita cavo scanalato / Splined hollow shaft**
Hohlwelle mit Vielkeilprofil / Arbre sortie creux rainuré
Eje de salida hueco acanalado / Eixo de saída oco estriado

