

Riduttori ad assi ortogonali

Bevel planetary helical gearboxes / Planeten-Kegelstirnradgetriebe / Réducteurs à arbres cylindro-cônes / Reductores con ejes perpendiculares / Redutores de eixos ortogonais

	i_{eff}	$n_1 = 1500 \text{ min}^{-1}$			$n_1 = 1000 \text{ min}^{-1}$			$n_1 = 750 \text{ min}^{-1}$			$T_{2\text{ISO}}$ [Nm]	P_T [kW]
		n_2 [min ⁻¹]	P_{N1} [kW]	T_{N2} [Nm]	n_2 [min ⁻¹]	P_{N1} [kW]	T_{N2} [Nm]	n_2 [min ⁻¹]	P_{N1} [kW]	T_{N2} [Nm]		
BPH 320	30.10	50	30.0	5560	33	22.6	6280	25	18.4	6840	10100	30
	34.20	44	30.0	6320	29	22.5	7130	22	18.4	7780	11000	
	35.52	42	30.0	6560	28	22.6	7410	21	18.4	8080	10100	
	40.37	37	30.0	7460	25	22.5	8420	19	18.4	9180	10100	
	47.63	31	27.0	7930	21	20.3	8960	15.7	15.8	9280	10100	
	61.91	24	19.0	7260	16	14.3	8200	12.1	11.7	8940	10100	
	70.36	21	19.0	8250	14	14.3	9320	10.7	11.6	10100	10100	
	83.02	18	17.9	9200	12	12.3	9430	9.0	9.4	9600	10100	
	103.9	14	12.0	7700	9.6	8.2	7900	7.2	6.3	8050	9000	
BPH 420	101.7	14.7	13.1	8050	9.8	9.8	9090	7.4	8.0	9910	10900	25
	115.6	13.0	13.1	9150	8.7	9.6	10090	6.5	7.3	10270	11000	
	120.1	12.5	13.1	9500	8.3	9.8	10730	6.2	7.9	11500	10100	
	136.4	11.0	13.0	10800	7.3	9.2	11500	5.5	6.9	11500	10100	
	155.9	9.6	10.9	10280	6.4	8.1	11500	4.8	6.1	11500	10100	
	177.2	8.5	10.7	11500	5.6	7.1	11500	4.2	5.3	11500	10100	
	205.2	7.3	9.0	11200	4.9	6.1	11500	3.7	4.6	11500	10100	
	213.1	7.0	8.9	11500	4.7	5.9	11500	3.5	4.4	11500	10100	
	242.2	6.2	7.8	11500	4.1	5.2	11500	3.1	3.9	11500	10100	
	280.1	5.4	6.8	11500	3.6	4.5	11500	2.7	3.4	11500	10100	
	308.9	4.9	6.1	11500	3.2	4.1	11500	2.4	3.1	11500	10100	
	371.5	4.0	5.1	11500	2.7	3.4	11500	2.0	2.5	11500	11000	
	422.1	3.6	4.5	11500	2.4	3.0	11500	1.8	2.2	11500	10100	
	488.3	3.1	3.9	11500	2.0	2.6	11500	1.5	1.9	11500	10100	
	576.2	2.6	3.3	11500	1.7	2.2	11500	1.3	1.6	11020	10100	
	650.1	2.3	2.9	11500	1.5	1.9	11500	1.2	1.5	11500	10100	
	738.7	2.0	2.6	11500	1.4	1.7	11500	1.0	1.3	11500	10100	
	871.7	1.7	2.0	10700	1.1	1.4	11500	0.9	1.1	11500	10100	
	1091.2	1.4	1.4	8970	0.9	0.9	9360	0.7	0.7	9770	9000	
BPH 520	461.2	3.3	4.2	12340	2.2	2.9	12650	1.6	2.2	12650	10100	23
	544.2	2.8	3.0	10240	1.8	2.0	10500	1.4	1.6	10750	10100	
	599.0	2.5	3.3	12550	1.7	2.2	12640	1.3	1.7	12650	10100	
	706.8	2.1	2.3	10410	1.4	1.6	10710	1.1	1.2	11190	10100	
	818.6	1.8	2.4	12650	1.2	1.6	12650	0.9	1.2	12650	10100	
	918.0	1.6	1.8	10570	1.1	1.3	11140	0.8	1.0	11640	10100	
	966.0	1.6	1.7	10610	1.0	1.2	11230	0.8	1.0	11740	10100	
	1063.3	1.4	1.9	12650	0.9	1.2	12650	0.7	0.9	12650	10100	
	1229.9	1.2	1.6	12650	0.8	1.1	12640	0.6	0.8	12650	10100	
	1453.2	1.0	1.4	12650	0.7	0.9	12640	0.5	0.7	12650	10100	
	1680.9	0.9	1.2	12640	0.6	0.8	12650	0.4	0.6	12650	10100	
	1860.7	0.8	1.1	12650	0.5	0.7	12640	0.4	0.5	12640	10100	
	1983.5	0.8	0.9	11780	0.5	0.7	12420	0.4	0.5	12420	10100	
	2195.7	0.7	0.9	11970	0.5	0.6	12420	0.3	0.4	12430	10100	
	2543.1	0.6	0.8	12650	0.4	0.5	12660	0.3	0.4	12650	10100	
	3000.9	0.5	0.6	12410	0.3	0.4	12410	0.2	0.3	12430	10100	
	3245.2	0.5	0.6	12650	0.3	0.4	12650	0.2	0.3	12650	10100	
	3459.2	0.4	0.6	12430	0.3	0.4	12430	0.2	0.3	12410	10100	
	4001.2	0.4	0.5	12420	0.2	0.3	12420	0.2	0.2	12420	10100	
	5130.2	0.3	0.4	12660	0.2	0.3	12640	0.1	0.2	12660	10100	
	6053.7	0.2	0.3	12420	0.2	0.2	12400	0.1	0.2	12460	10100	

Rapporti superiori sono possibili. Contattare il ns. Servizio Tecnico Commerciale per eventuali richieste

Higher ratios are available. Contact our Technical Service for possible questions

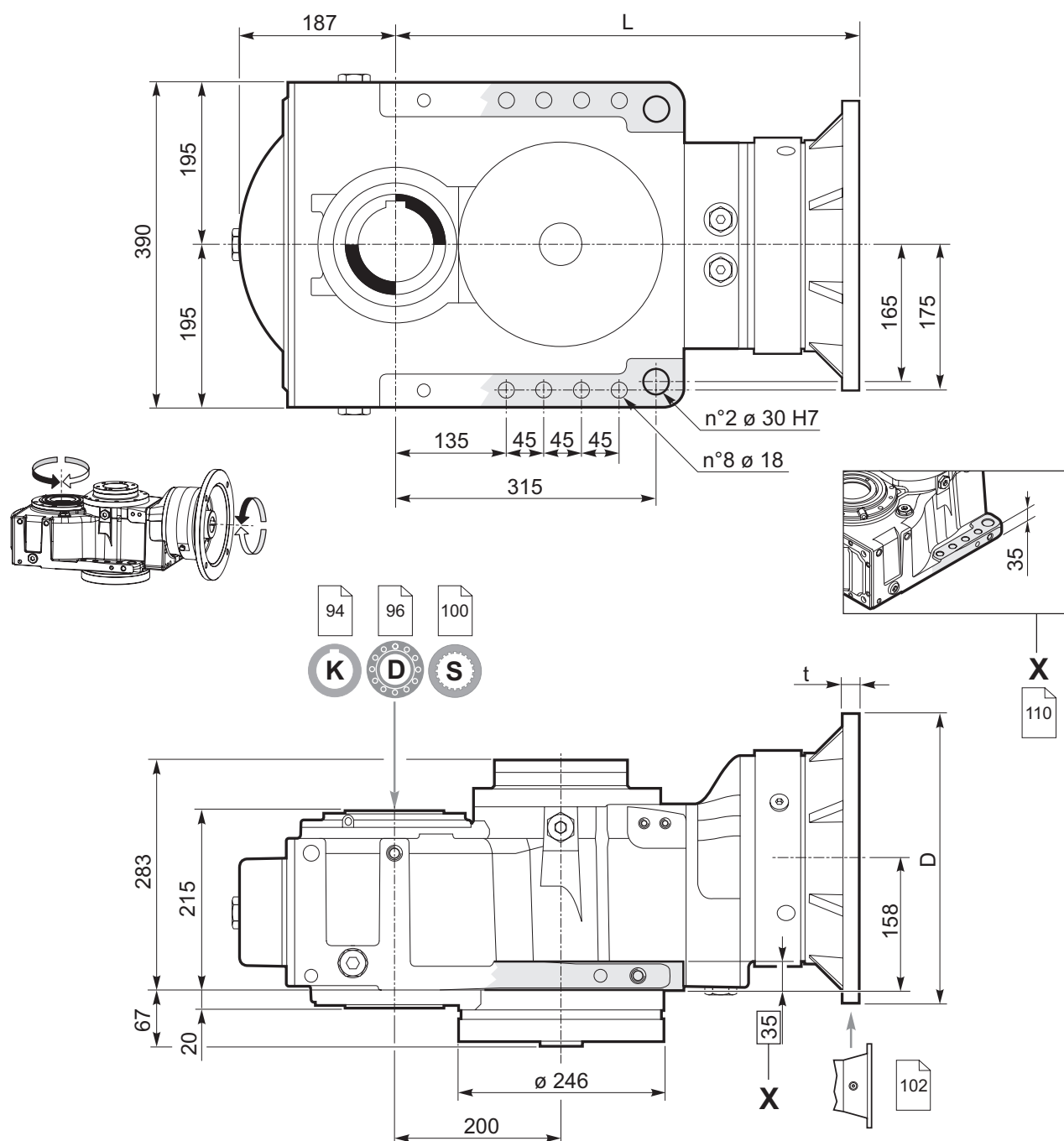
Höhere Übersetzungen sind möglich, Kontaktieren Sie unseren technischen Vertriebsservice für Ihre Anfragen

Rapports supérieurs possibles, contactez notre service technico-commercial pour toute information

Una relación superior es posible. Solicitar información a nuestro Servicio Técnico Comercial

Relações superiores podem ser disponíveis. Entre em contato com o nosso Serviço Técnico Comercial para obter informações





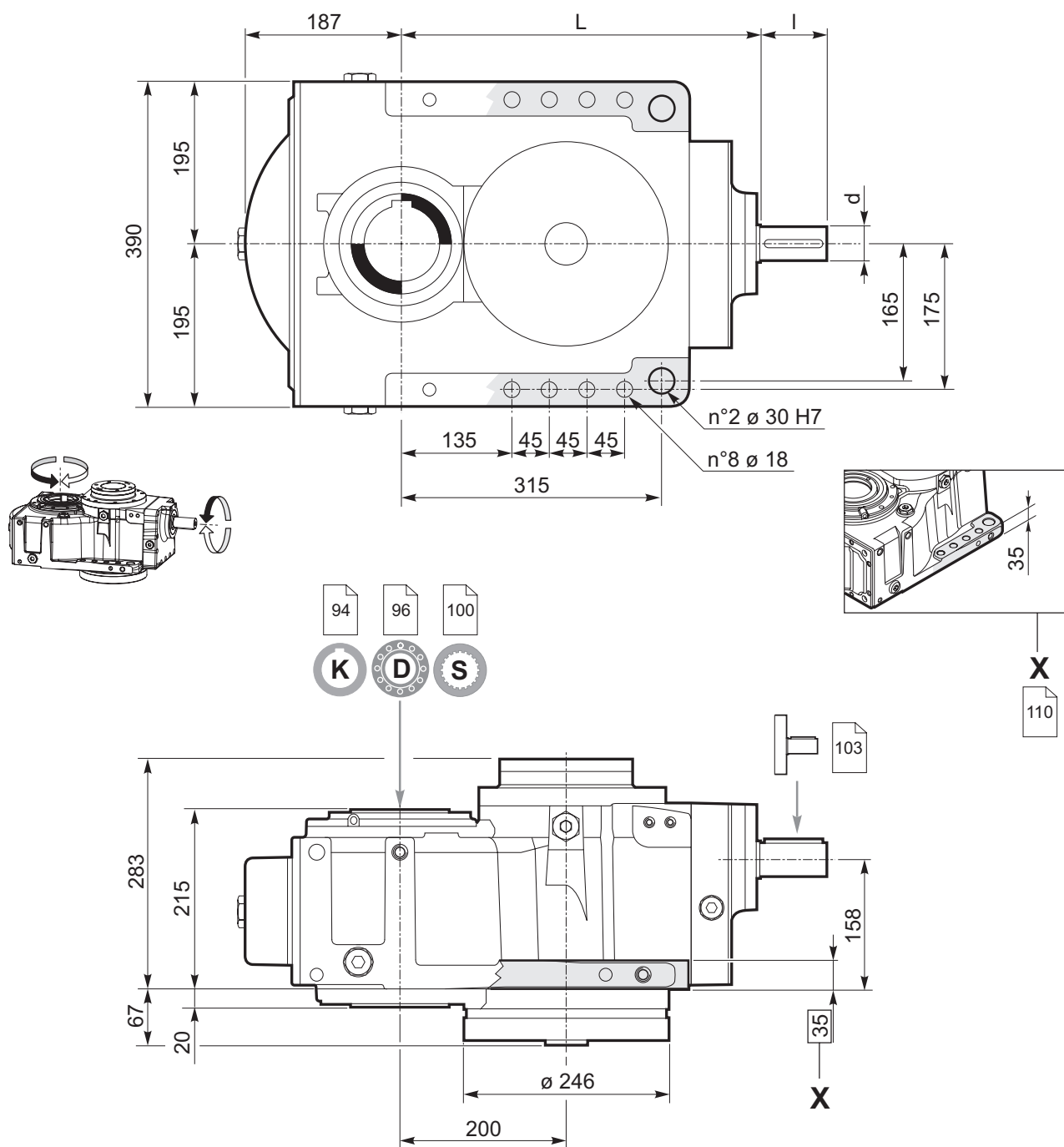
Predisposizioni IEC / IEC Adaptor / IEC-Motorlaterne Prédisposition IEC / Predisposición para el motor IEC / Adaptador IEC									
INPUT 00	71	80 - 90	100 - 112	132	160	180	200	225	
—	160	200	250	300	350	350	400	450	D
—	*	*	15	16	20	20	20	22	t
BPH 320	478.5	—	—	—	573.5	593	593	623	L
BPH 420	500.5	—	527.5	528.5	598.5	593	593	—	
BPH 520	540.5	562.5	567.5	568.5	638.5	—	—	—	

* Fori filettati nella flangia motore / Threaded holes on motor flange / Gewindebohrungen Motorlaterne
Trous filetés sur la lanterne moteur / Orificios roscados en la brida del motor / Furos rosqueados no flange do motor

Riduttori ad assi ortogonali

BPH.20../M

Bevel planetary helical gearboxes / Planeten-Kegelstirnradgetriebe / Réducteurs à arbres cylindro-côniques / Reductores con ejes perpendiculares / Redutores de eixos ortogonais

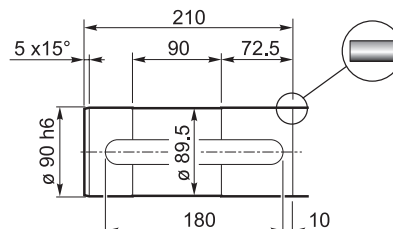
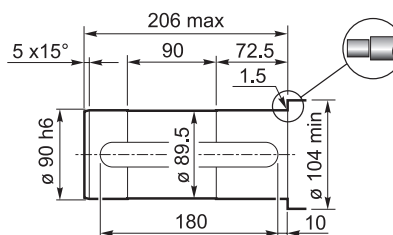
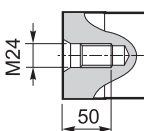
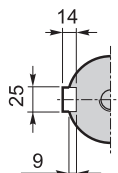
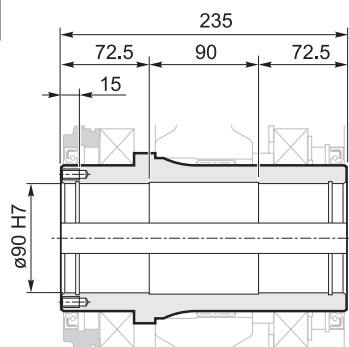


	L	I	d
BPH 320	434	80	38j6
BPH 420	536	60	35 j6
BPH 520	576	60	35 j6



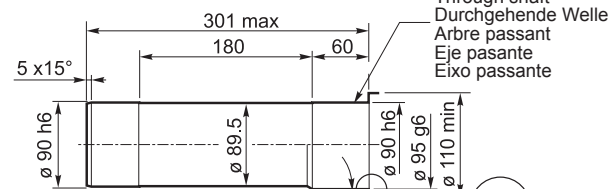
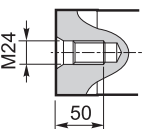
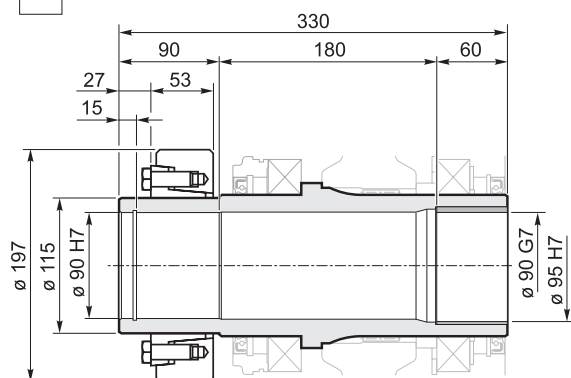
K Albero cavo con cava per linguetta / Hollow shaft with keyway Hohlwelle mit Passfedernut / Arbre creux avec rainure de clavette Eje hueco con chavetero / Eixo oco com rasgo para chaveta

94

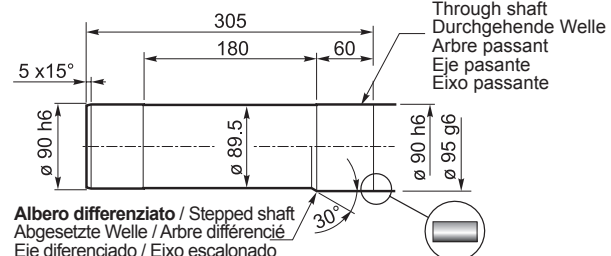


D Albero uscita cavo con calettatore / Hollow shaft for shrink disc Hohlwelle mit Schrumpfscheibe / Arbre sortie creux avec frette de serrage Eje de salida hueco con disco de contracción / Eixo de saída oco com disco de contração

96



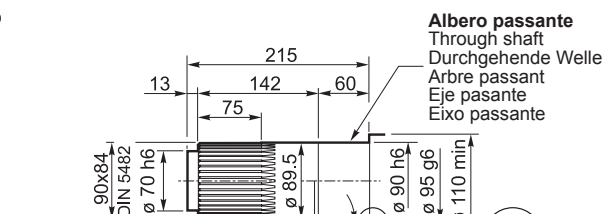
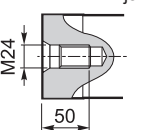
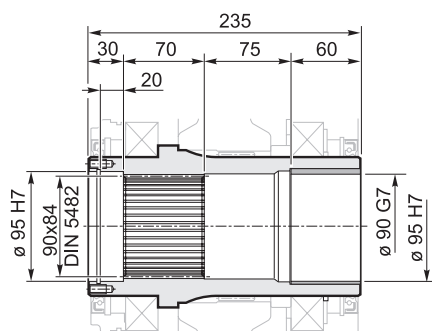
Albero differenziato / Stepped shaft
Abgesetzte Welle / Arbre différencié
Eje diferenciado / Eixo escalonado



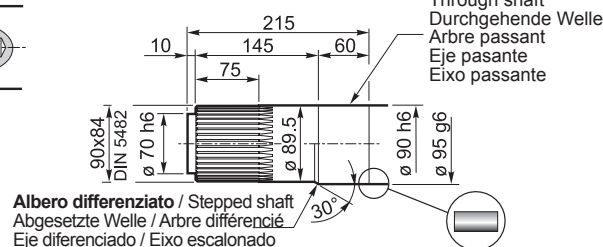
Albero differenziato / Stepped shaft
Abgesetzte Welle / Arbre différencié
Eje diferenciado / Eixo escalonado

S Albero uscita cavo scanalato / Splined hollow shaft Hohlwelle mit Vielkeilprofil / Arbre sortie creux rainuré Eje de salida hueco acanalado / Eixo de saída oco estriado

100



Albero differenziato / Stepped shaft
Abgesetzte Welle / Arbre différencié
Eje diferenciado / Eixo escalonado



Albero differenziato / Stepped shaft
Abgesetzte Welle / Arbre différencié
Eje diferenciado / Eixo escalonado