

## Riduttori ad assi ortogonali

Bevel planetary helical gearboxes / Planeten-Kegelstirnradgetriebe / Réducteurs à arbres cylindro-côniques / Reductores con ejes perpendiculares / Redutores de eixos ortogonais

	$n_1 = 1500 \text{ min}^{-1}$				$n_1 = 1000 \text{ min}^{-1}$			$n_1 = 750 \text{ min}^{-1}$			$T_{2ISO}$ [Nm]	$P_T$ [kW]
	$i_{eff}$	$n_2$ [ $\text{min}^{-1}$ ]	$P_{N1}$ [kW]	$T_{N2}$ [Nm]	$n_2$ [ $\text{min}^{-1}$ ]	$P_{N1}$ [kW]	$T_{N2}$ [Nm]	$n_2$ [ $\text{min}^{-1}$ ]	$P_{N1}$ [kW]	$T_{N2}$ [Nm]		
<b>BPH 323</b>	30.66	49	43.7	8240	33	32.9	9300	24	26.9	10140	14100	40
	35.67	42	43.7	9580	28	32.8	10820	21	26.8	11790	16400	
	40.55	37	43.6	10890	25	32.8	12300	18	26.8	13410	16700	
	42.10	36	43.6	11310	24	32.8	12770	18	26.8	13920	15100	
	47.86	31	42.2	12450	21	31.7	14060	16	25.6	15100	15100	
	54.55	27	38.5	12950	18	29.0	14620	13.7	22.4	15100	15100	
	58.82	26	36.5	13240	17	27.7	15100	12.8	20.8	15100	15100	
	73.37	20	27.3	12350	14	20.8	14140	10.2	16.7	15100	15100	
	83.42	18	27.3	14040	12.0	19.6	15100	9.0	14.7	15100	15100	
	95.08	16	25.7	15100	10.5	17.2	15100	7.9	12.9	15100	15100	
	102.5	15	23.9	15100	9.8	15.9	15100	7.3	11.9	15100	15100	
	123.2	12	14.2	10740	8.1	9.7	11010	6.1	7.4	11210	12400	
<b>BPH 423</b>	120.6	12.4	19.0	13950	8.3	13.8	15290	6.2	10.6	15570	16400	33
	137.1	10.9	18.9	15860	7.3	13.5	16990	5.5	10.3	17270	16700	
	142.3	10.5	18.9	16470	7.0	13.7	17890	5.3	10.3	18000	15100	
	161.8	9.3	17.3	17150	6.2	12.1	18000	4.6	9.1	18000	15100	
	184.4	8.1	15.3	17310	5.4	10.6	18000	4.1	8.0	18000	15100	
	210.1	7.1	13.9	17840	4.8	9.3	18000	3.6	7.0	18000	15100	
	239.5	6.3	12.0	17600	4.2	8.2	18000	3.1	6.1	18000	15100	
	252.6	5.9	11.6	18000	4.0	7.8	18000	3.0	5.8	18000	15100	
	287.2	5.2	10.2	18000	3.5	6.8	18000	2.6	5.1	18000	15100	
	332.2	4.5	8.9	18000	3.0	5.9	18000	2.3	4.4	18000	15100	
	366.2	4.1	8.0	18000	2.7	5.4	18000	2.0	4.0	18000	15100	
	417.4	3.6	7.0	18000	2.4	4.7	18000	1.8	3.5	18000	15100	
	500.5	3.0	5.9	18000	2.0	3.9	18000	1.5	2.9	18000	15100	
	578.9	2.6	5.1	18000	1.7	3.4	18000	1.3	2.5	18000	15100	
	659.9	2.3	4.5	18000	1.5	3.0	18000	1.1	2.2	18000	15100	
	770.4	1.9	3.8	18000	1.3	2.5	18000	1.0	1.9	18000	15100	
	875.9	1.7	3.4	18000	1.1	2.2	18000	0.9	1.7	18000	15100	
	998.3	1.5	2.9	18000	1.0	2.0	18000	0.8	1.5	18000	15100	
	1076.4	1.4	2.7	18000	0.9	1.8	18000	0.7	1.4	18000	15100	
<b>BPH 523</b>	624.6	2.4	4.7	18730	1.6	3.2	18920	1.2	2.4	18920	15100	31
	710.2	2.1	4.2	18920	1.4	2.8	18920	1.1	2.1	18920	15100	
	811.3	1.8	3.7	18920	1.2	2.4	18920	0.9	1.8	18920	15100	
	922.4	1.6	3.2	18920	1.1	2.1	18920	0.8	1.6	18920	15100	
	987.5	1.5	3.0	18920	1.0	2.0	18920	0.8	1.5	18920	15100	
	1108.8	1.4	2.7	18930	0.9	1.8	18920	0.7	1.3	18930	15100	
	1260.7	1.2	2.4	18920	0.8	1.6	18930	0.6	1.2	18920	15100	
	1415.0	1.1	2.1	18920	0.7	1.4	18920	0.5	1.1	18920	15100	
	1608.8	0.9	1.8	18920	0.6	1.2	18920	0.5	0.9	18920	15100	
	1722.2	0.9	1.7	18930	0.6	1.2	18920	0.4	0.9	18930	15100	
	1993.1	0.8	1.5	18930	0.5	1.0	18920	0.4	0.7	18920	15100	
	2236.9	0.7	1.3	18930	0.4	0.9	18920	0.3	0.7	18930	15100	
	2543.3	0.6	1.2	18920	0.4	0.8	18920	0.3	0.6	18920	15100	
	2643.1	0.6	1.1	18930	0.4	0.7	18920	0.3	0.6	18930	15100	
	3057.2	0.5	1.0	18920	0.3	0.6	18930	0.2	0.5	18920	15100	
	3476.0	0.4	0.9	18930	0.3	0.6	18920	0.2	0.4	18910	15100	
	3961.8	0.4	0.8	18930	0.3	0.5	18920	0.2	0.4	18930	15100	
	4625.4	0.3	0.6	18930	0.2	0.4	18920	0.2	0.3	18930	15100	
	6083.0	0.2	0.5	18930	0.2	0.3	18950	0.1	0.2	18930	15100	

Rapporti superiori sono possibili. Contattare il ns. Servizio Tecnico Commerciale per eventuali richieste

Higher ratios are available. Contact our Technical Service for possible questions

Höhere Übersetzungen sind möglich. Kontaktieren Sie unseren technischen Vertriebservice für Ihre Anfragen

Rapports supérieurs possibles, contacter notre service technico-commercial pour toute information

Una relación superior es posible. Solicitar información a nuestro Servicio Técnico Comercial

Relações superiores podem ser disponíveis. Entre em contato com o nosso Serviço Técnico Comercial para obter informações



## Riduttori ad assi ortogonali

Technical drawing of the KDS 100 motor, showing front, side, and detail views with dimensions and labels.

**Front View Dimensions:**

- Overall width: 212.5
- Overall height: 440
- Top flange width: 220
- Bottom flange width: 220
- Distance from center to mounting holes: 165
- Distance between mounting holes: 50, 50, 50
- Total distance between mounting holes: 365
- Mounting hole size:  $n^{\circ}2 \text{ } \varnothing 35 \text{ H7}$
- Mounting hole size:  $n^{\circ}8 \text{ } \varnothing 20$
- Flange thickness: 185
- Flange outer diameter: 198

**Side View Dimensions:**


- Overall width: 230
- Overall height: 330.5
- Top flange width: 257
- Bottom flange width: 84
- Distance from center to mounting holes: 37
- Distance between mounting holes:  $\varnothing 275$
- Flange thickness: 40
- Flange outer diameter: 180.5
- Flange outer diameter: D

**Detail View Dimensions:**

- Flange thickness: 40

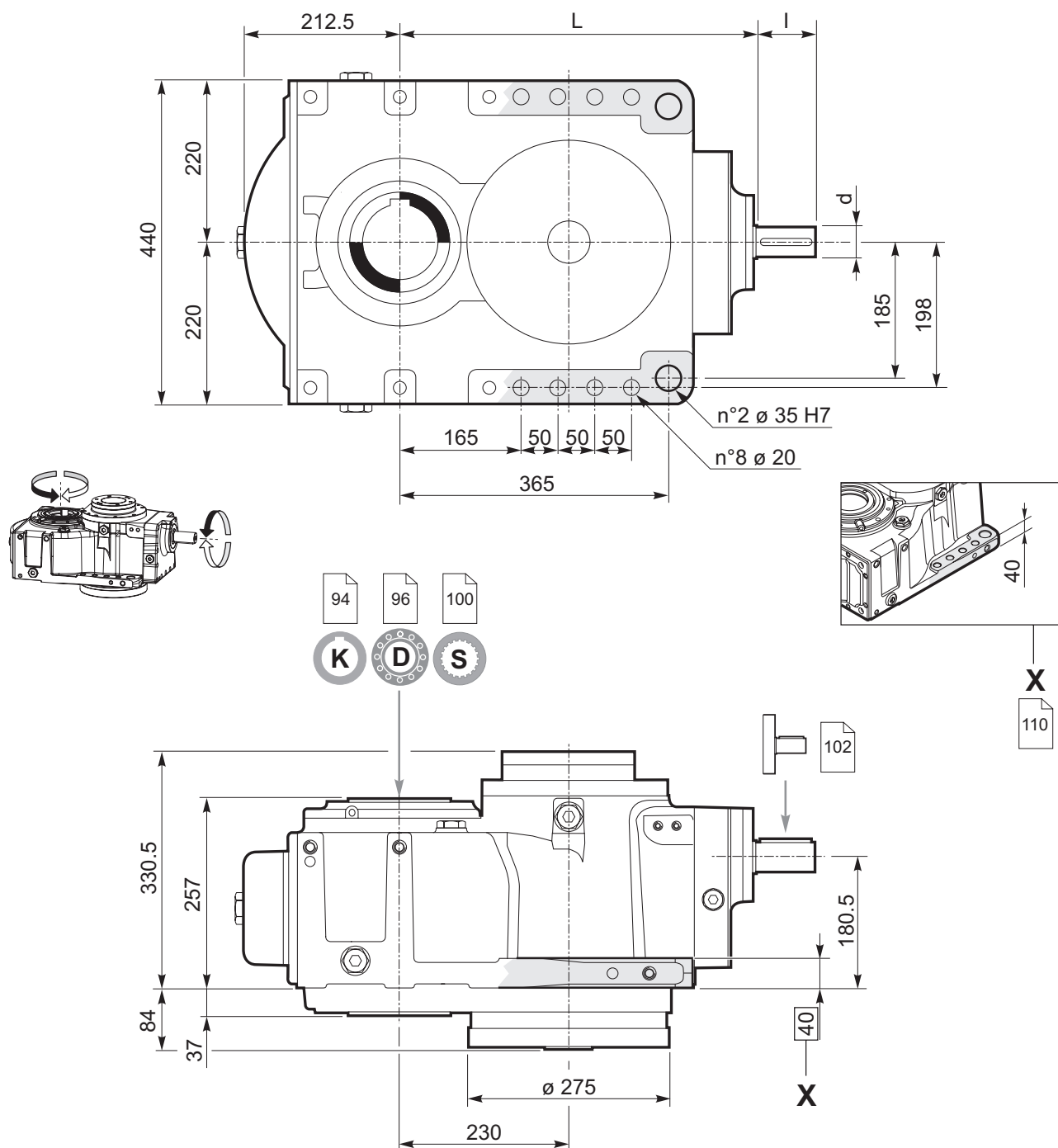
**Labels and Notes:**


- 94, 96, 100 (Top view labels)
- K, D, S (Top view labels)
- X (Side view label)
- 102 (Detail view label)
- 110 (Detail view label)

	Predisposizioni IEC / IEC Adaptor / IEC-Motorlaterne Prédisposition IEC / Predispoción para el motor IEC / Adaptador IEC									
	INPUT 00	71	80 - 90	100 - 112	132	160	180	200	225	
	—	160	200	250	300	350	350	400	450	<b>D</b>
	—	*	*	15	16	20	20	20	22	<b>t</b>
<b>BPH 323</b>	530.0	—	—	—	—	645	645	645	675	<b>L</b>
<b>BPH 423</b>	552.5	—	579.5	580.5	650.5	645	645	—	—	
<b>BPH 523</b>	592.5	614.5	619.5	620.5	690.5	—	—	—	—	

**BPH.23../M**

Bevel planetary helical gearboxes / Planeten-Kegelstirnradgetriebe / Réducteurs à arbres cylindro-cônes / Reductores con ejes perpendiculares / Redutores de eixos ortogonais

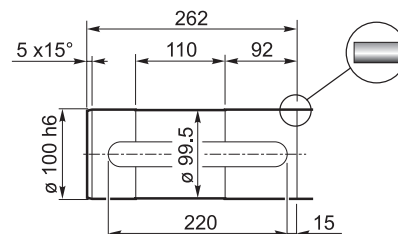
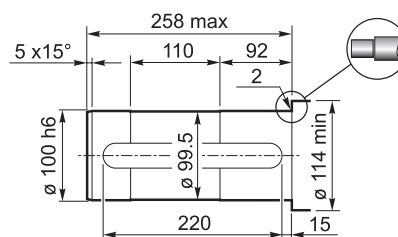
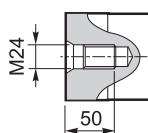
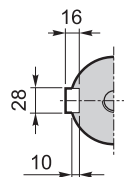
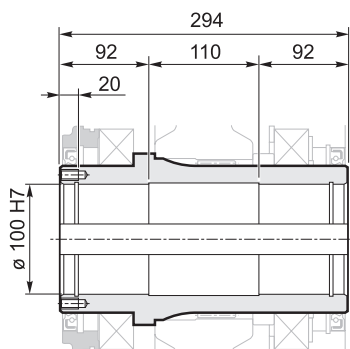


	<b>L</b>	<b>I</b>	<b>d</b>
<b>BPH 323</b>	484	80	42 J6
<b>BPH 423</b>	588.5	60	35 j6
<b>BPH 523</b>	628.5	60	35 j6

**K**

**Albero cavo con cava per linguetta / Hollow shaft with keyway**  
**Hohlwelle mit Passfedernut / Arbre creux avec rainure de clavette**  
**Eje hueco con chavetero / Eixo oco com rasgo para chaveta**

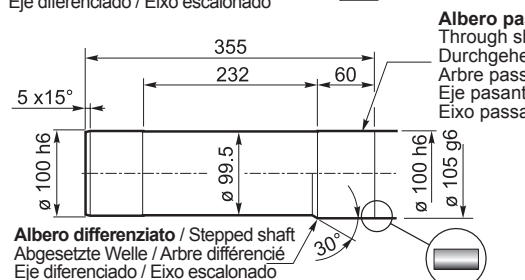
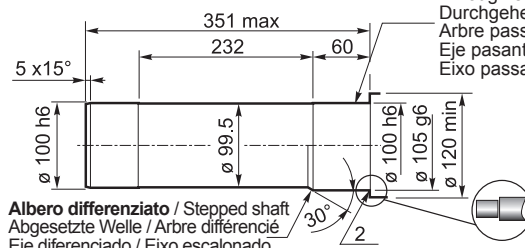
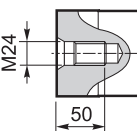
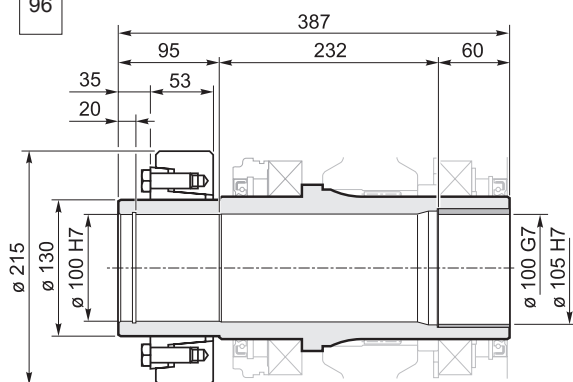
94



**D**

**Albero uscita cavo con calettatore / Hollow shaft for shrink disc**  
**Hohlwelle mit Schrumpfscheibe / Arbre sortie creux avec frette de serrage**  
**Eje de salida hueco con disco de contracción / Eixo de saída oco com disco de contração**

96



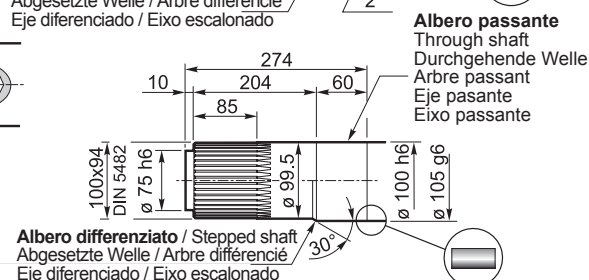
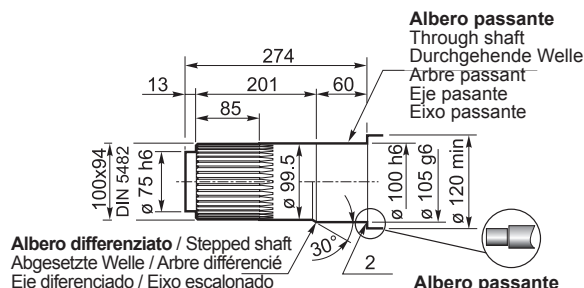
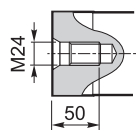
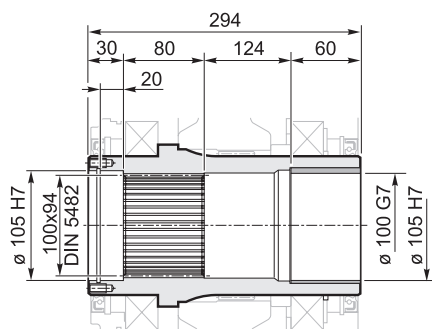
**Albero passante**  
 Through shaft  
 Durchgehende Welle  
 Arbre passant  
 Eje pasante  
 Eixo passante

**Albero passante**  
 Through shaft  
 Durchgehende Welle  
 Arbre passant  
 Eje pasante  
 Eixo passante

**S**

**Albero uscita cavo scanalato / Splined hollow shaft**  
**Hohlwelle mit Vielkeilprofil / Arbre sortie creux rainuré**  
**Eje de salida hueco acanalado / Eixo de saída oco estriado**

100



**Albero passante**  
 Through shaft  
 Durchgehende Welle  
 Arbre passant  
 Eje pasante  
 Eixo passante

**Albero passante**  
 Through shaft  
 Durchgehende Welle  
 Arbre passant  
 Eje pasante  
 Eixo passante