

BS.5... SINGLE STATION SUBPLATE

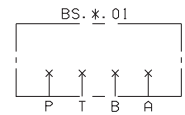


CETOP 5 SUBPLATES

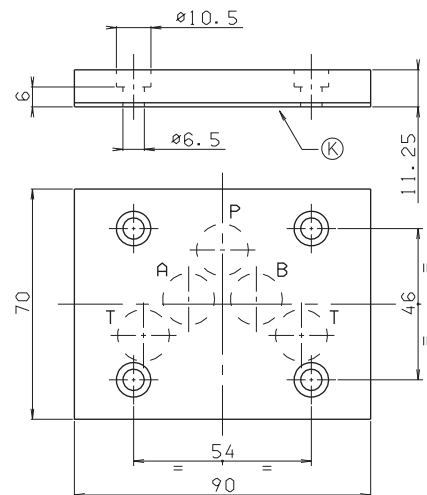
BS.5.01 / BS.5.0*	CH. VII PAGE 19
BS.5.12... / BS.5.13...	
BS.5.14... / BS.5.15...	CH. VII PAGE 20
BS.5.16... / BS.5.17...	
BS.5.3...	CH. VII PAGE 21
BS.5.30/31...	CH. VII PAGE 22
BS.VMP20... / BS.5.29...	CH. VII PAGE 23
BC.5.36/28...	CH. VII PAGE 24
BC.5.41/*... / BC.5.40...	CH. VII PAGE 25
BC.5.30/32... / BC.5.50... / BC.5.51...	CH. VII PAGE 26
BC.5.07... / BC.5.107...	
BC.5.3A... / BC.10.06...	CH. VII PAGE 27
BM.5.**... / BM.5.50...	CH. VII PAGE 28
BM.5.60... / BM.5.70...	
BM.5.80...	CH. VII PAGE 29
CMP.20...	BFP CARTRIDGE CATALOGUE
CMP.30...	BFP CARTRIDGE CATALOGUE

BS.5.01...

- BS** Single subplate (blanking)
- 5** CETOP 5/NG10
- 01** P/T/A/B closed
- 00** No variant
- 1** Serial No.



• Pay attention please, use these subplate in applications at slow pressure (P max. 150 bar dynamic)

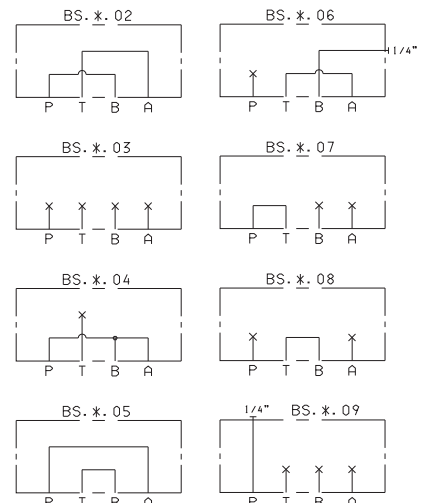
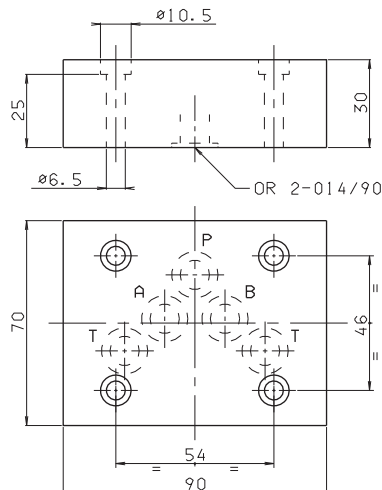


Weight: 0,5 Kg

Fixing screws
M6x15 UNI 5931
K = plate OR (Q25.95.0002)

BS.5.**...

- BS** Single subplate (blanking)
- 5** CETOP 5/NG10
- **** 02/03/04/05/06/07/08/09
- 00** No variant
- 1** Serial No.



Weight: 1,2 Kg

Fixing screws M6x35 UNI 5931