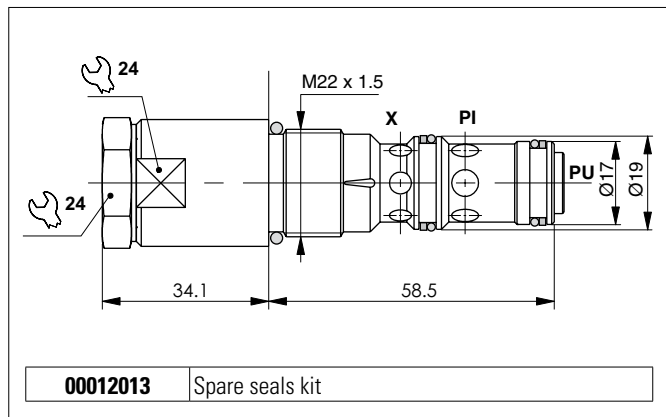


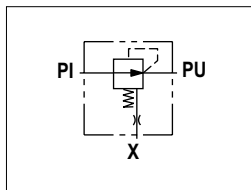
TWO-WAY PRESSURE COMPENSATOR VALVE



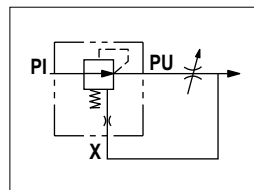
Pressure compensator type CCP maintains a constant pressure drop (Δp) regardless of downstream and up stream set pressure variation.

- Connecting a choke regulator between Pu port and Pil - piloting port - (see hydraulic scheme) it is possible to get a load independent flow regulation.
- This kind of compensator, named "meter in" (check in entrance), is suitable for application on special manifold or in line mounting bodies.

HYDRAULIC SYMBOLS



SIMPLIFIED SCHEME

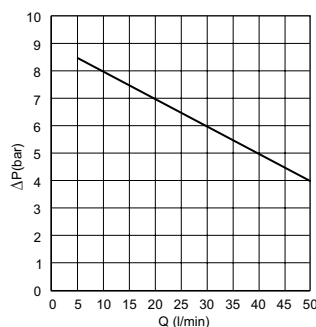


APPLICATION SCHEME

HYDRAULIC FEATURES

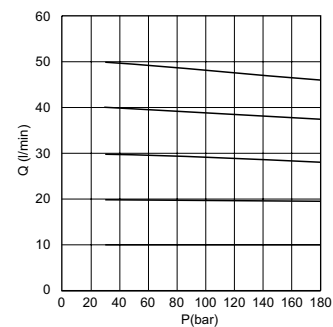
Max. opening pressure	250 bar
ΔP of regulation (standard)	8 bar
Max. Flow	50 l/min
Hydraulic fluid	DIN 51524 Mineral oils
Fluid viscosity	10 ÷ 500 mm ² /s
Fluid temperature	-25°C ÷ 75°C
Ambient temperature	-25°C ÷ 60°C
Max. contamin. level class with filter	ISO 4406:1999 - class 19/17/14
Weight	0.2 kg
Tightening torque	30 ÷ 40 Nm
Cavity (M22x1.5)	CN047002 (See section 15)

ΔP BETWEEN PU AND X - FLOW



Fluid used: mineral based oil with viscosity 46 mm²/s at 40°C.

PRESSURE - FLOW RATE



ORDERING CODE

