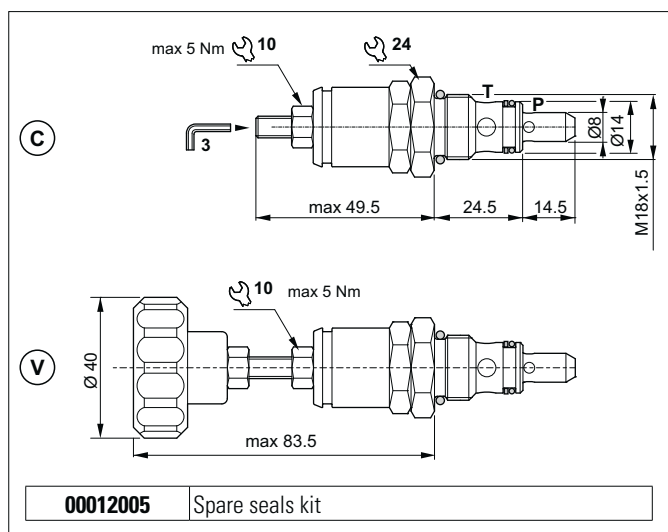

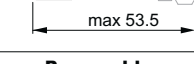


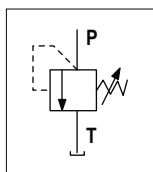
## DIRECT ACTING PRESSURE RELIEF VALVES (FOR POWER PACKS SERIES MC/MS)



## ACCESSORIES

Detachable plug	Code
<p data-bbox="209 981 316 992"><b>Unremovable version</b></p> 	<p data-bbox="467 1001 547 1014"><b>60309200</b></p>
<p data-bbox="209 1081 316 1095"><b>Removable version</b></p> 	<p data-bbox="467 1104 547 1115"><b>60309100</b></p>

## HYDRAULIC SYMBOL



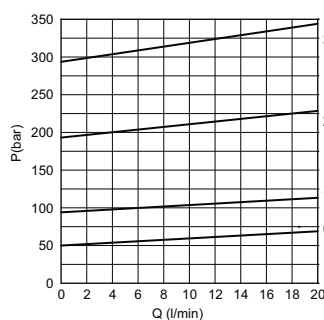
The direct acting relief valve limits the pressure in a hydraulic circuit. It raises the safety level by making it impossible for the plant operators to set a higher pressure rating, than that specified in the catalogue. It has a pack spring with a mechanical stop. It has a galvanised steel body. The guided ball poppet is in tempered and ground steel.

## HYDRAULIC FEATURES

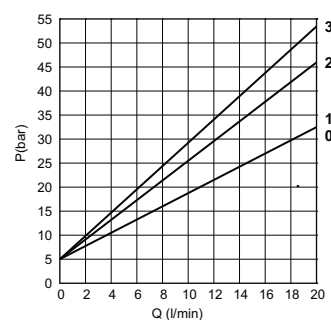
Max. opening pressure	290 bar
Setting range: Spring 0 Spring 1 Spring 2 Spring 3	max 50 bar max 90 bar max 190 bar max 290 bar
Max. Flow	20 l/min
Hydraulic fluid	DIN 51524 Mineral oils
Fluid viscosity	10 ÷ 500 mm <sup>2</sup> /s
Fluid temperature	-25°C ÷ 75°C
Ambient temperature	-25°C ÷ 60°C
Max. contamin. level class with filter	ISO 4406:1999 - class 19/17/14
Weight	0,12 kg
Tightening torque	28 ÷ 32 Nm
Cavity (M18x1.5)	CN041009 (See section 15)

The minimum permissible setting pressure depending on the spring: see curves below

### PRESSURE-FLOW RATE



### MIN.SETTING PRESSURE



**0** = 0 ÷ 50 bar - **1** = 35 ÷ 90 bar - **2** = 75 ÷ 190 bar - **3** = 160 ÷ 290 bar  
Fluid used: mineral based oil with viscosity 46 mm<sup>2</sup>/s at 40°C.

**ORDERING CODE**

Adjustment	Setting ranges	Code
<b>C</b> Screw	0 ÷ 50 bar	<b>21000016.000</b>
	35 ÷ 90 bar	<b>21000000.000</b>
	75 ÷ 190 bar	<b>21000001.000</b>
	160 ÷ 290 bar	<b>21000002.000</b>

Adjustment	Setting ranges	Code
<b>V</b> Handwheel	0 ÷ 50 bar	<b>21000017.000</b>
	35 ÷ 90 bar	<b>210000 03.000</b>
	75 ÷ 190 bar	<b>21000004.000</b>
	160 ÷ 290 bar	<b>21000005.000</b>