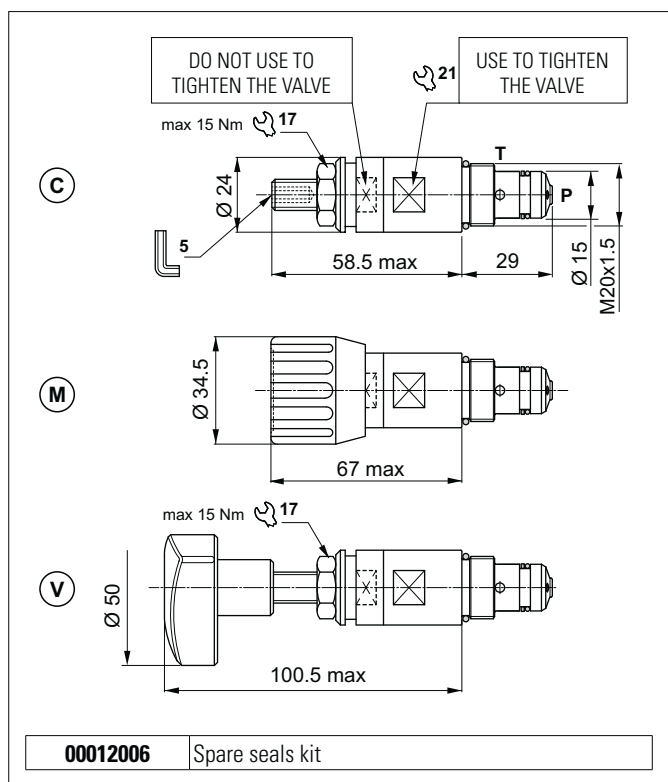


DIRECT ACTING PRESSURE RELIEF VALVES



The direct acting relief valve limits the pressure in a hydraulic circuit. It raises the safety level by making it impossible for the plant operators to set a higher pressure rating, than that specified in the catalogue. This is limited by a pack spring with a mechanical stop, which prevents temporary P closures caused by pressure peaks.

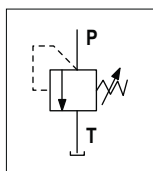
It has a galvanised steel body. The guided ball poppet is in tempered and ground steel.

HYDRAULIC FEATURES

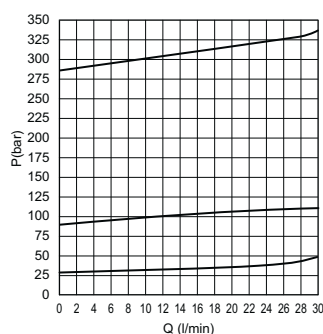
| | |
|--|--------------------------------|
| Max. opening pressure | 290 bar |
| Setting range: | |
| Spring 1 (white) | max 30 bar |
| Spring 2 (yellow) | max 90 bar |
| Spring 3 (green) | max 290 bar |
| Max. Flow | 30 l/min |
| Hydraulic fluid | DIN 51524 Mineral oils |
| Fluid viscosity | 10 ÷ 500 mm ² /s |
| Fluid temperature | -25°C ÷ 75°C |
| Ambient temperature | -25°C ÷ 60°C |
| Max. contamin. level class with filter | ISO 4406:1999 - class 19/17/14 |
| Weight | 0.17 kg |
| Tightening torque | 30 ÷ 35 Nm |
| Cavity (M20x1.5) | CN044001 (See section 15) |

The minimum permissible setting pressure depending on the spring: see curves below

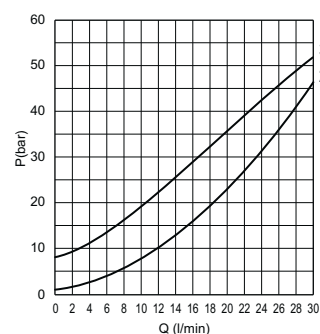
HYDRAULIC SYMBOL



PRESSURE-FLOW RATE



MIN.SETTING PRESSURE



1 = CMP06.1.. - 2 = CMP06.2.. - 3 = CMP06.3..

Fluid used: mineral based oil with viscosity 46 mm²/s at 40°C.

ORDERING CODE

