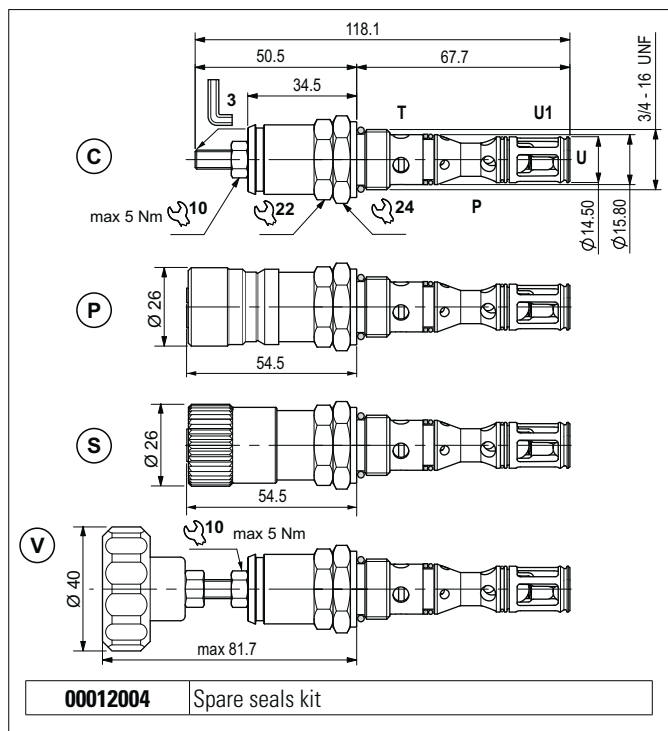


DIRECT ACTING HIGH PRESSURE RELIEF VALVES WITH ONE-WAY CHECK VALVE



The valve has a combined function in a single cartridge. It consists of a direct acting maximum pressure valve and a unidirectional check valve.

The relief valve raises the safety level by making it impossible for the plant operators to set a higher pressure rating, than that specified in the catalogue. It has a pack spring with a mechanical stop.

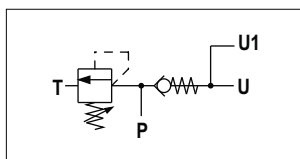
The spring in the check valve enables the cartridge to be mounted in any position.

It has a galvanised steel body. The tapered poppet of the relief valve and the guided ball poppet are made from tempered and ground steel.

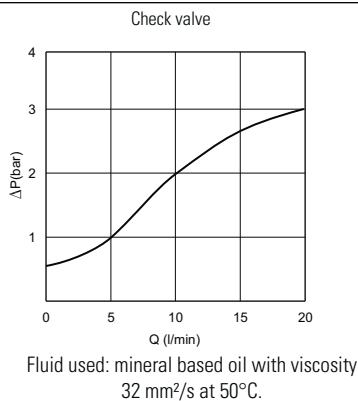
HYDRAULIC FEATURES

Max. opening pressure	360 bar
Max. Flow	15 l/min
Setting ranges (spring)	1 = > 320 ÷ 360 bar (blue)
One-way check	0.5 bar (standard)
Check valve leakage (0 ÷ 5 drops/min)	0 ÷ 0.25 cm ³ /min
Hydraulic fluid	DIN 51524 Mineral oils
Fluid viscosity	10 ÷ 500 mm ² /s
Fluid temperature	-25°C ÷ 75°C
Ambient temperature	-25°C ÷ 60°C
Max. contamin. level class with filter	ISO 4406:1999 - class 19/17/14
Weight	0.18 kg
Tightening torque	25 ÷ 30 Nm
Cavity (3/4 - 16 UNF)	CD018013 (See section 15)

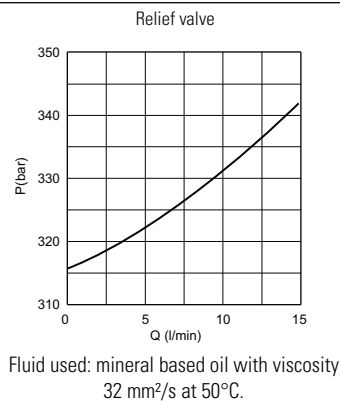
HYDRAULIC SYMBOL



PRESSURE DROPS (P → U)



PRESSURE - FLOW (P → T)



ORDERING CODE

CMPH	R	04	*	*	1	00	1	1 = Serial No.
CMPH = High pressure relief valve	Series					Variants		
R = With check valve								
04 = 3/4 - 16 UNF		Size						
C = Screw						Setting ranges		
P = C + Plug no detachable closing (unremovable version)								
S = C + Plug detachable closing								
V = Handwheel								
								00 = No variants
								1 = > 320 ÷ 360 bar (blue spring)
								0 = With standard check-valve
								S = Without standard check-valve