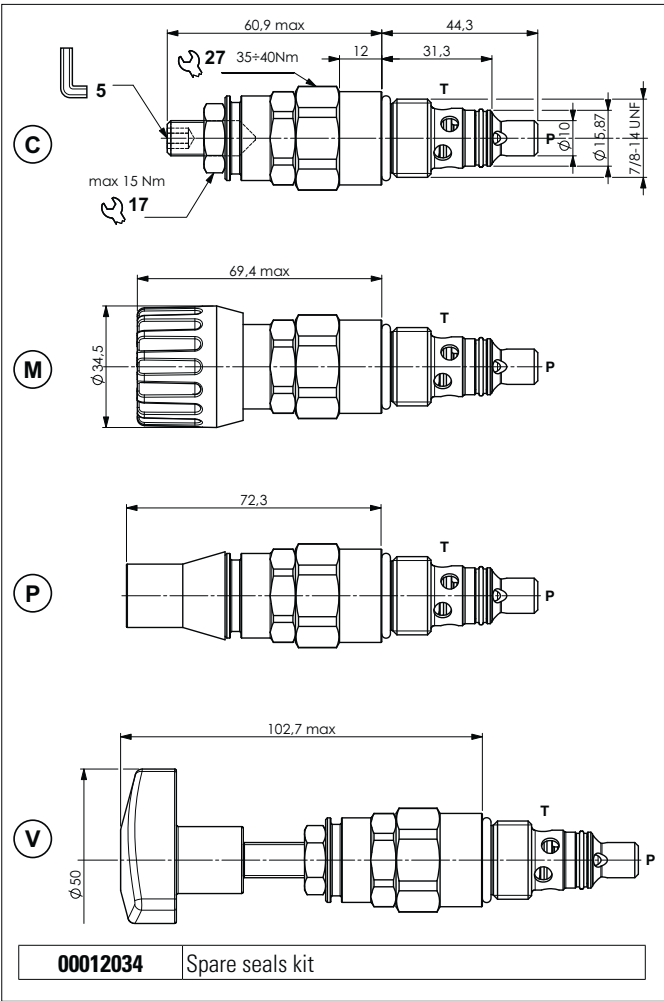
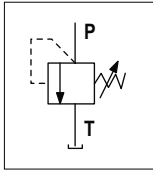


DIRECT ACTING PRESSURE RELIEF VALVES



HYDRAULIC SYMBOL



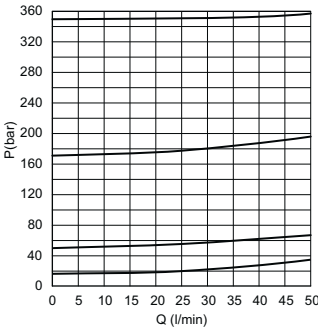
The direct acting relief valve limits the pressure in a hydraulic circuit. It raises the safety level by making it impossible for the plant operators to set a higher pressure rating, than that specified in the catalogue. This is limited by a pack spring with a mechanical stop. It has a galvanised steel body. The guided ball poppet is in tempered and ground steel.

HYDRAULIC FEATURES

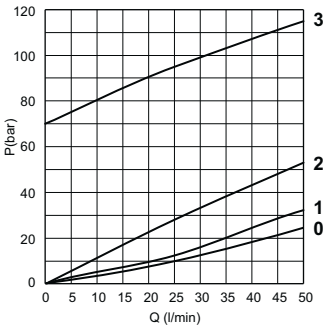
Max. opening pressure	350 bar
Setting range:	
Spring 1 (orange)	max 15 bar
Spring 1 (white)	max 50 bar
Spring 2 (yellow)	max 170 bar
Spring 3 (green)	max 350 bar
Max. Flow	50 l/min
Hydraulic fluid	DIN 51524 Mineral oils
Fluid viscosity	10 ÷ 500 mm ² /s
Fluid temperature	-25°C ÷ 75°C
Ambient temperature	-25°C ÷ 60°C
Max. contamin. level class with filter	ISO 4406:1999 - class 19/17/14
Weight	0.22 kg
Tightening torque	35 ÷ 40 Nm
Cavity (7/8 - 14 UNF)	CD019011 (See section 15)

The minimum permissible setting pressure depending on the spring: see curves below

PRESSURE-FLOW RATE



MIN. SETTING PRESSURE



0 = CP06.0.. - 1 = CP06.1.. - 2 = CP06.2.. - 3 = CP06.3..

Fluid used: mineral based oil with viscosity 46 mm²/s at 40°C.

ORDERING CODE

CP	06	*	*	**	1
CP = Pressure relief valve	Series	06 = 7/8 - 14 UNF	Size	Adjustment	1 = Serial No.
06 = 7/8 - 14 UNF				00 = No variants	V1 = Viton
C = Screw				0 = Max 15 bar (orange spring)	
M = Plastic knob				1 = Max 50 bar (white spring)	
P = C + Sealed cap				2 = Max 170 bar (yellow spring)	
V = Handwheel				3 = Max 350 bar (neutral spring)	