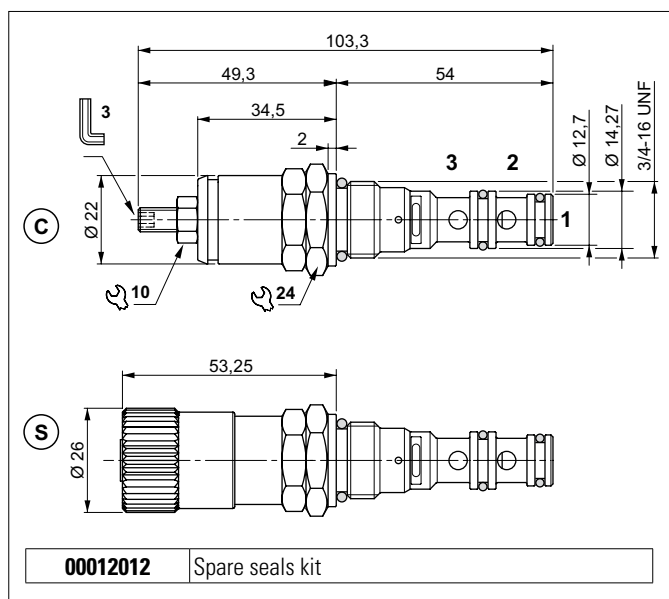
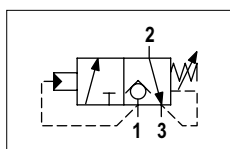


## SEQUENCE VALVES - DIRECTLY OPERATED (FOR MK3 SERIES POWER PACKS)



### HYDRAULIC SYMBOL



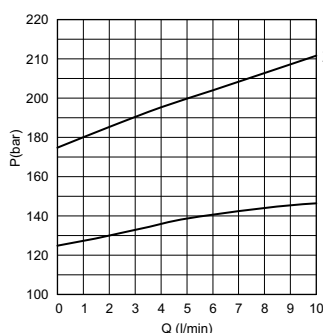
3 way direct acting sequence valve feeds with 1 → 2 flow, a secondary branch of a circuit when a set pressure value is reached. While the port 3 is normally connected to tank. When the port 1 is at a lower pressure than the setting pressure, the ports 2 and 3 are connected to tank. Back pressure on port 3 adds to the valve setting. Back pressure on port 2 does not effect the valve setting when there is flow from port 1 to 2. It raises the safety level by making it impossible for the plant operators to set a higher pressure rating, than that specified in the catalogue. It has a pack spring with a mechanical stop (only standard screw and nut). The body is made of steel with nitrocarburizing treatment while the spool is made of tempered and ground steel.

### HYDRAULIC FEATURES

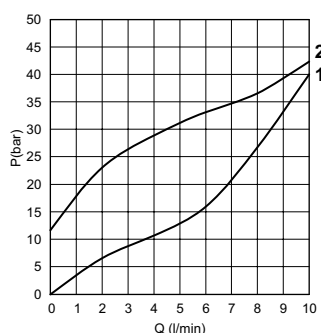
Max. pressure	210 bar
Setting range:	
Spring 1 (neutral)	max 125 bar
Spring 2 (red)	max 175 bar
Max. Flow	10 l/min
Leakage at 70% of the spring calibration (flow 1 l/min)	
Spring 1: 0 ÷ 30 drops/min	Spring 1: 0 ÷ 1.5 cm <sup>3</sup> /min
Spring 2: 0 ÷ 60 drops/min	Spring 2: 0 ÷ 3 cm <sup>3</sup> /min
Hydraulic fluid	DIN 51524 Mineral oils
Fluid viscosity	10 ÷ 500 mm <sup>2</sup> /s
Fluid temperature	-25°C ÷ 75°C
Ambient temperature	-25°C ÷ 60°C
Max. contamin. level class with filter	ISO 4406:1999 - class 19/17/14
Weight	CSMK04C... : 0.145 kg CSMK04S... : 0.152 kg
Tightening torque	25 ÷ 30 Nm
Cavity (3/4 - 16 UNF)	CD018001 (See section 15)

The minimum permissible setting pressure depending on the spring: see curves.

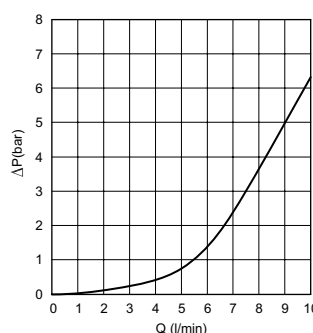
### PRESSURE-FLOW RATE (1 → 2)



### MIN.SETTING PRESSURE (1 → 2)



### PRESSURE DROPS (2 → 3)



**1** = CSMK04.1..  
**2** = CSMK04.2..

Fluid used: mineral based oil with viscosity 46 mm<sup>2</sup>/s at 40°C.

### ORDERING CODE

<b>CSMK</b> = Sequence valve	Series	<b>04</b>	Size	<b>*</b>	Adjustment	<b>*</b>	Setting ranges	<b>00</b>	Variants	<b>1</b>	Serial No.
<b>04</b> = 3/4 - 16 UNF										<b>00</b>	No variants
<b>C</b> = With screw <b>S</b> = With removable cap lock										<b>1</b>	max 125 bar (neutral spring)
										<b>2</b>	max 175 bar (red spring)