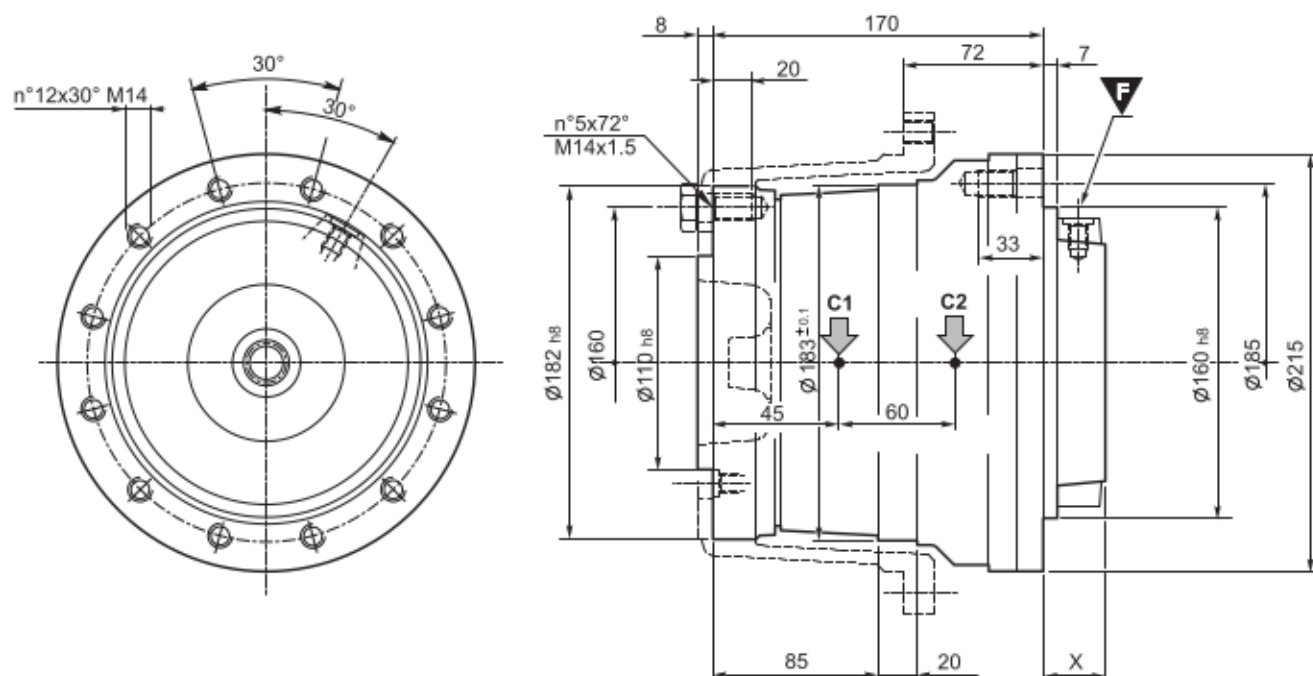


CTD1020



Dati tecnici / Specifications / Technische Daten Caractéristiques techniques / Datos técnicos / Características técnicas

Tipo / Type / Typ / Type / Tipo / Tipo	T _{2 max} [Nm]	n _{1 max} [rpm]	C1 = C2 [kN]	i = (* non disinseribile / no disengage / nicht ausschaltbar / non décrabotables / sin embrague / não desengatáveis)			
CTD1020	2.200	1.000	44	6	M10 x 1	32	0,5

Freno Lamellare / Multidisc Brake / Lamellenbremse / Frein à lamelles / Freno de láminas / Freio lamelar

Pa [bar]	Pmax [bar]	Tf max [Nm]
12	210	420

Type	Connection	X	Y	Type	Connection	X	Y
Danfoss OMP - OMR	CF Integrated	58	-				
Danfoss OMSS	CF Integrated	32	-				
Samhydraulik AR	CF Integrated	58	-				
Samhydraulik AR	SF Integrated	58	-				
Samhydraulik BR	CF Integrated	58	-				