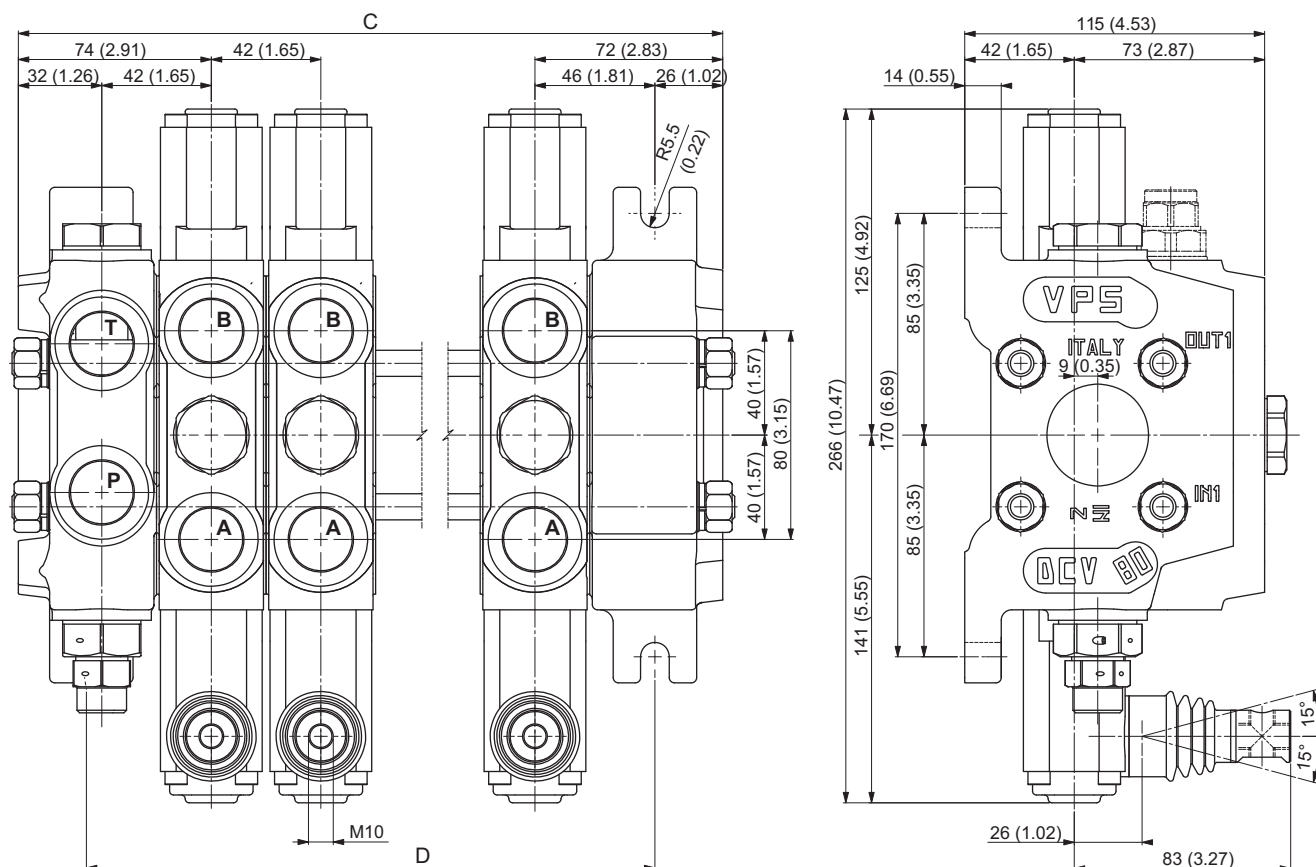


DISTRIBUTORE Componibile
MODULAR VALVE
MODELLO
MODEL
DCV 80

PORTATA
FLOW

120 l/min
31.7 GPM

PRESSIONE MAX
MAX PRESSURE

350 BAR
5075 PSI

Coppia di serraggio dei tiranti
Tie-rod tightening torque

55 Nm

(...) = inches

| DISTRIBUTORE TIPO TYPE OF VALVE | QUOTE VARIABILI - VARIABLE DIMENSIONS | | | | | |
|------------------------------------|---------------------------------------|-------|-----|-------|---------------|--------|
| | C | | D | | PESO - WEIGHT | |
| | mm | inc | mm | inc | kg | lb |
| DCV 80/1 | 144 | 5.67 | 92 | 3.62 | 9.80 | 21.56 |
| DCV 80/2 | 186 | 7.32 | 134 | 5.28 | 13.70 | 30.14 |
| DCV 80/3 | 228 | 8.98 | 176 | 6.93 | 17.60 | 38.72 |
| DCV 80/4 | 270 | 10.63 | 218 | 8.58 | 21.50 | 47.30 |
| DCV 80/5 | 312 | 12.28 | 260 | 10.24 | 25.40 | 55.88 |
| DCV 80/6 | 354 | 13.94 | 302 | 11.89 | 29.30 | 64.46 |
| DCV 80/7 | 396 | 15.59 | 344 | 13.54 | 32.20 | 70.84 |
| DCV 80/8 | 438 | 17.24 | 386 | 15.20 | 37.10 | 81.62 |
| DCV 80/9 | 480 | 18.90 | 428 | 16.85 | 41.00 | 90.20 |
| DCV 80/10 | 522 | 20.55 | 470 | 18.50 | 44.90 | 98.78 |
| DCV 80/11 | 564 | 22.20 | 512 | 20.16 | 48.80 | 107.36 |
| DCV 80/12 | 606 | 23.86 | 554 | 21.81 | 52.70 | 115.94 |