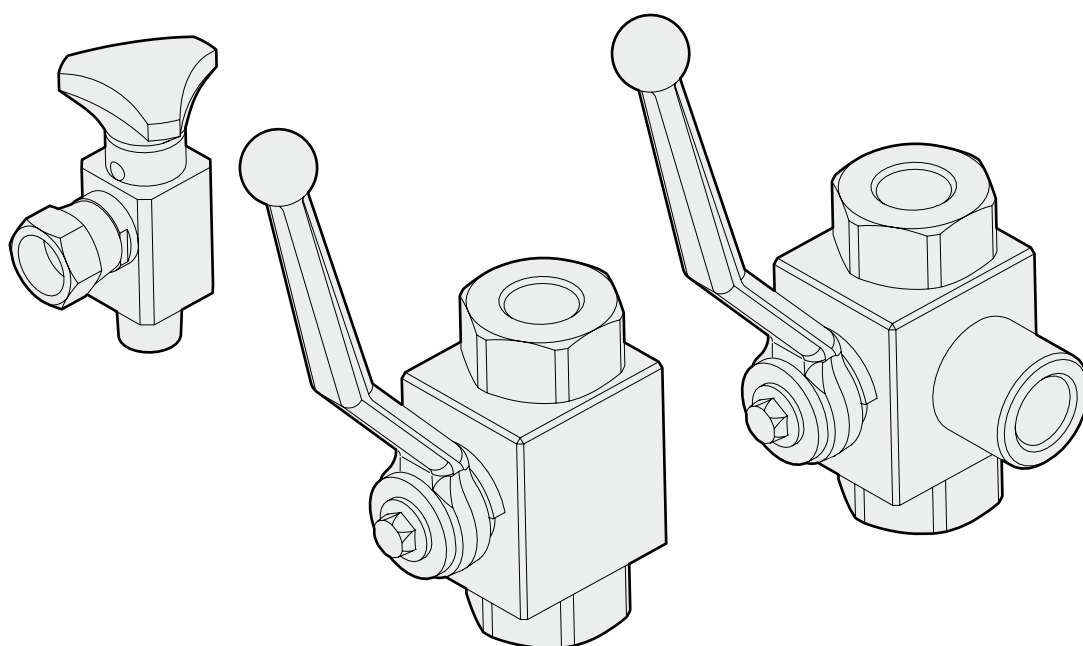
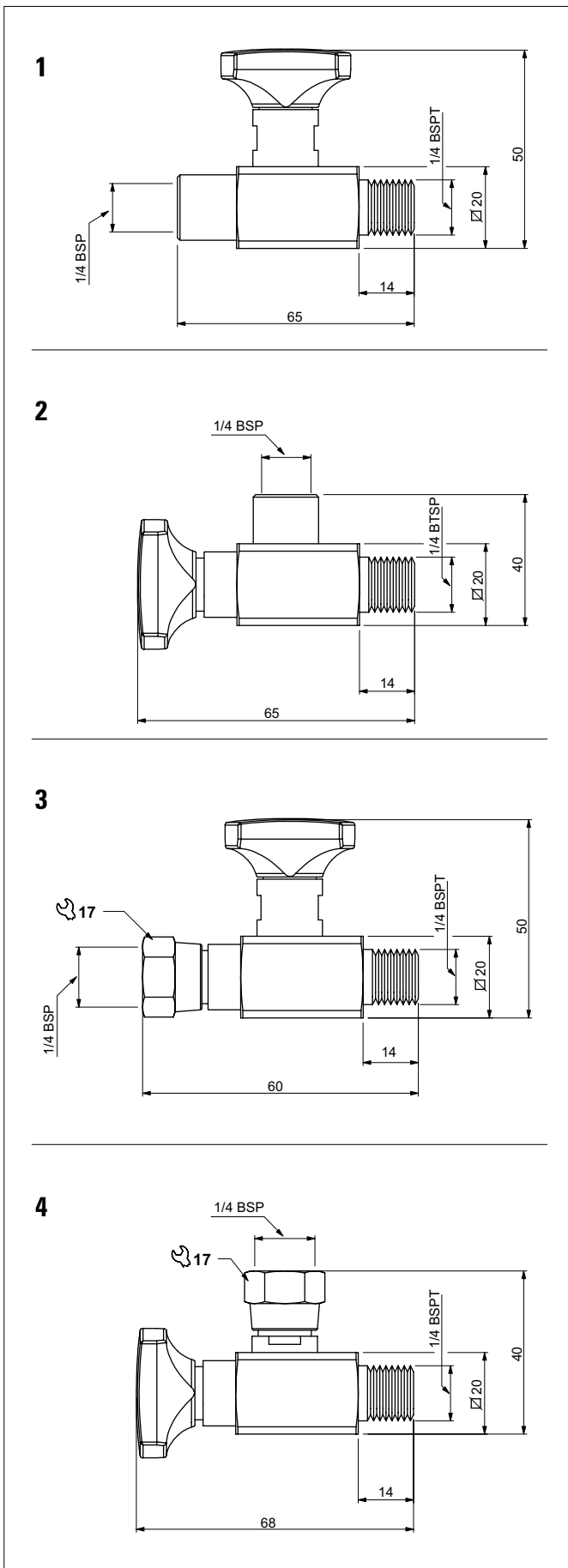


DIVERTER VALVES



PRESSURE GAUGE SHUT-OFF - IN-LINE MOUNTING



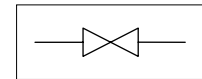
MR.7... in line - MRA.7... at 90°

This in-line mounting shut-off is completely steel made and allows for operating pressure of up to 400 bar. Its uses is essential to protect measuring gauge in the eventuality of fluid hammer.

MRG.7... in line with revolving nut MRAG.7... at 90° with revolving nut

This in-line mounting shut-off is completely steel made and allows for operating pressure of up to 400 bar. It has been designed to allow for independent mounting of the measuring gauge over a 360° angle, obviating in this way any problem relative to the gauge dimensions and mounting position. Its uses is essential to protect measuring gauge in the eventuality of fluid hammer.

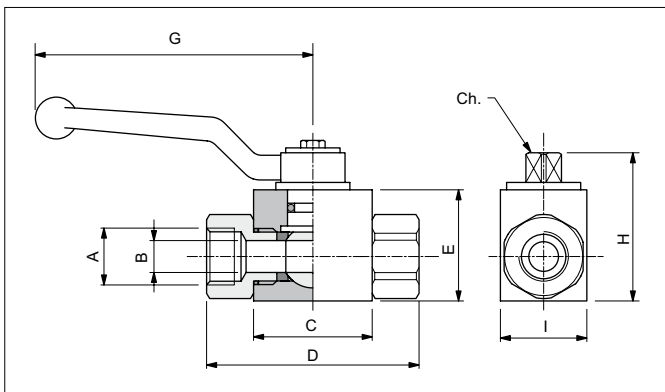
HYDRAULIC SYMBOL



ORDERING CODE

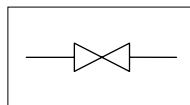
Ref	Code	Description	Pressure max (bar)	Weight (kg)
1	MR7002	In line	400	0.115
2	MRA7002	At 90°	400	0.130
3	MRG7002	In line with revolving nut	400	0.120
4	MRAG7002	At 90° with revolving nut	400	0.135

HIGH PRESSURE - 2 WAY BALL VALVES - IN-LINE MOUNTING



High pressure 2 way ball valves for in line mounting.
Steel body with external zinc plating. Cromed steel ball, aluminium lever.

HYDRAULIC SYMBOL

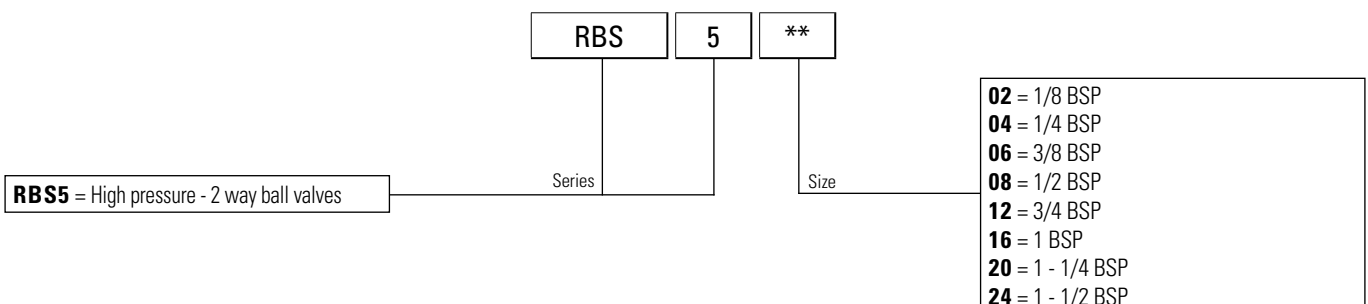


HYDRAULIC FEATURES

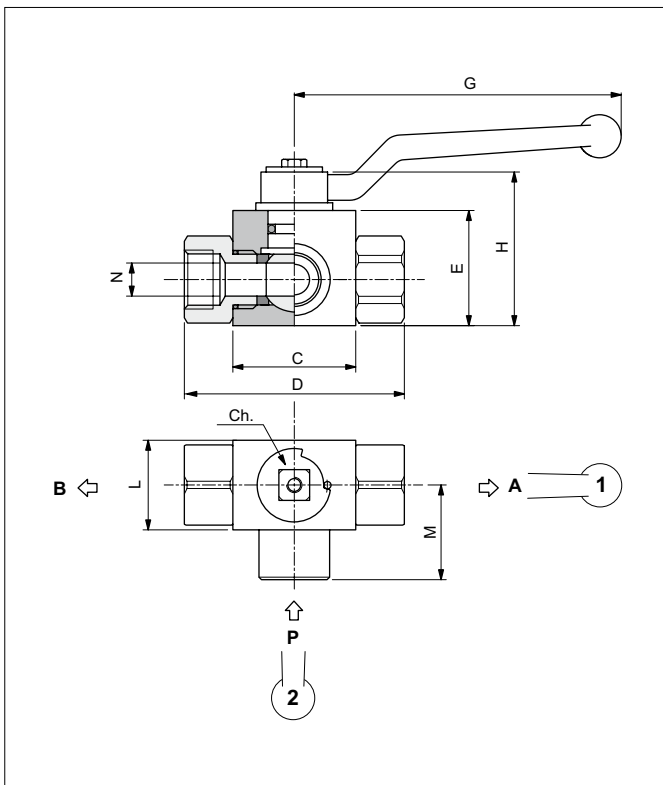
Hydraulic fluid	DIN 51524 Mineral oils
Fluid viscosity	10 ÷ 500 mm ² /s
Fluid temperature	-25°C ÷ 75°C
Ambient temperature	-25°C ÷ 60°C
Max. contamin. level class with filter	ISO 4406:1999 - class 19/17/14

Code	Thread A	Flow max (l/min)	Pressure max (bar)	B (mm)	C (mm)	D (mm)	E (mm)	G (mm)	H (mm)	I (mm)	Ch (mm)	Weight (kg)
RBS502	1/8 BSP	5	500	4	42	71	35	110	49	30	9	0.50
RBS504	1/4 BSP	10	500	6	42	71	35	110	49	30	9	0.50
RBS506	3/8 BSP	25	500	10	44	73	40	110	54	35	9	0.65
RBS508	1/2 BSP	40	500	13	48	83	43	110	57	37	9	0.75
RBS512	3/4 BSP	100	400	20	62	95	55	180	73	45	14	1.40
RBS516	1 BSP	150	350	25	66	113	65	180	83	55	14	2.15
RBS520	1-1/4 BSP	150	350	25	66	121	65	180	83	55	14	2.25
RBS524	1-1/2 BSP	150	350	25	66	124	65	180	83	55	14	2.35

ORDERING CODE



HIGH PRESSURE - 3 WAY BALL VALVES - IN-LINE MOUNTING

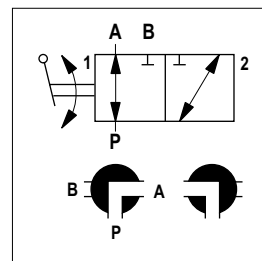


High pressure 3 way ball valves for in line mounting.
Steel body with external zinc plating. Cromed steel ball, aluminium lever.

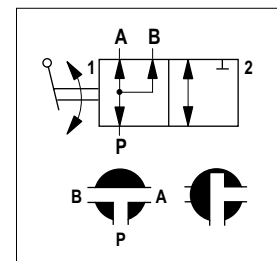
HYDRAULIC FEATURES

Hydraulic fluid	DIN 51524 Mineral oils
Fluid viscosity	10 ÷ 500 mm ² /s
Fluid temperature	-25°C ÷ 75°C
Ambient temperature	-25°C ÷ 60°C
Max. contamin. level class with filter	ISO 4406:1999 - class 19/17/14

HYDRAULIC SYMBOLS



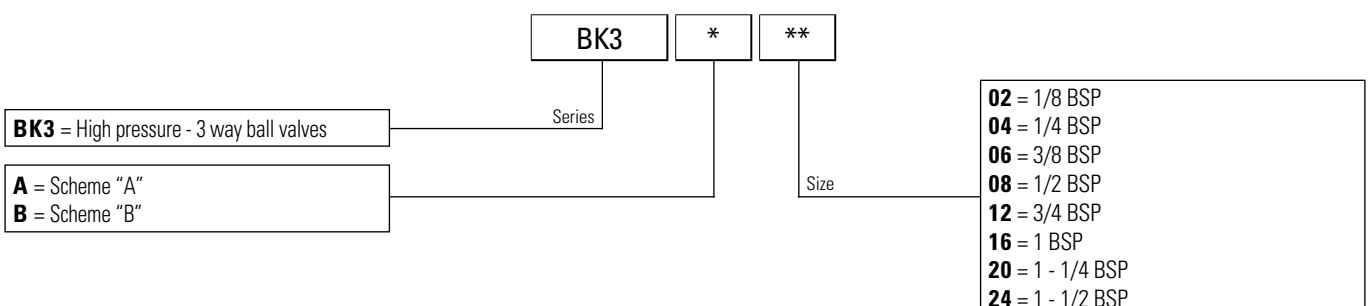
SCHEME "A"



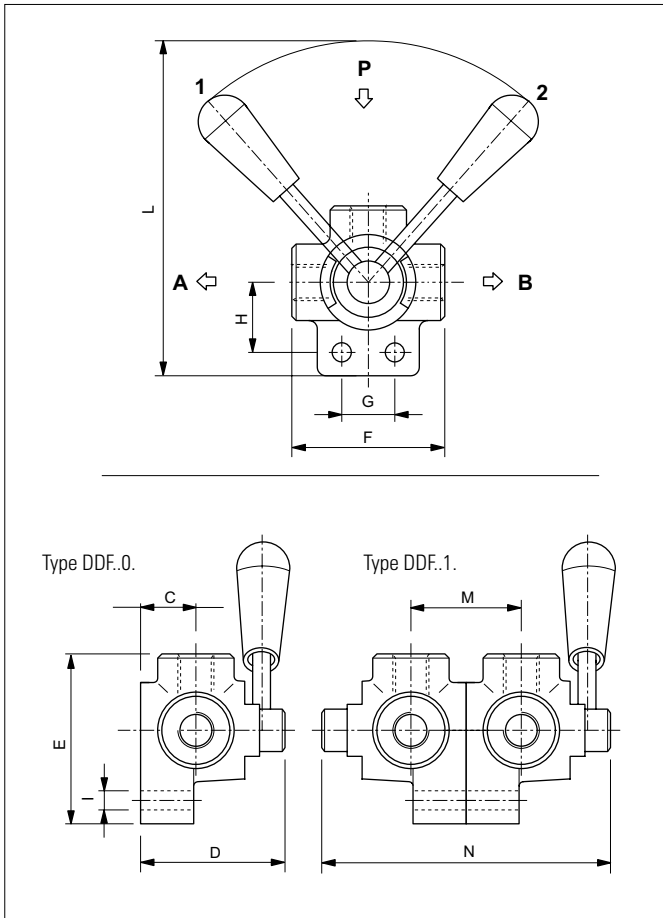
SCHEME "B"

Code	Thread A-B-P	Flow max (l/min)	Pressure max (bar)	C (mm)	D (mm)	E (mm)	G (mm)	H (mm)	L (mm)	M (mm)	N (mm)	Ch (mm)	Weight (kg)
BK3 A/B 02	1/8 BSP	5	400	42	71	35	110	49	30	33.5	4	9	0.50
BK3 A/B 04	1/4 BSP	10	400	42	71	35	110	49	30	33.5	6	9	0.50
BK3 A/B 06	3/8 BSP	25	400	44	73	40	110	54	35	37.0	10	9	0.70
BK3 A/B 08	1/2 BSP	70	350	48	83	43	110	57	37	40.0	13	9	0.80
BK3 A/B 12	3/4 BSP	100	350	62	95	55	180	73	45	52.0	20	14	1.50
BK3 A/B 16	1 BSP	150	350	66	113	65	180	83	55	60.0	25	14	2.35
BK3 A/B 20	1-1/4 BSP	150	350	66	121	65	180	83	55	61.5	25	14	2.50
BK3 A/B 24	1-1/2 BSP	150	350	66	124	65	180	83	55	61.5	25	14	2.70

ORDERING CODE



DIVERTER VALVES - IN-LINE MOUNTING



These valves allow the flow to be diverted to user points A or B by turning the control lever cursor to the left or right. They can be the 3- or 6-way type, with closed or open centre. Bodies in cast iron, control spindle cursor in steel.

HYDRAULIC FEATURES

Hydraulic fluid	DIN 51524 Mineral oils
Fluid viscosity	10 ÷ 500 mm ² /s
Fluid temperature	-25°C ÷ 75°C
Ambient temperature	-25°C ÷ 60°C
Max. contamin. level class with filter	ISO 4406:1999 - class 19/17/14

HYDRAULIC SCHEME

Scheme	Model	
	0 (3 Way)	1 (6 Way)
F open centre		
B closed centre		

Code	Thread A-B.P	Flow max (l/min)	Pressure max (bar)	C (mm)	D (mm)	E (mm)	F (mm)	G (mm)	H (mm)	I (mm)	L (mm)	M (mm)	N (mm)	Weight DDF.0.. (kg)	Weight DDF.1.. (kg)
DDF 06 ..	3/8 BSP	26	350	24	62	75	72	25	31	8.5	158	48	124	1.00	1.90
DDF 08 ..	1/2 BSP	50	350	25	64.5	91	85	32	36	8.5	168	50	129	1.45	2.85
DDF 12 ..	3/4 BSP	100	350	30	74	101	93	32	43	10.5	173	60	148	2.10	4.20
DDF 16 ..	1 BSP	193	350	32	79	116	102	32	51	10.5	183	64	158	2.82	5.60

ORDERING CODE

