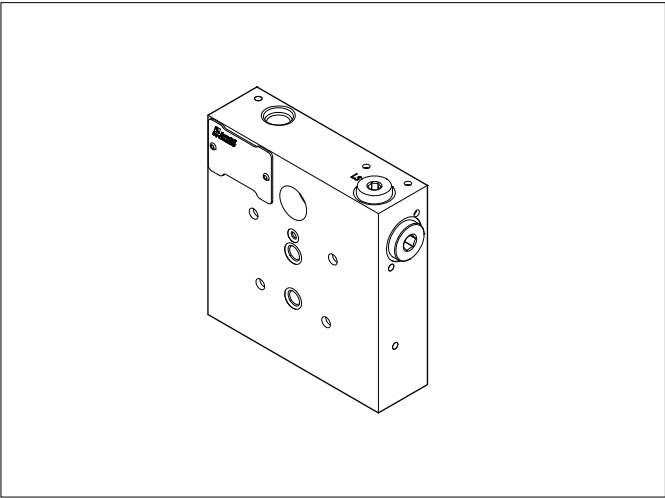


INTERFACE WITH BREVINI HYDRAULICS HPV41 MODULE



Interface between HPV41 and CDC3 / CD3 / CX3 / CXDH3 / CDH3

The HSIF.. interface hydraulically connects the elements of proportional valves CX3/CXDH3 or ON/OFF valves CDC3/CD3/CDH3 with the elements of proportional valve HPV 41.

This type of combination is highly appreciated in those cases involving great differences in flow between the controlled actuators.

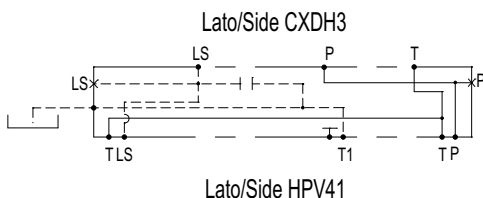
The HSIF module must be inserted into the proportional valve configuration between the last HPV41 working section and the first CDC3/CD3/CX3/CXDH3/CDH3 working section.

Up to eight elements of the HPV41 and eight elements of the CDC3/CD3/CX3/CXDH3/CDH3 can be installed.

The HSIF... interface replace the inlet module for CDC3/CD3/CX3/CXDH3/CDH3. Cast iron zinc plated body.

With the HSIF interface use the FUH outlet module.

HYDRAULIC SYMBOL



ORDERING CODE

HSIF00 Interface

41 HPV Type (HPV 41)

05033 Identifying code

FEATURES

Max. operating pressure	300 bar
Max. Flow	80 l/min
Fluid viscosity	10 ÷ 500 mm ² /s
Fluid temperature	-25° ÷ 75° C
Ambient temperature	-25°C ÷ 60°C
Max. contamination level (filter $\beta_{25} \geq 75$)	ISO 4406:1999: class 21/19/16 NAS 1638: class 10
Weight	3.8 kg

OVERALL DIMENSIONS

