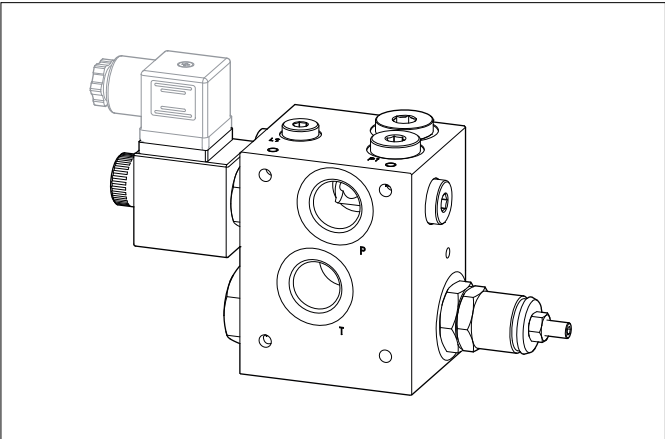


FEH30PQ

OPEN CENTER INLET MODULE FOR FIXED DISPLACEMENT PUMPS



Connector to be ordered separately, see page 55.

ORDERING CODE

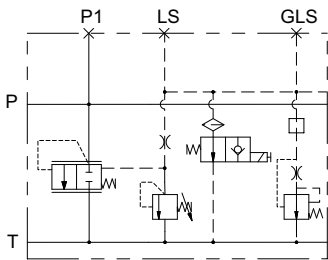
| | |
|--------------|---|
| FEH30 | Inlet module units with pressure relief valve |
| P | Electrical venting valve |
| Q | Pressure compensator element |
| 3 | Size |
| 3 | Ports G1/2" |
| C | Adjustment: C = Grub screw |
| * | Setting ranges: 1 = 35 ÷ 90 bar 2 = 75 ÷ 190 bar 3 = >150 bar |
| * | Voltage venting valve (1): L = 12 Vdc M = 24 Vdc N = 48 Vdc 0 = Without electrical venting valve (plugged) |
| ** | Variants (1-2): S1 = No variants SV = Viton PY = Push button emergency (3) PS = Rotary emergency (3) AJ = AMP Junior connection 22W (see page 56) CX = Deutsch connect. bidirectional diode (see page 56) |
| 1 | Serial No. |

(1) Coils technical data, see page 56)
Voltage codes are not stamped on the plate, their are readable on the coils
(2) Connector to be ordered separately, see page 55;
Other variants available on request.
(3) Emergency (see page 41

Open center inlet module units for fixed displacement pumps with pressure relief valve and electrical venting valve

Module units FEH30.PQ... provide a pressure compensator for fixed displacement pump, a pressure relief valve with adjustable pressure setting ranges CMP-MC/MS and an electrical venting valve CRP04. It includes a pressure compensated load sensing signal bleed to minimize system losses even at high operating pressures. Signal bleed can be closed in case it not required. Cast iron zinc plated body.

HYDRAULIC SYMBOL

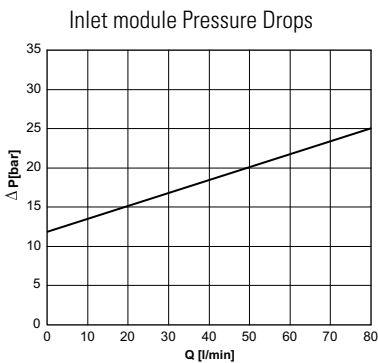


FEATURES

| | |
|--|---|
| Max. operating pressure | 300 bar |
| Setting ranges for pressure relief valve | Spring 1: 35 ÷ 90 bar Spring 2: 75 ÷ 190 bar Spring 3: >150 bar |
| Max. flow | 80 l/min (see characteristic curves) |
| Fluid viscosity | 10 ÷ 500 mm ² /s |
| Max LS bleed flow | 0.5 l/min |
| Fluid temperature | -25°C ÷ 75° C |
| Ambient temperature | -25°C ÷ 60°C |
| Max. contamination level (filter β ₂₅ ≥ 75) | ISO 4406:1999: class 21/19/16 NAS 1638: class 10 |
| Weight | 2.9 kg |
| Max. excitation frequency | 2 Hz |
| Duty cycle | 100% ED |
| Type of protection (in relation to the connection used) | IP65 |

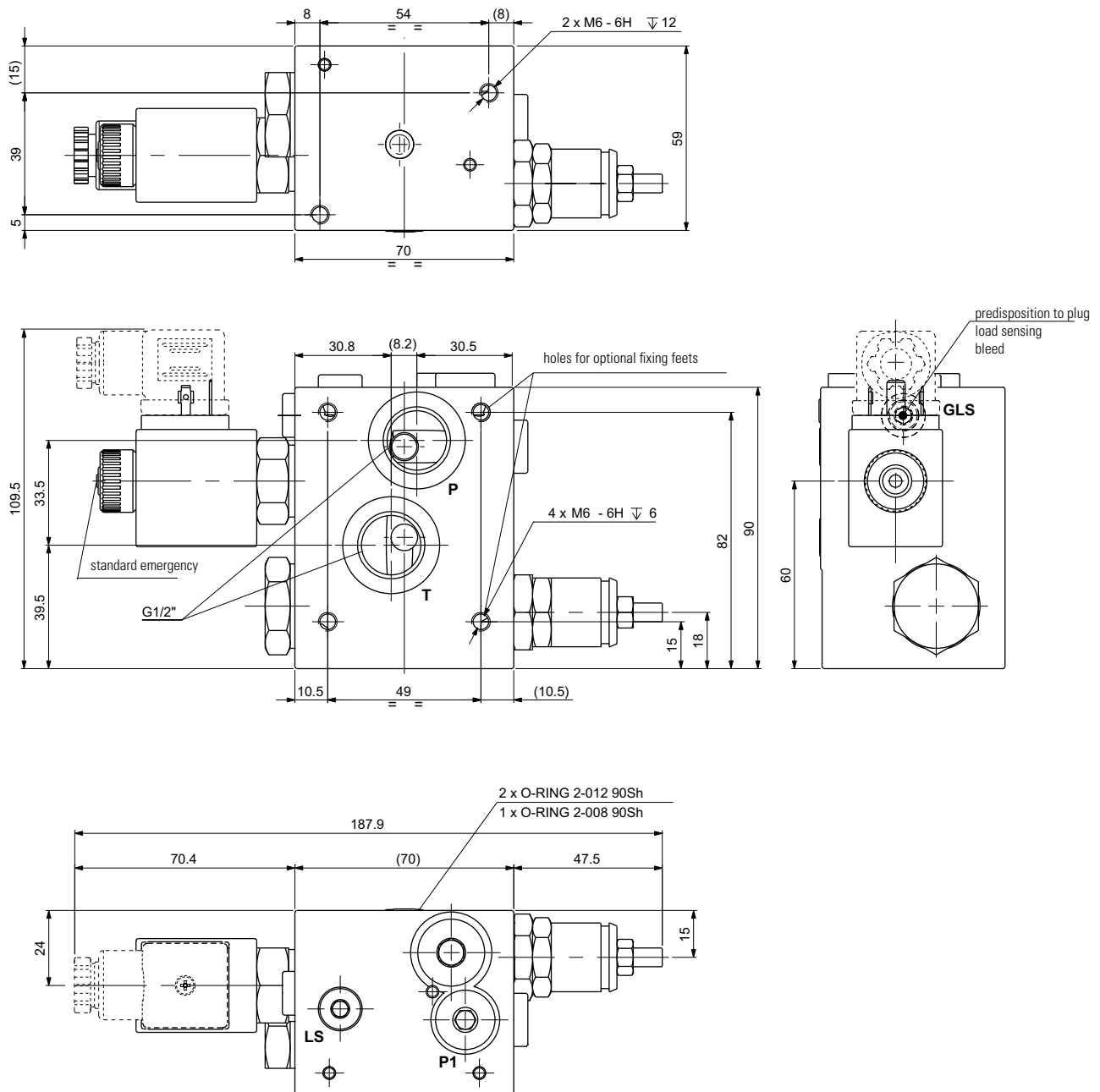
To obtain a correct compensation the inlet flow must be 8% greater the sum of the regulated flows

CHARACTERISTIC CURVE

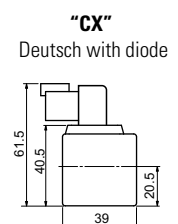
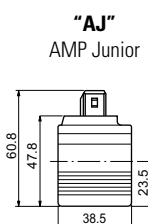
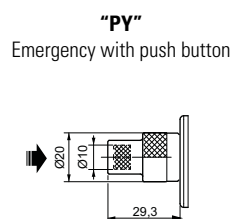
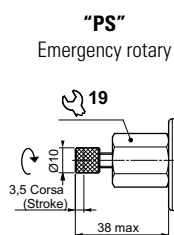


FEH30PQ

OVERALL DIMENSIONS

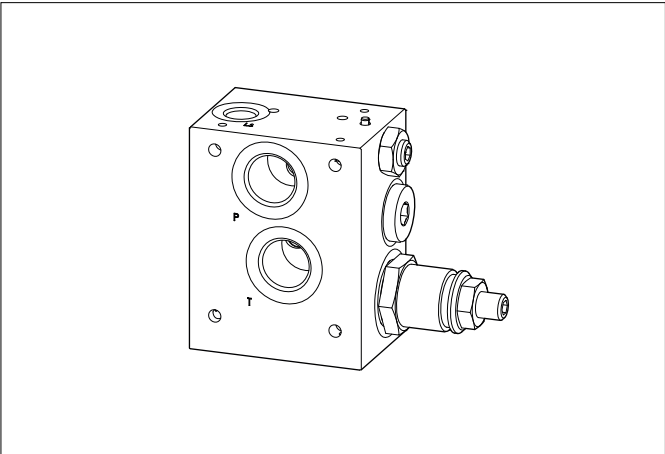


VARIANTS



FEH30LS

CLOSED CENTER INLET MODULE FOR VARIABLE DISPLACEMENT LOAD SENSING PUMPS



ORDERING CODE

FEH30 Inlet module units with pressure relief valve

LS With LS signal

3 Size

***** Ports:
3 = G1/2" (P,T ports)
G1/4" (LS port)
4 = 7/8" - 14UNF (P,T ports)
7/16" - 20UNF (LS port)

***** Adjustment:
M = Plastic knob
C = Grub screw

***** Setting ranges:
1 = max 50 bar
2 = max 140 bar
3 = max 350 bar

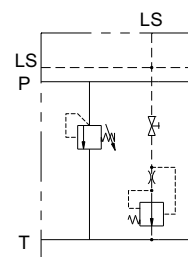
****** Variants:
00 = No variants
V1 = Viton

1 Serial No.

Closed center inlet module units for variable displacement Load Sensing pumps with pressure relief valve

Module units FEH30.LS... for variable displacement Load Sensing pump provide a pressure relief valve CMP30 with adjustable pressure setting ranges and a pressure compensated load sensing signal bleed to minimize system losses even at high operating pressures. Signal bleed can be closed in case it is not required. Cast iron zinc plated body.

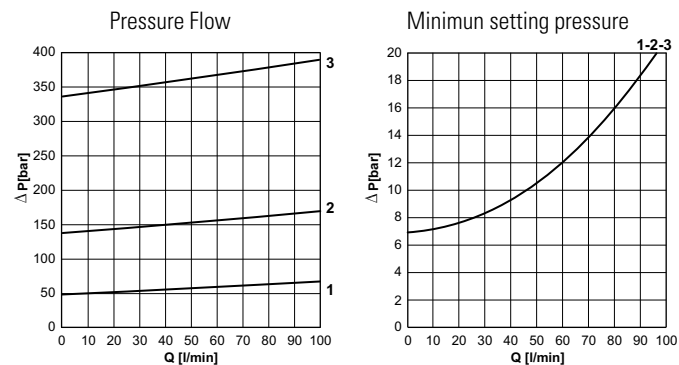
HYDRAULIC SYMBOL



FEATURES

| | |
|--|--|
| Max. operating pressure | 300 bar |
| Setting ranges for pressure relief valve | Spring 1: max 50 bar Spring 2: max 140 bar Spring 3: max 350 bar |
| Max. Flow | 80 l/min (see characteristic curves) |
| Fluid viscosity | 10 ÷ 500 mm ² /s |
| Fluid temperature | -25° ÷ 75° C |
| Ambient temperature | -25°C ÷ 60°C |
| Max. contamination level (filter $\beta_{25} \geq 75$) | ISO 4406:1999: class 21/19/16 NAS 1638: class 10 |
| Weight | 1.9 kg |

PRESSURE RELIEF VALVE CURVES



FEH30LS

OVERALL DIMENSIONS

