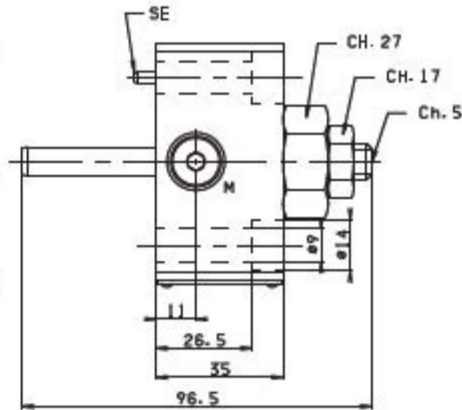
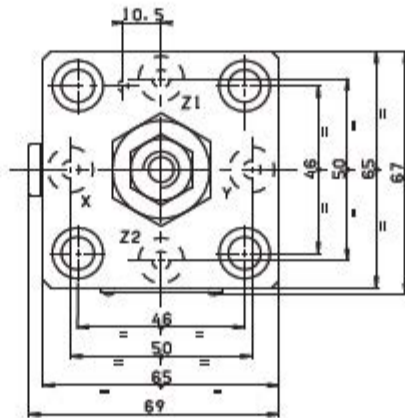
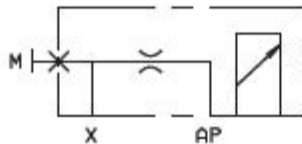


OVERALL DIMENSIONS KEC.16.CQ.. COVER WITH STROKE ADJUSTMENT



Weight: 0,9 Kg

M = pressure gauge attachment

Orifice with calibrated $\varnothing 1$ mm standard diameter

The covers are supplied with M8x40 UNI 5931

fixing screws, reference pin SE $\varnothing 3 \times 12$ UNI 6873-71

Tightening torque 19÷24 Nm/1.9÷2.4 Kgm with 8.8 screws