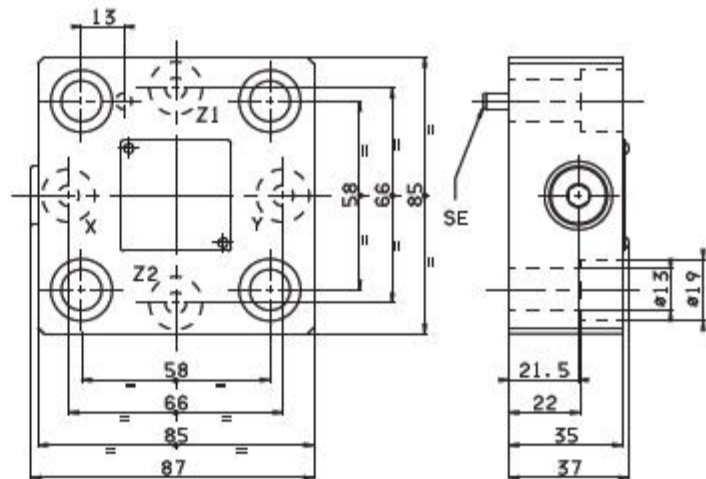
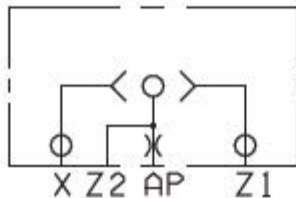


OVERALL DIMENSIONS KEC.25.SH... COVER WITH BUILT-IN EXCHANGE VALVE



Weight: 1,5 Kg

M = pressure gauge attachment

Orifice with calibrated $\varnothing 1$ mm standard diameter

The covers are supplied with M12x40 UNI 5931

fixing screws, reference pin SE $\varnothing 5 \times 12$ UNI 6873-71

tightening torque 69÷80 Nm/6.9÷8 Kgm with 8.8 screws