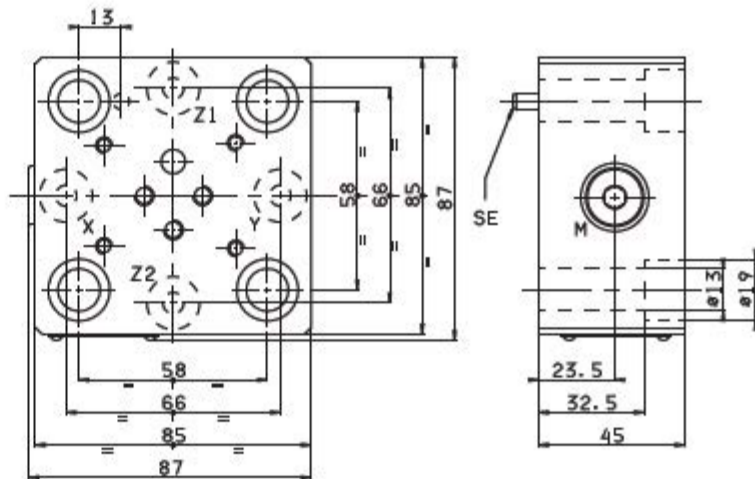
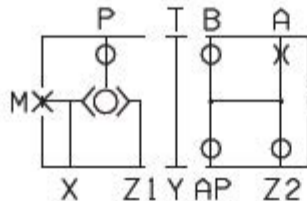


OVERALL DIMENSIONS **KEC.25.SP** COVER WITH BUILT-IN EXCHANGE VALVE AND INTERFACE **CETOP 3/NG6**



Weight: 2 Kg

M = pressure gauge attachment

Orifice with calibrated $\varnothing 1$ mm standard diameter

The covers are supplied with M12x50 UNI 5931

fixing screws, reference pin SE $\varnothing 5 \times 12$ UNI 6873-71

tightening torque $69 \div 80$ Nm/ $6.9 \div 8$ Kgm with 8.8 screws