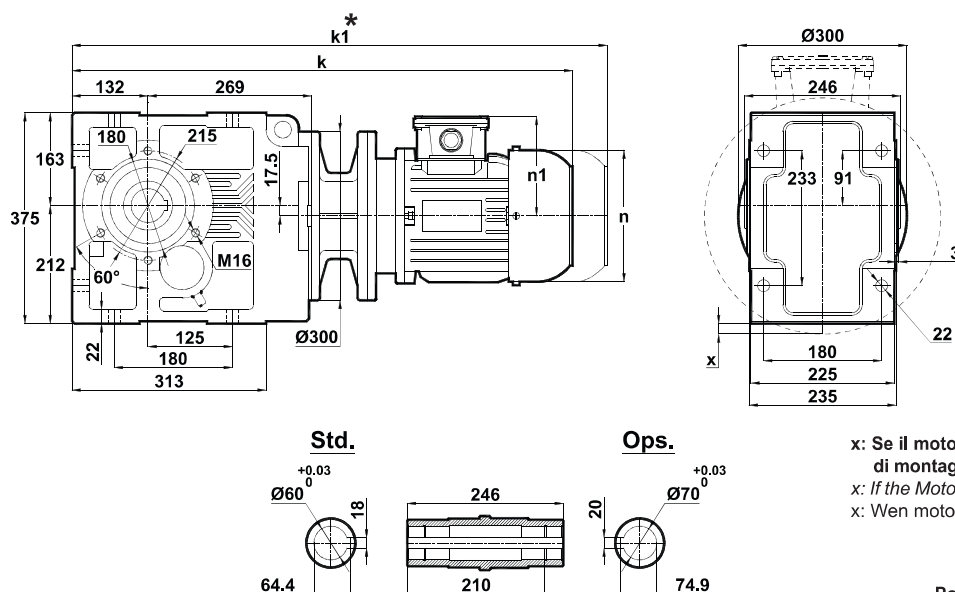




Tabelle dimensionali Dimension Pages Abmessungsseiten

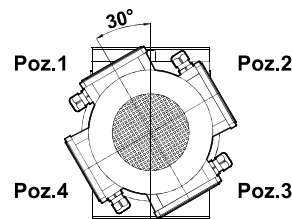
Foro di centraggio filettato secondo DIN 332 foglio 2 / Tapped center hole to DIN 332, sheet 2 / Zentrierung mit gewinde DIN 332, Blatt 2

KV573.00



x: Se il motore è più in basso rispetto alla piastra di montaggio del piede
x: If the Motor is lower than the foot mounting plane
x: Wenn motor ist niedriger den die Anschlußplatte

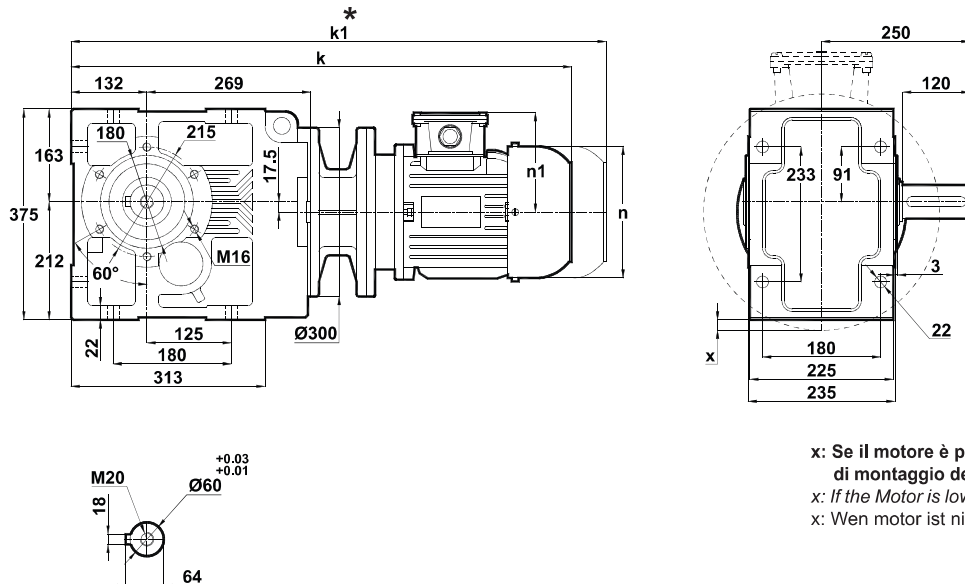
Posizioni morsettiera
Terminal Box Positions
Klemmenkasten Positionen



100-112-132-160-180
Tipo / Type / Typ

	100L/B5	112M/B5	132S/B5	132M/B5	160M/B5	160L/B5	180M/B5	180L/B5
k	790	810	875	913	1060	1104	1117	1155
k1	925	945	1020	1058	1230	1274	1287	1325
n	194	218	258	258	310	310	348	348
n1	135	146	168	168	225	225	241	241
x	-	-	-	-	-	-	-	-

KV573.01



x: Se il motore è più in basso rispetto alla piastra di montaggio del piede
x: If the Motor is lower than the foot mounting plane
x: Wenn motor ist niedriger den die Anschlußplatte

	100L/B5	112M/B5	132S/B5	132M/B5	160M/B5	160L/B5	180M/B5	180L/B5
k	790	810	875	913	1060	1104	1117	1155
k1	925	945	1020	1058	1230	1274	1287	1325
n	194	218	258	258	310	310	348	348
n1	135	146	168	168	225	225	241	241
x	-	-	-	-	-	-	-	-

La misura "k1" è per motori dotati di freno. I riduttori completi di motori elettrici tipo 63 e 71 non hanno la ventola di raffreddamento, che invece hanno gli altri tipi.
Dimension "k1" is for motors with brake. Gearboxes with 63 and 71 type electrical motors are not fan cooled, other types are fan cooled.
Maße "k1" ist für Bremsenmotoren. Getrieben mit 63 und 71 typ Motoren sind ohne Kühlung, andere Typen sind mit Ventilator gekühlt.

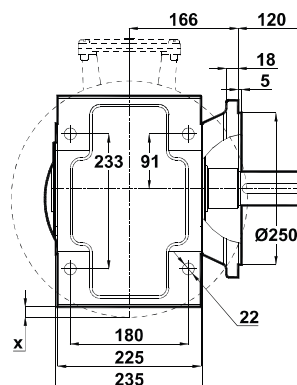
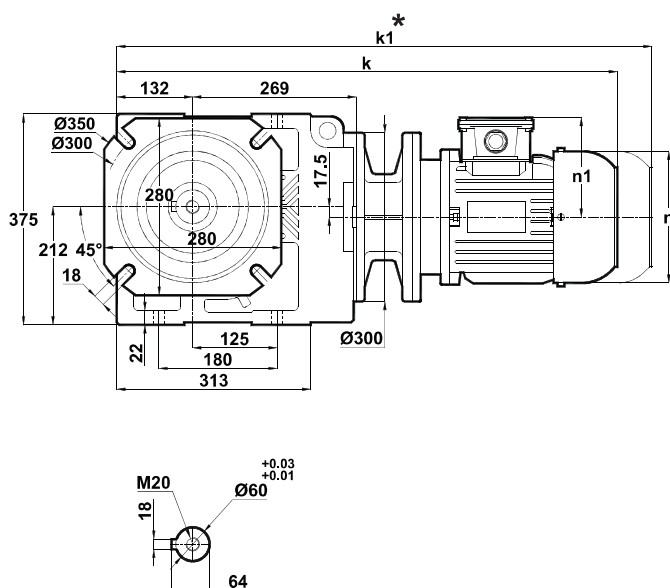
La misura "k1" è per motori dotati di freno.
Dimension "k1" is for motors with brake.
Maße "k1" ist für Bremsenmotoren.



Tabelle dimensionali **Dimension Pages** **Abmessungsseiten**

Foro di centraggio filettato secondo DIN 332 foglio 2 / Tapped center hole to DIN 332, sheet 2 / Zentrierung mit gewinde DIN 332, Blatt 2

KV573.02



x: Se il motore è più in basso rispetto alla piastra di montaggio del piede

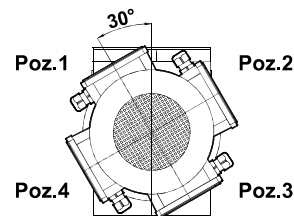
x: If the Motor is lower than the foot mounting plane

x: Wenn motor ist niedriger den die Anschlußplatte

Posizioni morsettiera

Terminal Box Positions

Klemmenkasten Positionen

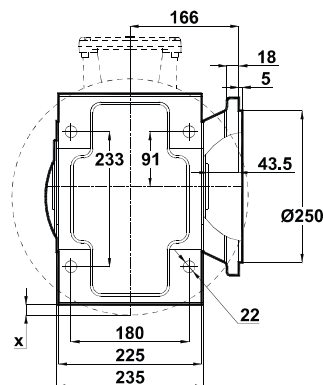
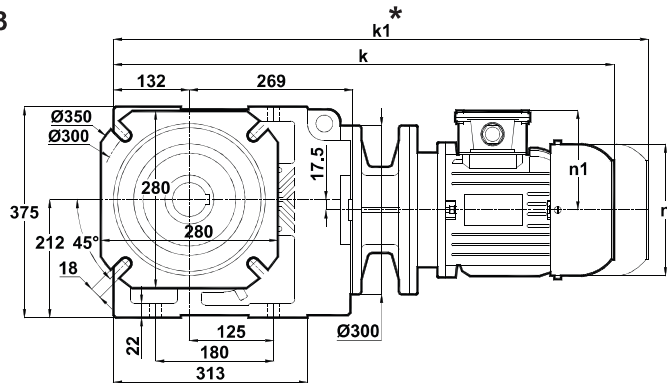


100-112-132-160-180

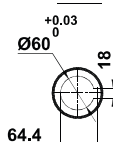
Tipo / Type / Typ

	100L/B5	112M/B5	132S/B5	132M/B5	160M/B5	160L/B5	180M/B5	180L/B5
k	790	810	875	913	1060	1104	1117	1155
k1	925	945	1020	1058	1230	1274	1287	1325
n	194	218	258	258	310	310	348	348
n1	135	146	168	168	225	225	241	241
x	-	-	-	-	-	-	-	-

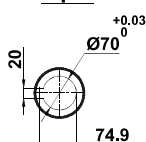
KV573.03



Std.



Ops.



x: Se il motore è più in basso rispetto alla piastra di montaggio del piede

x: If the Motor is lower than the foot mounting plane

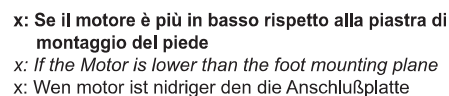
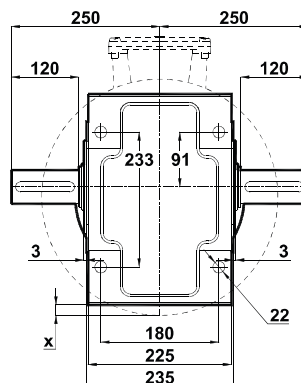
x: Wenn motor ist niedriger den die Anschlußplatte

	100L/B5	112M/B5	132S/B5	132M/B5	160M/B5	160L/B5	180M/B5	180L/B5
k	790	810	875	913	1060	1104	1117	1155
k1	925	945	1020	1058	1230	1274	1287	1325
n	194	218	258	258	310	310	348	348
n1	135	146	168	168	225	225	241	241
x	-	-	-	-	-	-	-	-

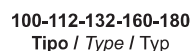
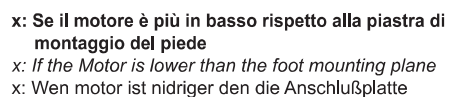
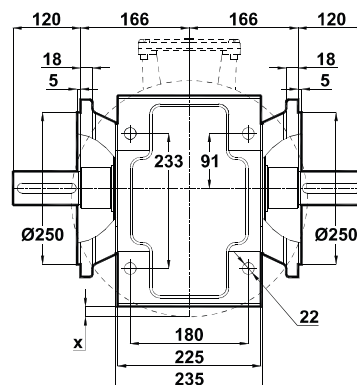
La misura "k1" è per motori dotati di freno.

Dimension "k1" is for motors with brake.

Maße "k1" ist für Bremsenmotoren.

**KV573.04**

Posizioni morsettiera
Terminal Box Positions
Klemmenkasten Positionen

**KV573.05**

La misura "k1" è per motori dotati di freno. I riduttori completi di motori elettrici tipo 63 e 71 non hanno la ventola di raffreddamento, che invece hanno gli altri tipi.

Dimension "k1" is for motors with brake. Gearboxes with 63 and 71 type electrical motors are not fan cooled, other types are fan cooled.

Maße "k1" ist für Bremsenmotoren, Getrieben mit 63 und 71 typ Motoren sind ohne Kühlung, andere Typen zind mit Ventilator gekühlt.

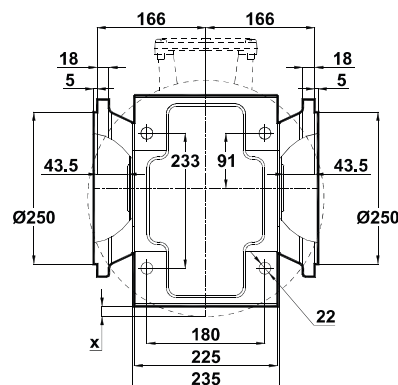
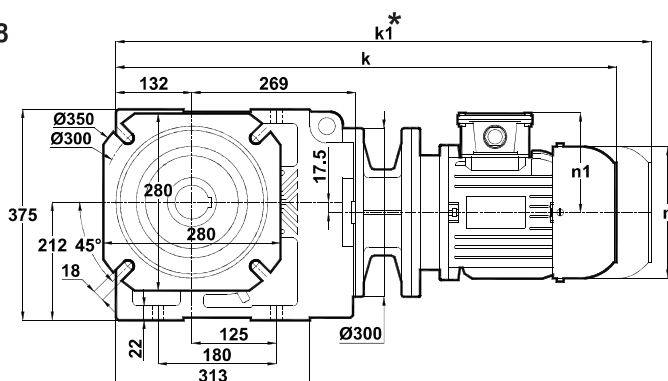
La misura "k1" è per motori dotati di freno.
Dimension "k1" is for motors with brake.
Maße "k1" ist für Bremsenmotoren.



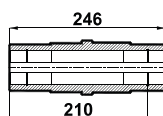
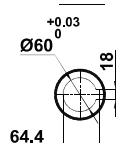
Tabelle dimensionali **Dimension Pages** **Abmessungsseiten**

Foro di centraggio filettato secondo DIN 332 foglio 2 / Tapped center hole to DIN 332, sheet 2 / Zentrierung mit gewinde DIN 332, Blatt 2

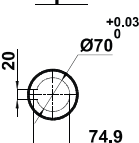
KV573.08



Std.

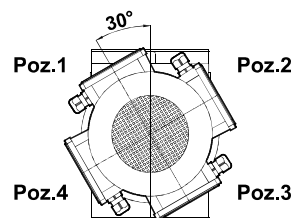


Ops.



x: Se il motore è più in basso rispetto alla piastra di montaggio del piede
x: If the Motor is lower than the foot mounting plane
x: Wenn motor ist niedriger den die Anschlußplatte

Posizioni morsettiera
Terminal Box Positions
Klemmenkasten Positionen



100-112-132-160-180
Tipo / Type / Typ

	100L/B5	112M/B5	132S/B5	132M/B5	160M/B5	160L/B5	180M/B5	180L/B5
k	790	810	875	913	1060	1104	1117	1155
k1	925	945	1020	1058	1230	1274	1287	1325
n	194	218	258	258	310	310	348	348
n1	135	146	168	168	225	225	241	241
x	-	-	-	-	-	-	-	-

La misura "k1" è per motori dotati di freno.
Dimension "k1" is for motors with brake.
Maße "k1" ist für Bremsenmotoren.



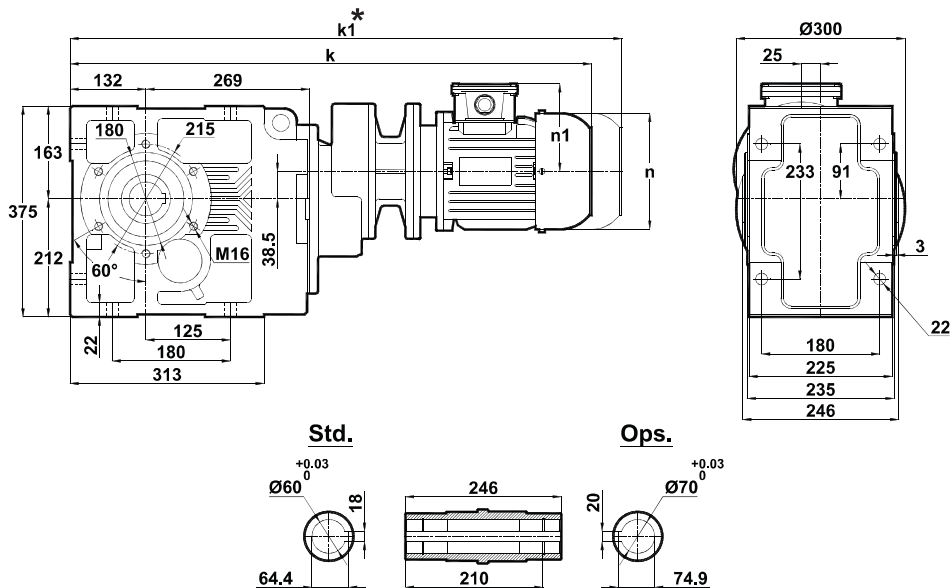
Tabelle dimensionali

Dimension Pages

Abmessungsseiten

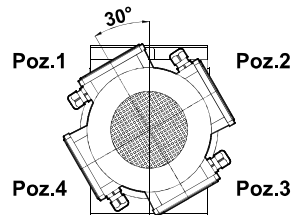
Foro di centraggio filettato secondo DIN 332 foglio 2 / Tapped center hole to DIN 332, sheet 2 / Zentrierung mit gewinde DIN 332, Blatt 2

KV574.00



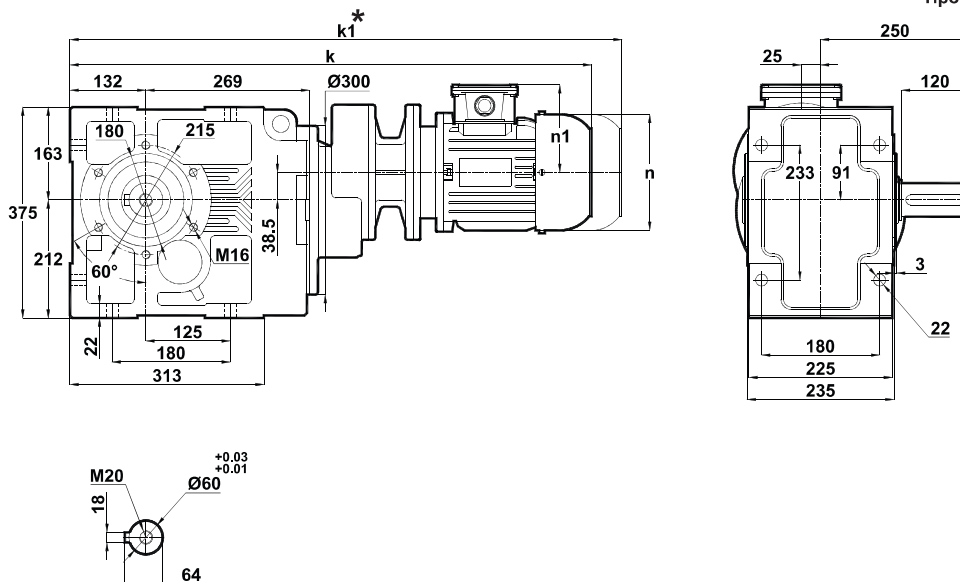
	71/B5	80/B5	90S/B5	90L/B5	100L/B5
k	773	793	813	838	887
k1	893	913	938	963	1022
n	138	156	176	176	194
n1	110	118	126	126	135

Posizioni morsetteria
Terminal Box Positions
Klemmenkasten Positionen



71-80-90-100
Tipo / Type / Typ

KV574.01



	71/B5	80/B5	90S/B5	90L/B5	100L/B5
k	773	793	813	838	887
k1	893	913	938	963	1022
n	138	156	176	176	194
n1	110	118	126	126	135

La misura "k1" è per motori dotati di freno. I riduttori completi di motori elettrici tipo 63 e 71 non hanno la ventola di raffreddamento, che invece hanno gli altri tipi.
Dimension "k1" is for motors with brake. Gearboxes with 63 and 71 type electrical motors are not fan cooled, other types are fan cooled.
Maße "k1" ist für Bremsenmotoren. Getrieben mit 63 und 71 typ Motoren sind ohne Kühlung, andere Typen sind mit Ventilator gekühlt.

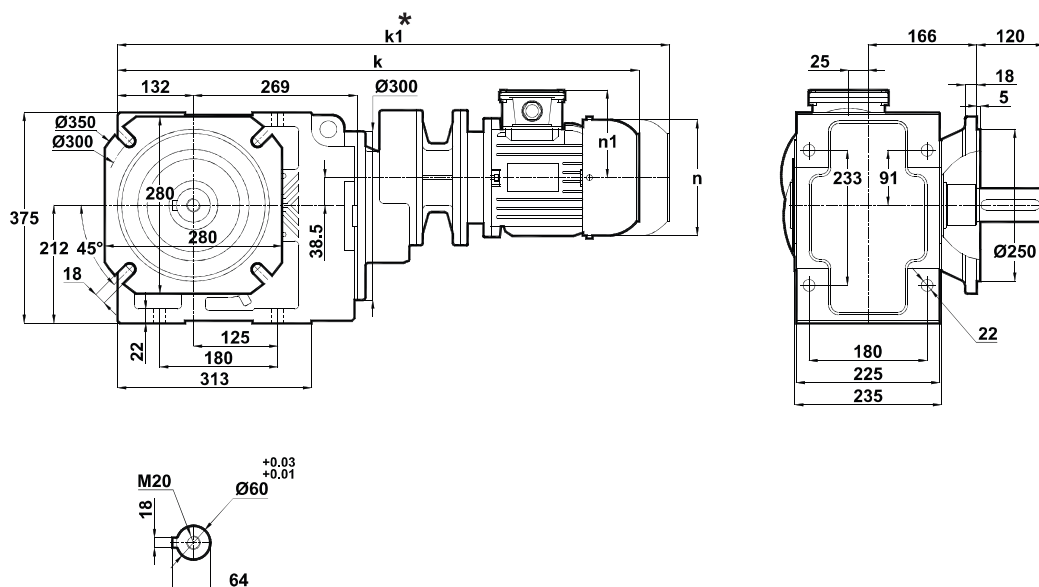
La misura "k1" è per motori dotati di freno.
Dimension "k1" is for motors with brake.
Maße "k1" ist für Bremsenmotoren.



Tabelle dimensionali *Dimension Pages* Abmessungsseiten

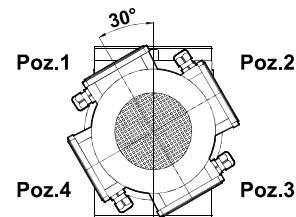
Foro di centraggio filettato secondo DIN 332 foglio 2 / Tapped center hole to DIN 332, sheet 2 / Zentrierung mit gewinde DIN 332, Blatt 2

KV574.02



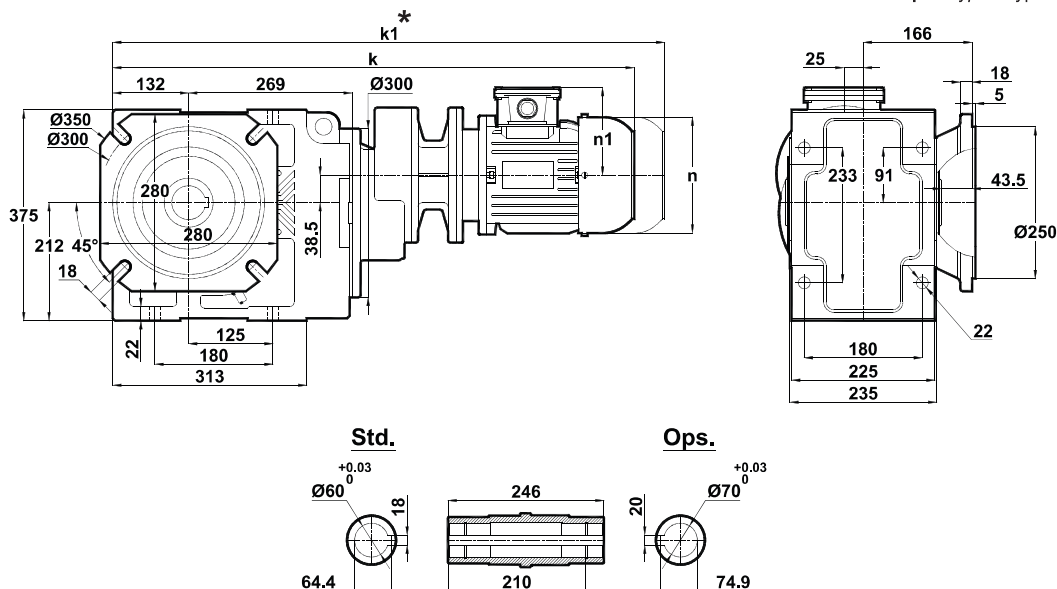
	71/B5	80/B5	90S/B5	90L/B5	100L/B5
k	773	793	813	838	887
k1	893	913	938	963	1022
n	138	156	176	176	194
n1	110	118	126	126	135

Posizioni morsettiera
 Terminal Box Positions
 Klemmenkasten Positionen



71-80-90-100
 Tipo / Type / Typ

KV574.03



	71/B5	80/B5	90S/B5	90L/B5	100L/B5
k	773	793	813	838	887
k1	893	913	938	963	1022
n	138	156	176	176	194
n1	110	118	126	126	135

La misura "k1" è per motori dotati di freno.
 Dimension "k1" is for motors with brake.
 Maße "k1" ist für Bremsenmotoren.



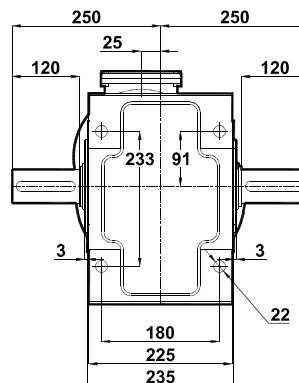
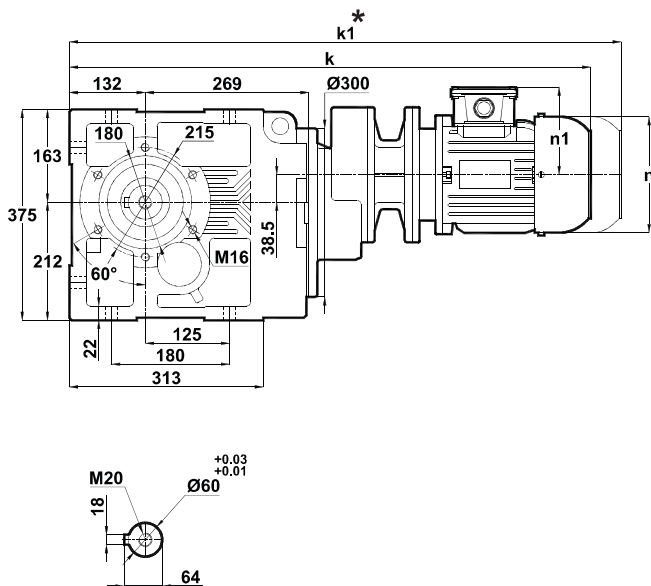
Tabelle dimensionali

Dimension Pages

Abmessungsseiten

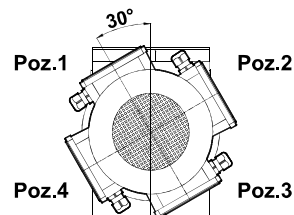
Foro di centraggio filettato secondo DIN 332 foglio 2 / Tapped center hole to DIN 332, sheet 2 / Zentrierung mit gewinde DIN 332, Blatt 2

KV574.04



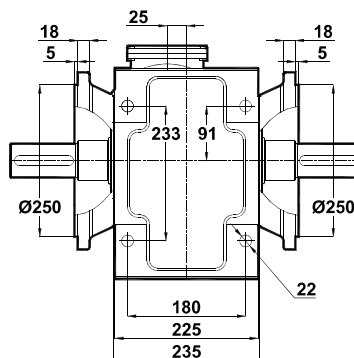
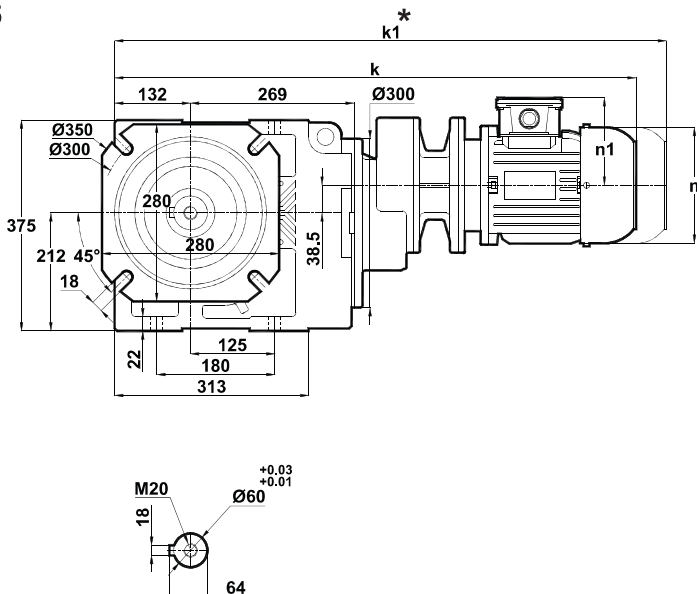
Posizioni morsetteria
Terminal Box Positions
Klemmenkasten Positionen

	71/B5	80/B5	90S/B5	90L/B5	100L/B5
k	773	793	813	838	887
k1	893	913	938	963	1022
n	138	156	176	176	194
n1	110	118	126	126	135



71-80-90-100
Tipo / Type / Typ

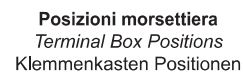
KV574.05



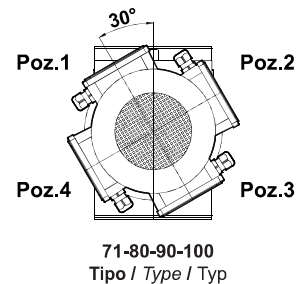
	71/B5	80/B5	90S/B5	90L/B5	100L/B5
k	773	793	813	838	887
k1	893	913	938	963	1022
n	138	156	176	176	194
n1	110	118	126	126	135

La misura "k1" è per motori dotati di freno. I riduttori completi di motori elettrici tipo 63 e 71 non hanno la ventola di raffreddamento, che invece hanno gli altri tipi.
Dimension "k1" is for motors with brake. Gearboxes with 63 and 71 type electrical motors are not fan cooled, other types are fan cooled.
Maße "k1" ist für Bremsenmotoren. Getrieben mit 63 und 71 typ Motoren sind ohne Kühlung, andere Typen sind mit Ventilator gekühlt.

La misura "k1" è per motori dotati di freno.
Dimension "k1" is for motors with brake.
Maße "k1" ist für Bremsenmotoren.

**KV574.08**

	71/B5	80/B5	90S/B5	90L/B5	100L/B5
k	773	793	813	838	887
k1	893	913	938	963	1022
n	138	156	176	176	194
n1	110	118	126	126	135



La misura "k1" è per motori dotati di freno.
Dimension "k1" is for motors with brake.
Maße "k1" ist für Bremsenmotoren.



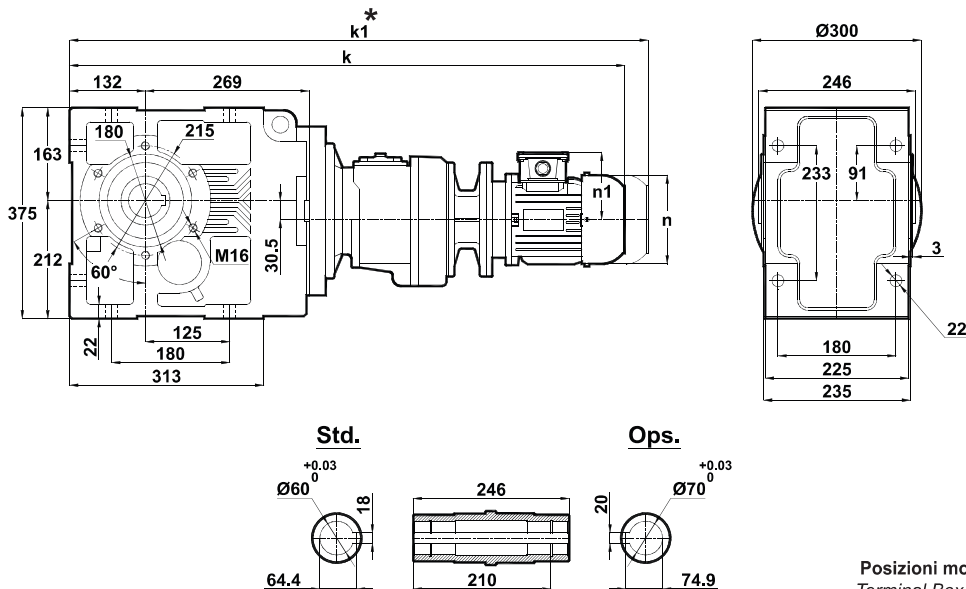
Tabelle dimensionali

Dimension Pages

Abmessungsseiten

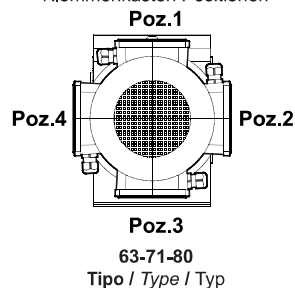
Foro di centraggio filettato secondo DIN 332 foglio 2 / Tapped center hole to DIN 332, sheet 2 / Zentrierung mit gewinde DIN 332, Blatt 2

KV575.00
KV576.00

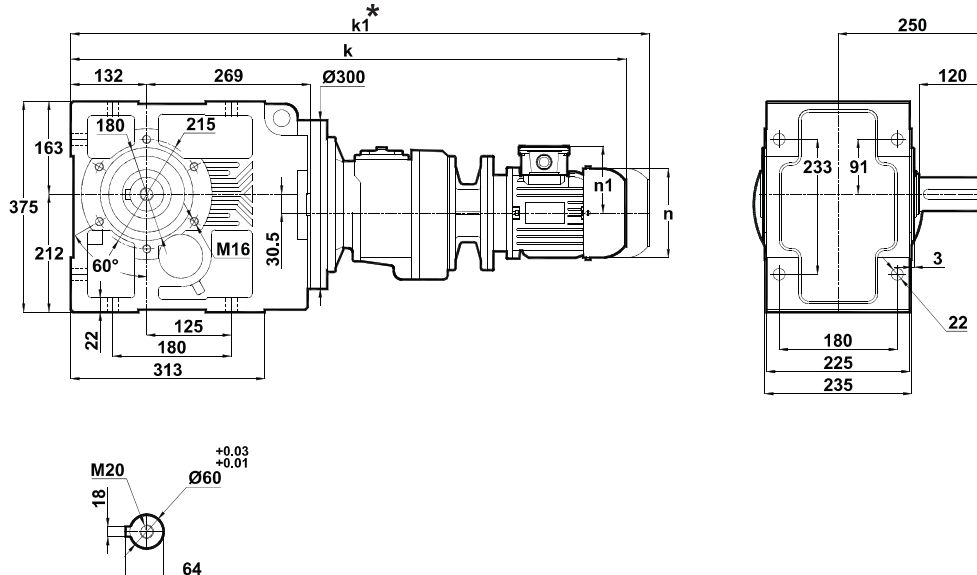


	63/B5	71/B5	80/B5
k	877	874	923
k1	-	994	1043
n	116	138	156
n1	97	110	118

Posizioni morsettiera
Terminal Box Positions
Klemmenkasten Positionen



KV575.01
KV576.01



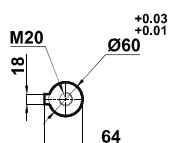
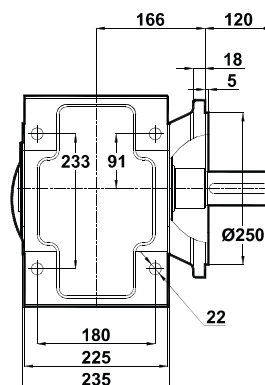
	63/B5	71/B5	80/B5
k	877	874	923
k1	-	994	1043
n	116	138	156
n1	97	110	118

La misura "k1" è per motori dotati di freno. I riduttori completi di motori elettrici tipo 63 e 71 non hanno la ventola di raffreddamento, che invece hanno gli altri tipi.
Dimension "k1" is for motors with brake. Gearboxes with 63 and 71 type electrical motors are not fan cooled, other types are fan cooled.
Maße "k1" ist für Bremsenmotoren. Getrieben mit 63 und 71 typ Motoren sind ohne Kühlung, andere Typen sind mit Ventilator gekühlt.

La misura "k1" è per motori dotati di freno.
Dimension "k1" is for motors with brake.
Maße "k1" ist für Bremsenmotoren.



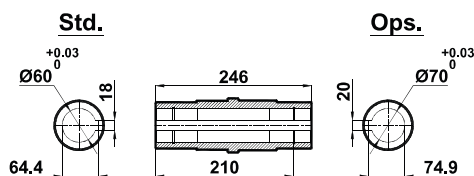
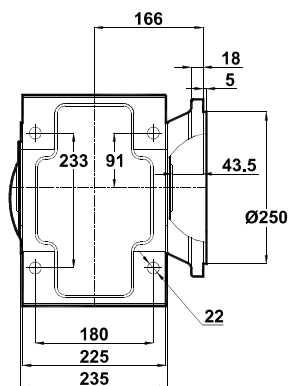
KV575.02
KV576.02



	63/B5	71/B5	80/B5
k	877	874	923
k1	-	994	1043
n	116	138	156
n1	97	110	118

Poz.3
63-71-80
Tipo / Type / Typ

KV575.03
KV576.03

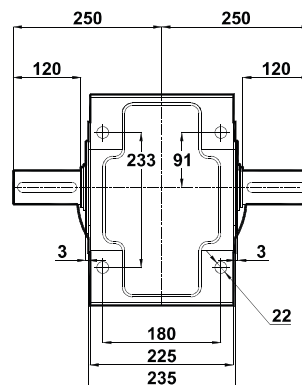


	63/B5	71/B5	80/B5
k	877	874	923
k1	-	994	1043
n	116	138	156
n1	97	110	118

La misura "k1" è per motori dotati di freno.
Dimension "k1" is for motors with brake.
Maße "k1" ist für Bremsenmotoren.



KV575.04
KV576.04



	63/B5	71/B5	80/B5
k	877	874	923
k1	-	994	1043
n	116	138	156
n1	97	110	118

Poz.1

Poz.2

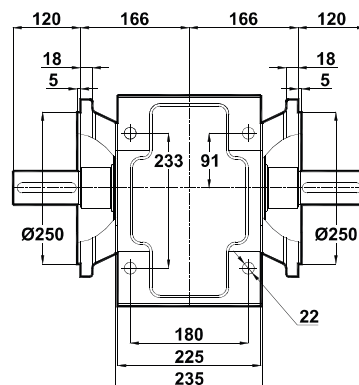
Poz.3

Poz.4

63-71-80

Tipo / Type / Typ

KV575.05
KV576.05



	63/B5	71/B5	80/B5
k	877	874	923
k1	-	994	1043
n	116	138	156
n1	97	110	118

La misura "k1" è per motori dotati di freno. I riduttori completi di motori elettrici tipo 63 e 71 non hanno la ventola di raffreddamento, che invece hanno gli altri tipi.

Dimension "k1" is for motors with brake. Gearboxes with 63 and 71 type electrical motors are not fan cooled, other types are fan cooled.

Maße "k1" ist für Bremsenmotoren. Getrieben mit 63 und 71 typ Motoren sind ohne Kühlung, andere Typen sind mit Ventilator gekühlt.

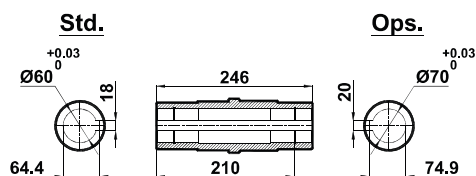
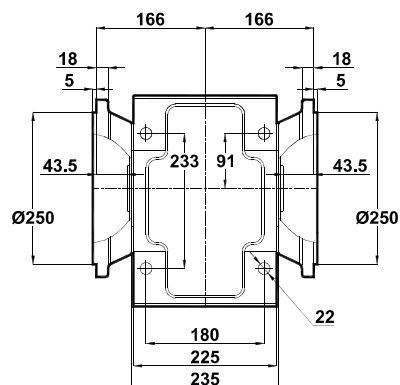
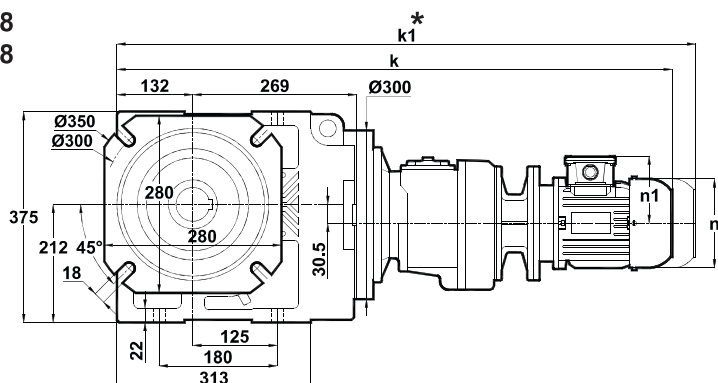
La misura "k1" è per motori dotati di freno.
Dimension "k1" is for motors with brake.
Maße "k1" ist für Bremsenmotoren.



Tabelle dimensionali *Dimension Pages* Abmessungsseiten

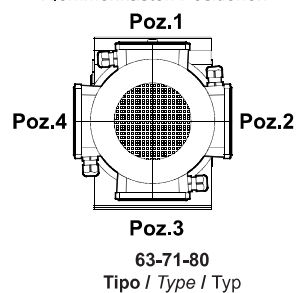
Foro di centraggio filettato secondo DIN 332 foglio 2 / Tapped center hole to DIN 332, sheet 2 / Zentrierung mit gewinde DIN 332, Blatt 2

KV575.08
KV576.08



	63/B5	71/B5	80/B5
k	877	874	923
k1	-	994	1043
n	116	138	156
n1	97	110	118

Posizioni morsettieria
Terminal Box Positions
 Klemmenkasten Positionen



La misura "k1" è per motori dotati di freno.
 Dimension "k1" is for motors with brake.
 Maße "k1" ist für Bremsenmotoren.