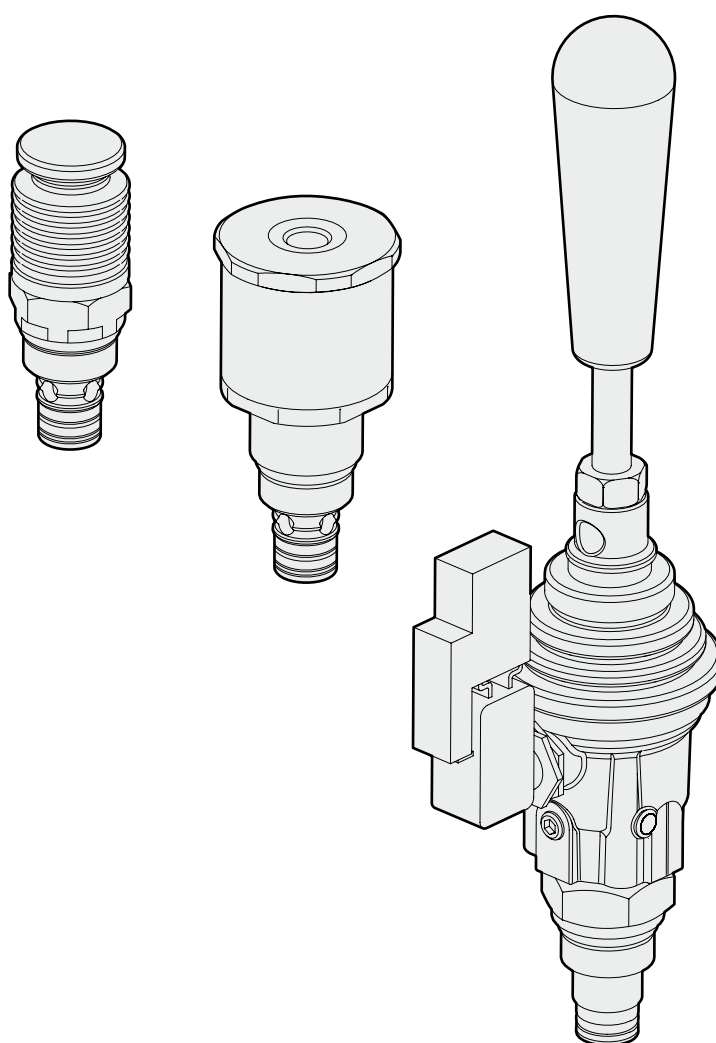
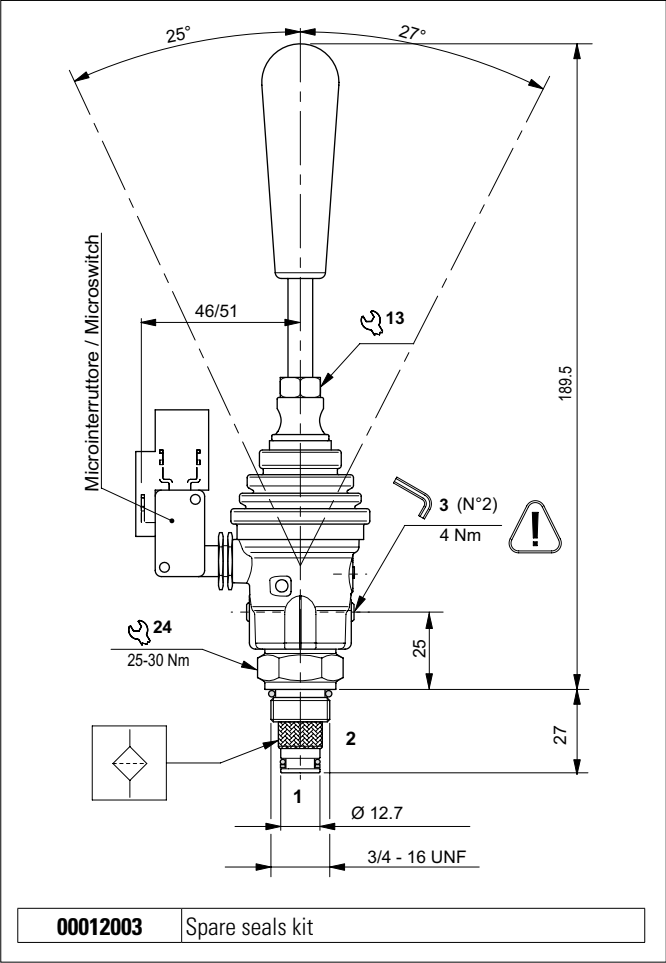


MANUAL AND PNEUMATIC OPERATED VALVES



LEVER OPERATED VALVES



The direct acting, normally closed 2-way 2 position directional valve with manual control releases (load sensitive) pressure enabling fluid to flow through the valve from 2 to 1.

Tapered poppet is in tempered and ground steel.

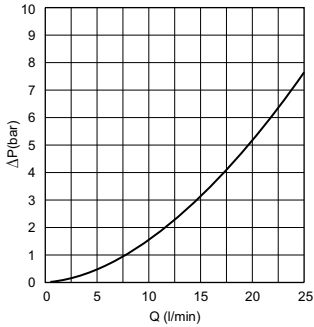
Micro switch controlling a motor-driven pump relay supplied on request.

The lever body is in die-cast aluminium and the valve body in galvanised steel.

HYDRAULIC FEATURES

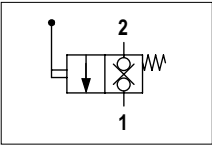
| | |
|--|--------------------------------|
| Max. working pressure | 300 bar |
| Max. Flow | 25 l/min |
| Max. Leakage (0 ÷ 5 drops/min) | 0 ÷ 0.25 cm ³ /min |
| Working Temperature | -25°C ÷ 60°C |
| Hydraulic fluid | DIN 51524 Mineral oils |
| Fluid viscosity | 10 ÷ 500 mm ² /s |
| Fluid temperature | -25°C ÷ 75°C |
| Max. contamin. level class with filter | ISO 4406:1999 - class 19/17/14 |
| Tightening torque | 25 ÷ 30 Nm |
| Weight | 0.25 kg |
| Cavity (3/4 - 16 UNF) | CD018014 (See section 15) |

PRESSURE DROPS (With valve completely open)

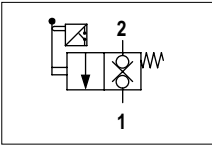


Fluid used: mineral based oil with viscosity 32 mm²/s at 40°C.

HYDRAULIC SYMBOLS

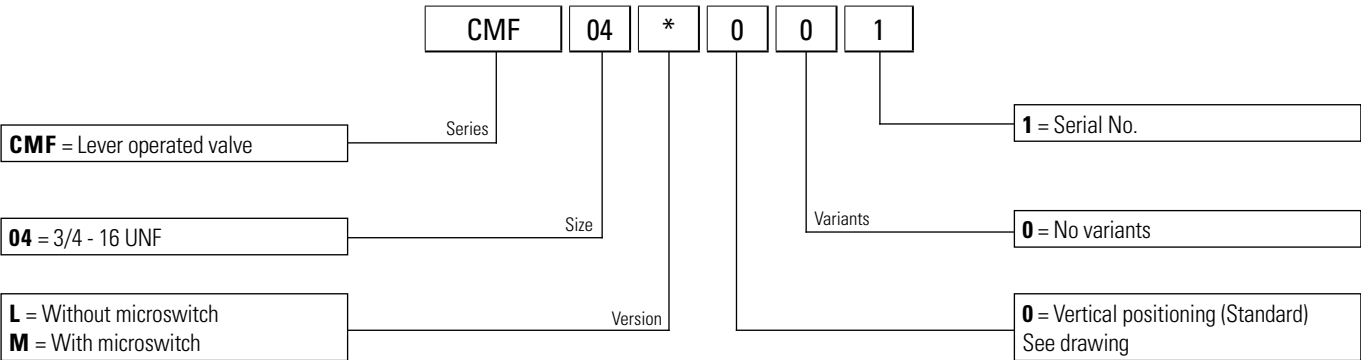


CMF04L
Without microswitch

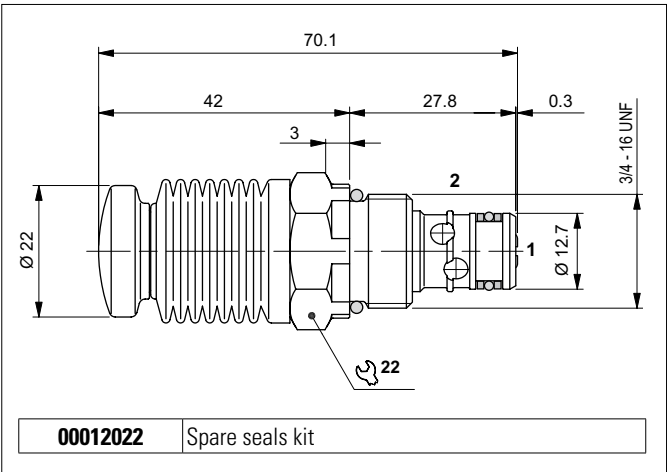


CMF04M
With microswitch

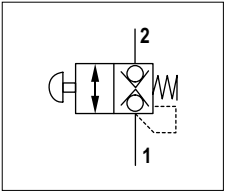
ORDERING CODE



BUTTON OPERATED VALVES



HYDRAULIC SYMBOL

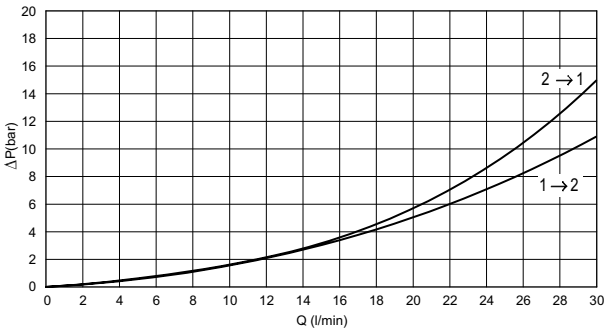


The direct acting, normally closed 2-way 2 position directional valve with manual control is used for emergencies. It is opened by pressing the button. The bi-directional tapered poppet is in tempered and ground steel. The valve body is in galvanised steel.

HYDRAULIC FEATURES

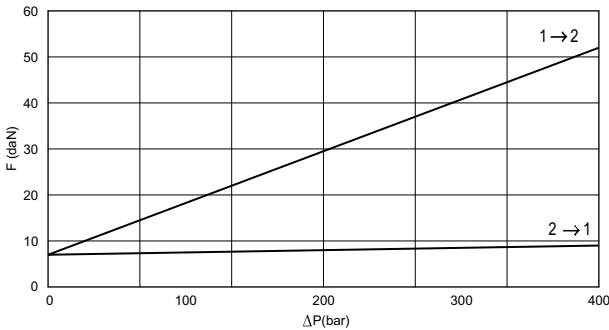
| | |
|--|--------------------------------|
| Max. opening pressure | 300 bar |
| Max. Flow | 30 l/min |
| Max. Leakage (0 ÷ 20 drops/min) | 0 ÷ 1 cm ³ /min |
| Hydraulic fluid | DIN 51524 Mineral oils |
| Fluid viscosity | 10 ÷ 500 mm ² /s |
| Fluid temperature | -25°C ÷ 75°C |
| Ambient temperature | -25°C ÷ 60°C |
| Max. contamin. level class with filter | ISO 4406:1999 - class 19/17/14 |
| Weight | 0.107 kg |
| Tightening torque | 25 ÷ 30 Nm |
| Cavity (3/4 - 16 UNF) | CD018006 (See section 15) |

PRESSURE DROPS



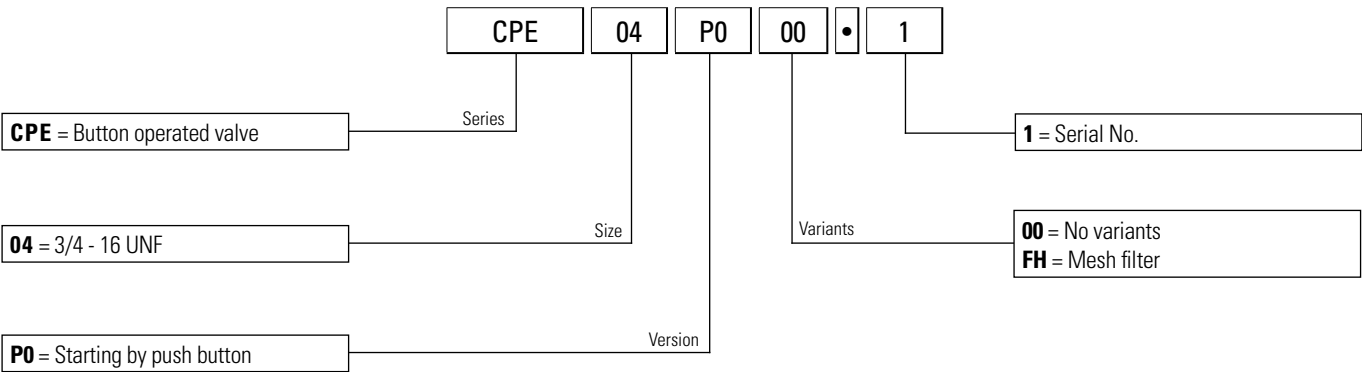
Fluid used: mineral based oil with viscosity 32 mm²/s at 40°C.

OPERAT. FORCE ON THE PUSH BUTTON

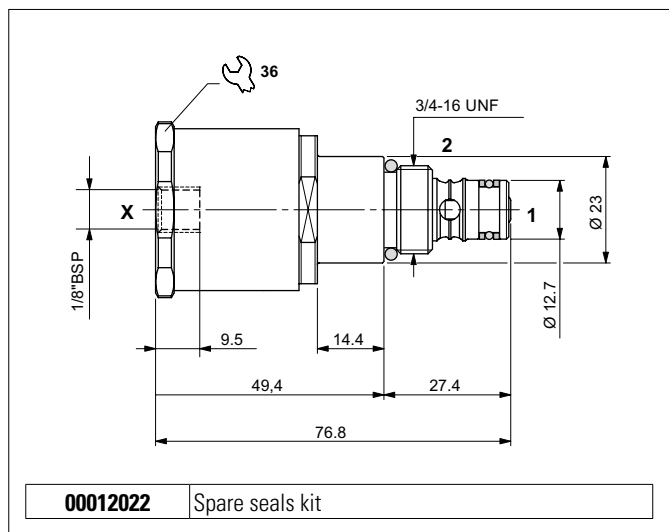


Fluid used: mineral based oil with viscosity 32 mm²/s at 40°C.

ORDERING CODE



PNEUMATIC OPERATED VALVES



The direct acting, bi-directional way normally closed 2-way 2 position valve with pneumatic control releases the pressure enabling fluid to flow through the valve in both directions.

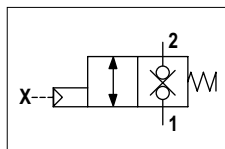
The bi-directional tapered poppet is in tempered and ground steel, released when the pilot branch X is connected to a pneumatic pressure signal.

The valve body is in galvanised steel.

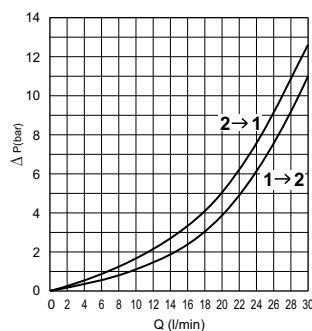
HYDRAULIC FEATURES

| | |
|--|--------------------------------|
| Max. opening pressure | 250 bar |
| Min. piloting pressure 1 → 2 | 5.5 bar |
| Min. piloting pressure 2 → 1 | 3.5 bar |
| Max. piloting pressure | 20 bar |
| Max. Flow | 30 l/min |
| Max. Leakage (0 ÷ 20 drops/min) | 0 ÷ 1 cm ³ /min |
| Hydraulic fluid | DIN 51524 Mineral oils |
| Fluid viscosity | 10 ÷ 500 mm ² /s |
| Fluid temperature | -25°C ÷ 75°C |
| Ambient temperature | -25°C ÷ 60°C |
| Max. contamin. level class with filter | ISO 4406:1999 - class 19/17/14 |
| Weight | 0.107 kg |
| Tightening torque | 25 ÷ 30 Nm |
| Cavity (3/4 - 16 UNF) | CD018006 (See section 15) |

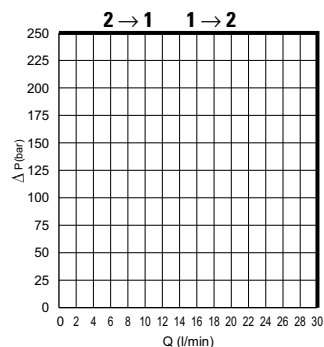
HYDRAULIC SYMBOL



PRESSURE DROPS



LIMITS OF USE



Fluid used: mineral based oil with viscosity 46 mm²/s at 40°C.

ORDERING CODE

