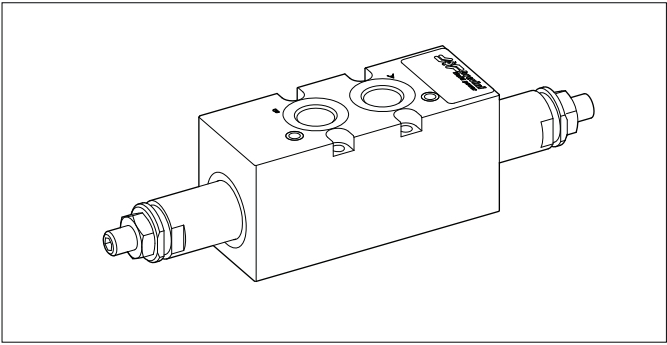


MODULAR MAX. PRESSURE BANKABLE VALVES



CM.3.M type pressure relief valves are available with a pressure range of 1 ÷ 320 bar. Adjustment is by means of a grub screw.

Single on A or B lines, and double on AB lines versions are available, with drainage to T.

All versions can accept three types of springs with calibrated ranges as shown in the specifications.

The cartridge, which is the same for all versions, is the direct acting type CMP10. The body valve is white zinc plated.

For the minimum permissible setting pressure depending on the spring, see minimum pressure setting curve.

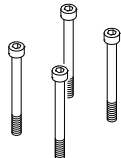
ORDERING CODE

CM	Modular bankable valve
3	Size
M	Maximum pressure valve
*	Port sizes: 1 = G3/8" 2 = 9/16" - 18UNF
**	Adjustment on the lines: A / B / AB
C	Type of adjustment Grub screw
*	Setting ranges at port A 0 = max. 15 bar (neutral spring) 1 = max. 50 bar (white spring) 2 = max. 150 bar (yellow spring) 3 = max. 320 bar (green spring)
*	Setting ranges at port B (Omit if the setting is same as that at port A) 0 = max. 15 bar (neutral spring) 1 = max. 50 bar (white spring) 2 = max. 150 bar (yellow spring) 3 = max. 320 bar (green spring)
**	00 = No variant V1 = Viton
2	Serial No.

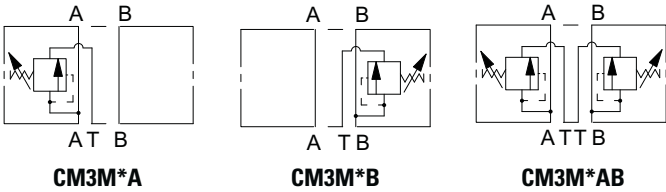
FEATURES

Max. operating pressure	320 bar
Setting ranges:	
spring 0	15 bar
spring 1	50 bar
spring 2	150 bar
spring 3	320 bar
Max. flow	40 l/min
Hydraulic fluids	Mineral oils DIN 51524
Fluid viscosity	10 ÷ 500 mm ² /s
Fluid temperature	-20°C ÷ 75°C
Ambient temperature	-20°C ÷ 60°C
Max. contamination level (filtro $\beta_{25} \geq 75$)	ISO 4406:1999: classe 21/19/16 NAS 1638: classe 10
Weight CM3MA/B	1.66 kg
Weight CM3MAB	1.68 kg

Accessories

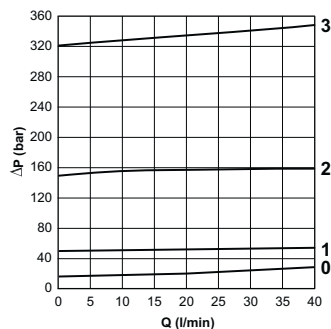
	Screw CODE	Description
	Q26074073 (Order No. 4 pcs)	Fixing screws UNI 5931 - M5x55: Material specifications min. 8.8 Tightening torque 5 Nm

HYDRAULIC SYMBOLS

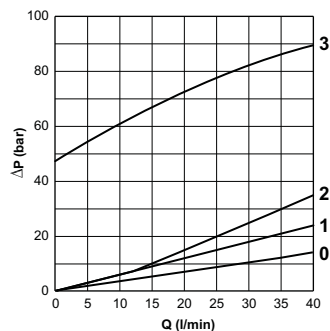


DIAGRAMS

PRESSURE - FLOW RATE



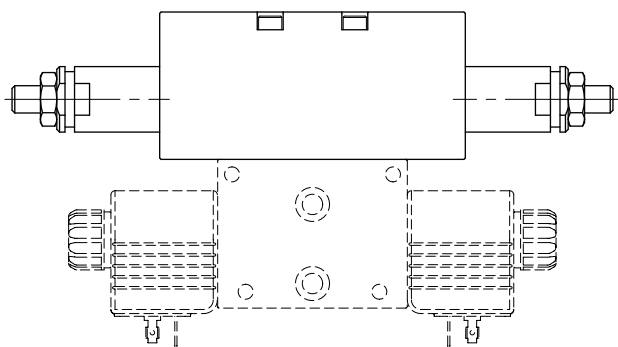
MINIMUM SETTING PRESSURE



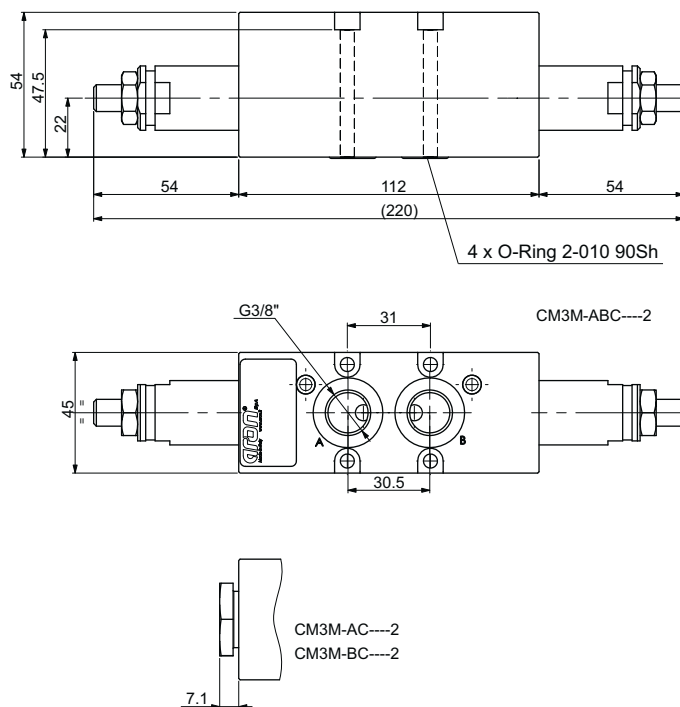
Curve 0,1,2,3:
setting ranges valve

The fluid used is a mineral based oil with
a viscosity of 46 mm²/s at 40°C.
The tests have been carried out at with a
fluid of a 40°C.

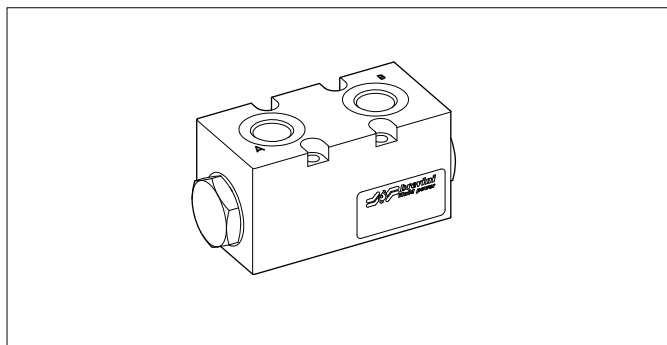
MOUNTING EXAMPLE WITH CDC3 VALVE



OVERALL DIMENSIONS



MODULAR PILOT OPERATED CHECK BANKABLE VALVES



CM3P type modular check bankable valves allow one way free flow by raising a conical shutter, while in the opposite direction the fluid can return by means of a small piston piloted by the pressure in the other line. They are available on single A or B lines, and on double A and B lines (see hydraulic symbols). The body valve is white zinc plated.

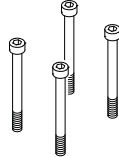
ORDERING CODE

CM	Modular bankable valve
3	Size
P	Piloted check valve
*	Port sizes: 1 = G3/8" 2 = 9/16"-18UNF
**	Control on lines A / B / AB
*	Minimum opening pressure 1 = 1 bar 5 = 5 bar
**	00 = No variant V1 = Viton
1	Serial No.

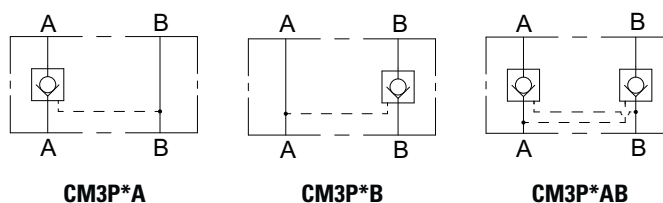
FEATURES

Max. operating pressure	350 bar
Minimum opening pressure spring 1	1 bar
Minimum opening pressure spring 5	5 bar
Piloting ratio	1:4
Max. flow	40 l/min
Hydraulic fluids	Mineral oils DIN 51524
Fluid viscosity	10 ÷ 500 mm ² /s
Fluid temperature	-20°C ÷ 75° C
Ambient temperature	-20°C ÷ 60°C
Max. contamination level (filter β ₂₅ ≥ 75)	ISO 4406:1999: class 21/19/16 NAS 1638: class 10
Weight	1.25 kg

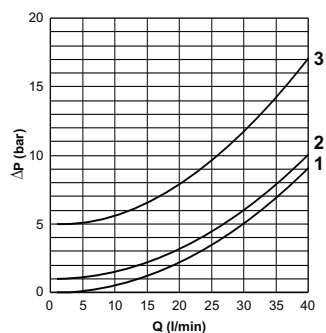
Accessories

	Screw CODE	Description
	Q26074072 (Order No. 4 pcs)	Fixing screws UNI 5931 - M5x50: Material specifications min. 8.8 Tightening torque 5 Nm

HYDRAULIC SYMBOLS



PRESSURE DROPS



1 = Piloted side flow

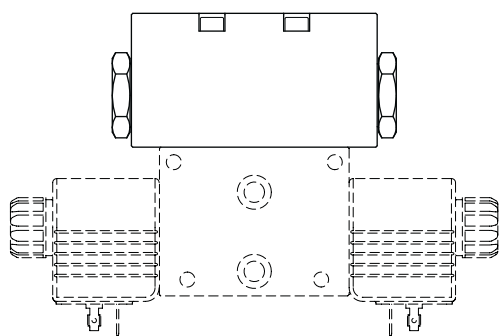
2 = 1 bar

3 = 5 bar

The fluid used is a mineral based oil with a viscosity of 46 mm²/s at 40°C.

The tests have been carried out with a fluid of a 40°C.

MOUNTING EXAMPLE WITH CDC3 VALVE



OVERALL DIMENSIONS

