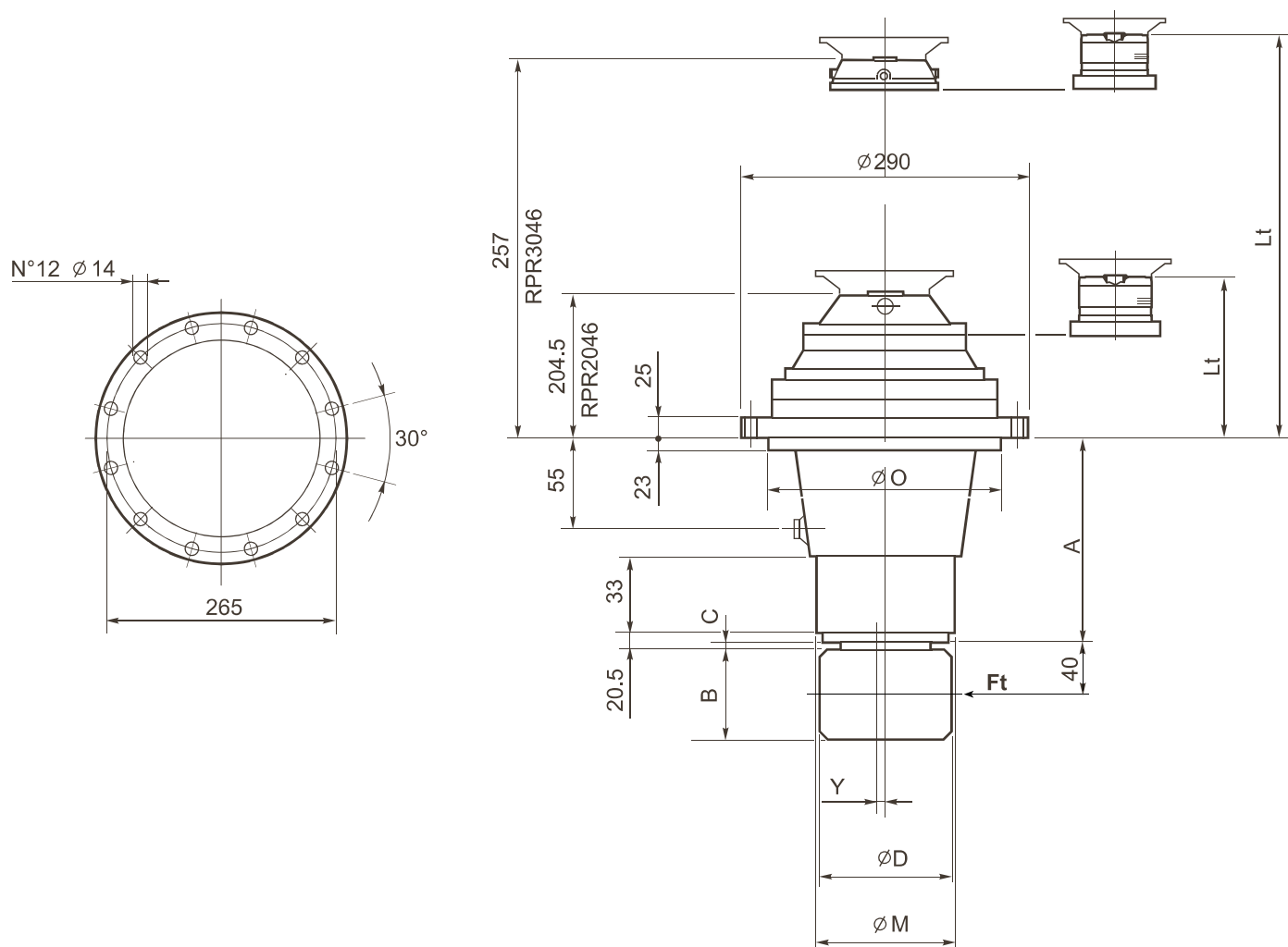




RPR046DC

[illegible]

$n_2 = 15$ rpm

Type	n ₁ max. [rpm]		
RPR2065	3.000		
RPR3065	3.500		

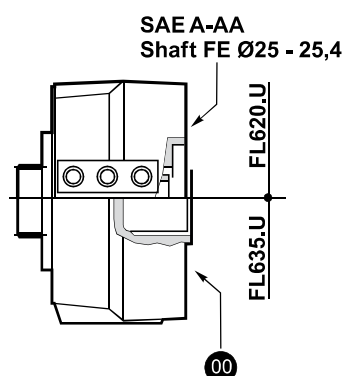
FL620.10

SAE A-AA
Shaft FE
Ø 25 - 25,4

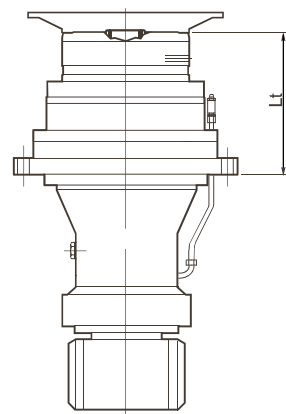
FL635.10
FL250 ÷ FL750

00

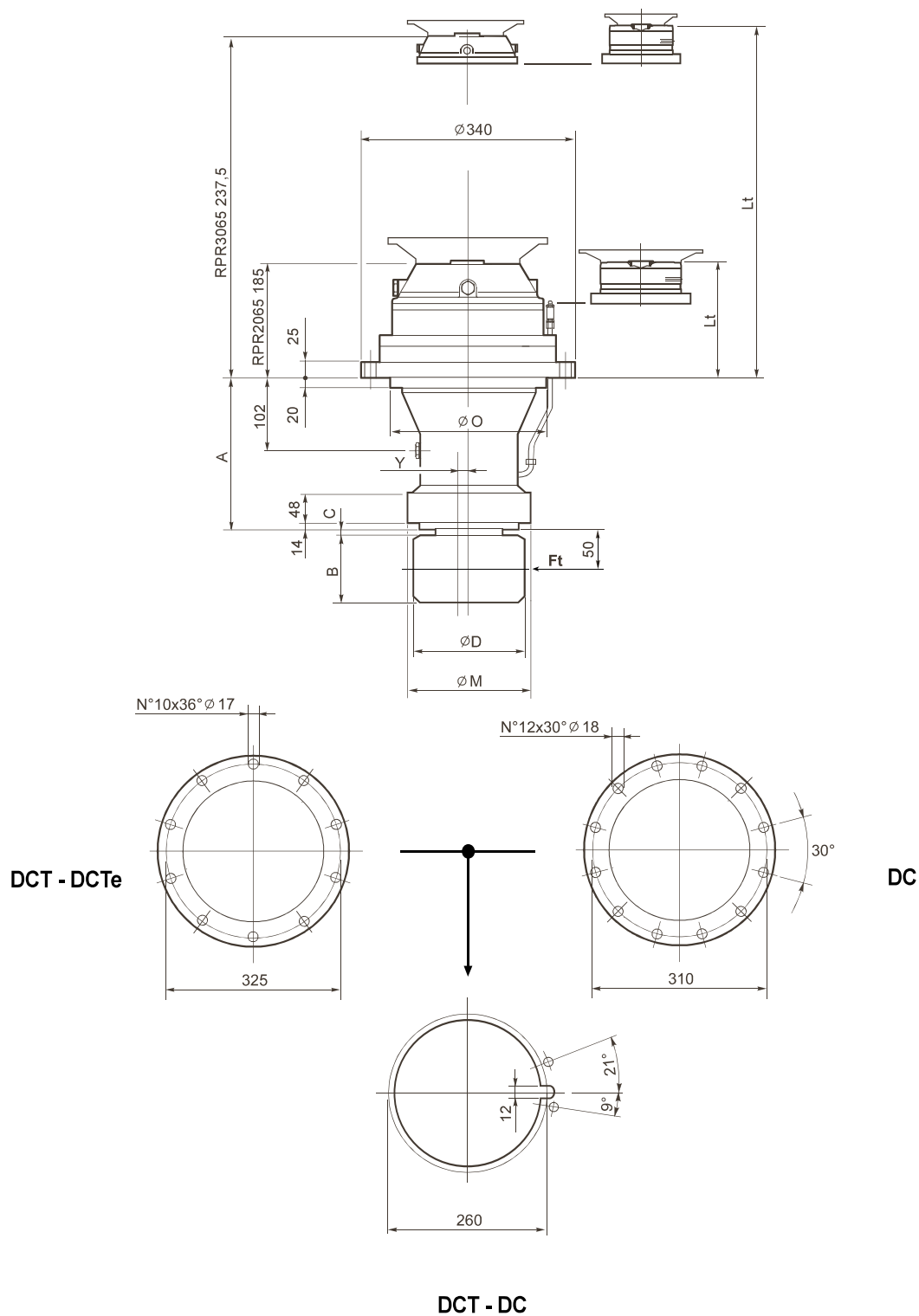
Type	FL620.10	FL635.10	FL250.4C FL250.6C	FL350.6C FL350.8C	FL450.6C FL450.8C	FL650.10C FL650.12C FL650.14C	FL750.10C FL750.12C FL750.14C
	Lt						
RPR2065	—	—	278,5	278,5	278,5	292	292
RPR3065	301,5	283	--	—	—	—	—



Type	FL620.U	FL635.U
	Lt	
RPR2065	289,5	276
RPR3065	342	328,5





RPR065DC



Support type	$F_{t_{FEM}}$ [N]	$F_{t_{max}}$ [N]	A	A1	$\varnothing M$	$\varnothing O$	$\varnothing F$	E	Y
DC	235.000	254.000	247	-	200 h8	250 h8	-	-	--
DCT	235.000	254.000	222	-	200 h7	250 f7	-	-	--
DCTe	235.000	254.000	222	-	200 h7	250 f7	-	-	1

$n_2 = 15$ rpm.

Type	n _r max. [rpm]		
RPR2065	3.000		
RPR3065	3.500		

[illegible]

FL620.10

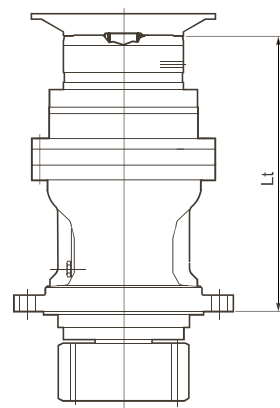
SAE A-AA
Shaft FE
Ø 25 - 25,4

FL635.10
FL250 ÷ FL750

00

Type	FL620.10	FL635.10	FL250.4C FL250.6C	FL350.6C FL350.8C	FL450.6C FL450.8C	FL650.10C FL650.12C FL650.14C	FL750.10C FL750.12C FL750.14C
	Lt						
RPR2065FAT-FATe	—	—	505,5	505,5	505,5	519	519
RPR3065FAT-FATe	528,5	510	--	—	—	—	—
RPR2065FAD	—	—	420	420	420	433,5	433,5
RPR3065FAD	443	424,5	--	—	—	—	—

Type	FL620.U	FL635.U
	Lt	
RPR2065FAT-FATe	516,5	504
RPR3065FAT-FATe	569	555,5
RPR2065FAD	431	418,5
RPR3065FAD	483,5	470



[illegible]

FAD

33  **brevini**
riduttori