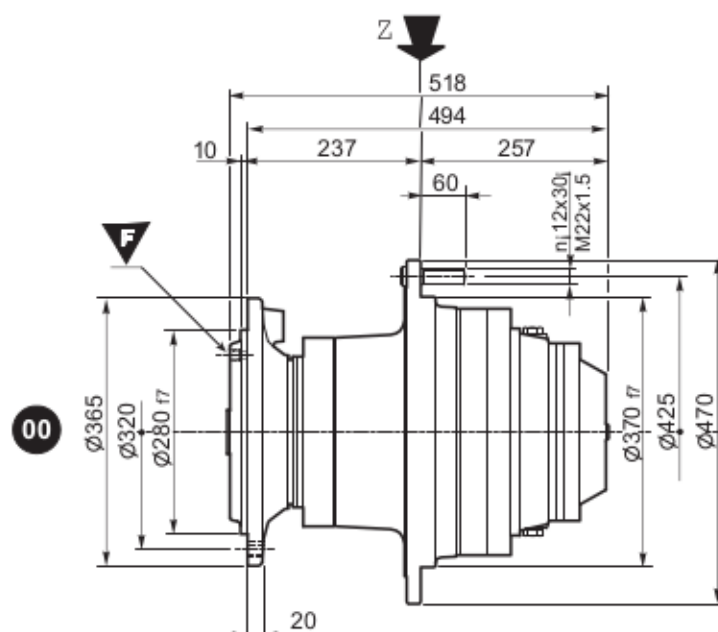
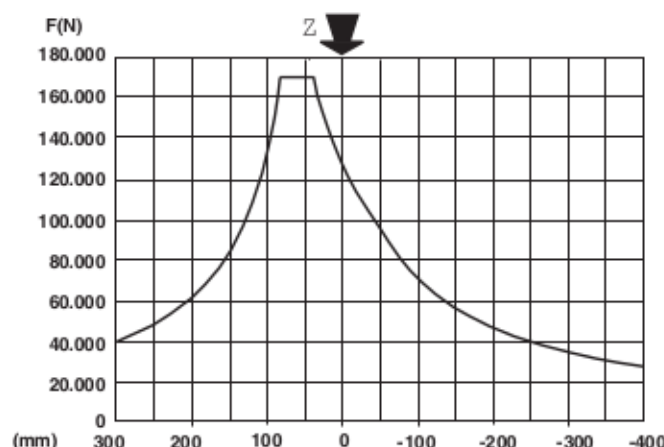
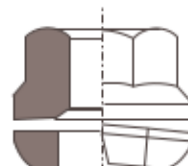
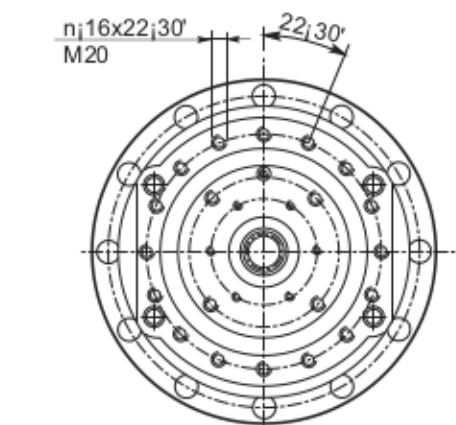


RSF / RFL159

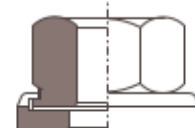


Carico max. / Maximum load
Max. Belastung / Charge max.
Carga máxima / Carga máxima


$$n_o \cdot h = 300.000$$


DIN 74361 B/C

Cod./Code/Kode 600M220BC 12
Code/Cód./Cód.



DIN 74361 H



Cod / Code / Kode 600M220H012
Code / Cód. / Cód.

Archiata; specificare il codice
On request; p/s. specify the code
Auf Anfrage; bitte Kenn-Nr. angeben
Sur demande; spécifier le code
Opcional; indicar el código

Em caso de pedido, especificar o código

Dati tecnici / Specifications / Technische Daten

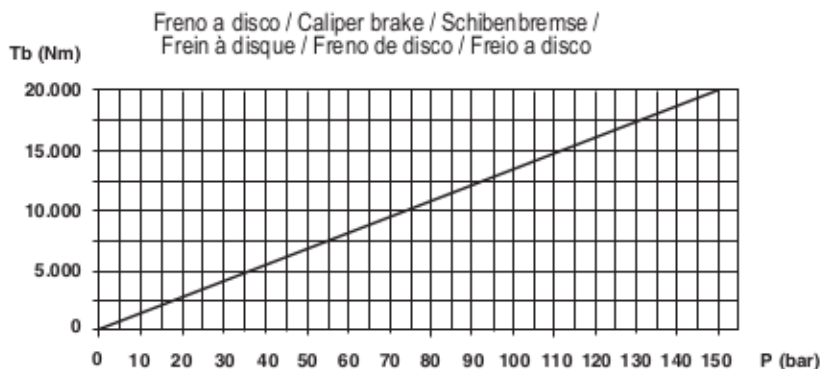
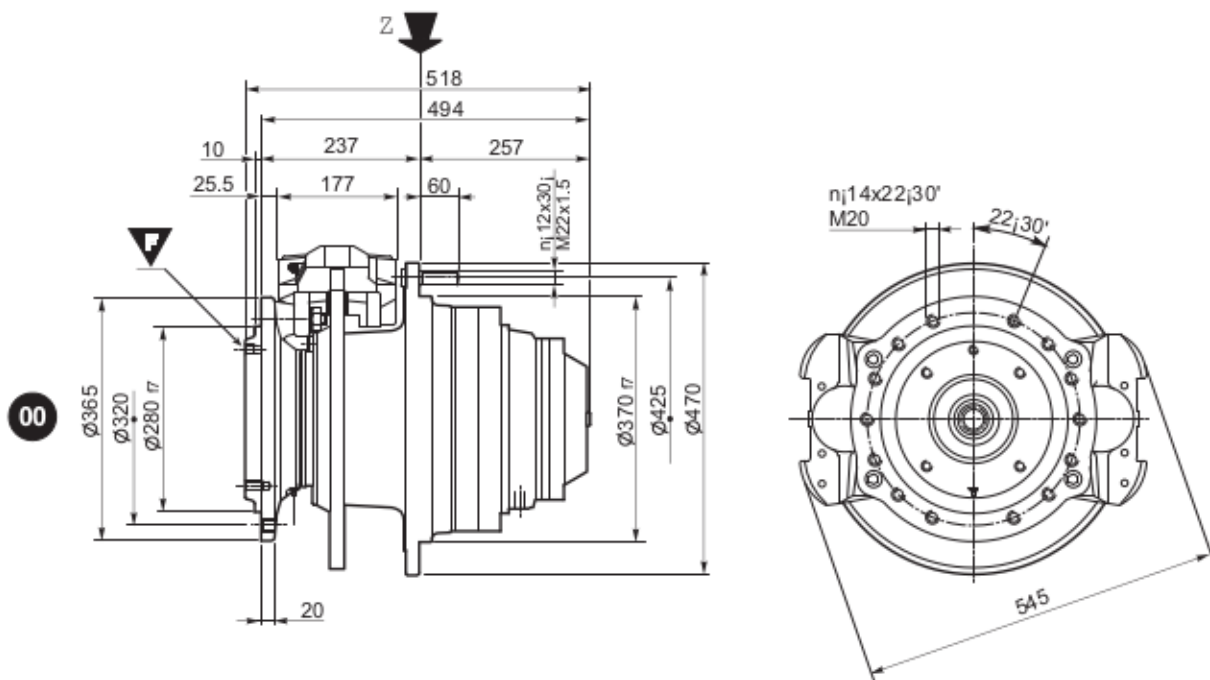
Caractéristiques techniques / Datos técnicos / Características técnicas

Tipo / Type / Typ / Type / Tipo / Tipo	T _{2 max.} [Nm]	T _{1 max.} [Nm]	F _{max.} [N]	n _{1 max.} [rpm]	i = (*) non disinserbile / no disengage / nicht ausschaltbar / non décrabotables / sin embrague / não desengatáveis	 Kg.	 It.
RSF 159	22.000	1.100	170.000	3.500	12,65 - 17 - 20,21 - 25,57 - 29,85* - 36,29*	135	4,5
RFL 159	22.000	1.100	170.000	3.500	12,65 - 17 - 20,21 - 25,57 - 29,85* - 36,29*	140	4,5

Freno Lamellare / Multidisc Brake / Lamellenbremse / Frein à lamelles / Freno de láminas / Freio lamelar

Pa [bar]	Pmax [bar]	Tf max. [Nm]	1/4" G
20	315	610	

RFD159



Cod./Code/Kode 600M200BC12
Code/Cód./Cód.



DIN 74361 B/C

Cod./Code/Kode 600M200H012
Code/Cód./Cód.



DIN 74361 H

A richiesta; specificare il codice
On request; pls. specify the code
Auf Anfrage; bitte Kenn-Nr. angeben
Sur demande; spécifier le code
Opcional; indicar el código
Em caso de pedido, especificar o código

Dati tecnici / Specifications / Technische Daten Caractéristiques techniques / Datos técnicos / Características técnicas

Tipo / Type / Typ / Type / Tipo / Tipo	T _{2 max.} [Nm]	T _{1 max.} [Nm]	F _{max.} [N]	n _{1 max.} [rpm]	i = (*) non disinsensibile / no disengage / nicht ausschaltbar / non débrabotables / sin embrague / não desengatáveis	Kg.	lt.
RFD159	22.000	1.100	170.000	3.500	12,65 - 17 - 20,21 - 25,57 - 29,85* - 36,29*	155	4,5

Freno Lamellare / Multidisc Brake / Lamellenbremse / Frein à lamelles / Freno de láminas / Freio lamelar

Pa [bar]	Pmax [bar]	Tf max. [Nm]	▽
20	315	610	1/4" G