

# SMW18004

$n_2 = 15 \text{ rpm}$

i =	92,6	108,5	121,0	137,9	161,8	198,8
FLs960	FLs960.18C	FLs960.14C		FLs960.12C	FLs960.10C	FLs960.8C
$T_{\text{FEM M5(T5-L2)}} [\text{Nm.}]$	236.600	230.800	231.100	231.400	231.700	178.000
$T_{\text{STAT}} [\text{Nm.}]$	390.000					

**ATTENZIONE:** per classi di appartenenza diverse dalle FEM M5(T5-L2), vedi tab. 1 pag 12.  
Per valori diversi di  $n_2 = 15 \text{ rpm}$ , contattare il Servizio Tecnico Commerciale Brevini Riduttori.

**IMPORTANT:** for mechanism groups other than FEM M5 (T5-L2), see table 1 on page 12.  
For output speeds other than  $n_2 = 15 \text{ rpm}$ , contact Brevini Riduttori's Technical Service.




**ACHTUNG:** für Zugehörigkeitsklassen, die von den FEM - Klassen M5(T5-L2) abweichen, siehe Tabelle 1, Seite 13.  
Wenden Sie sich für Werte, die von  $n_2 = 15 \text{ U/min}$  abweichen, an die technische Verkaufsberatung Brevini Riduttori.

**ATTENTION:** pour les classes d'appartenance différentes de FEM M5(T5-L2), voir tab. 1 page 13.  
Pour les valeurs différentes de  $n_2 = 15 \text{ rpm}$ , contacter le Service technico-commercial Brevini Riduttori.

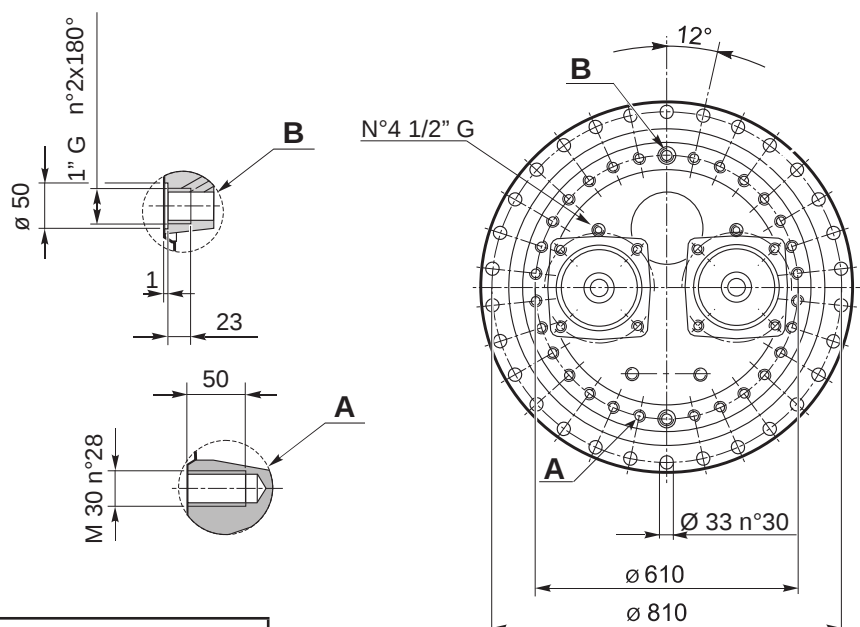
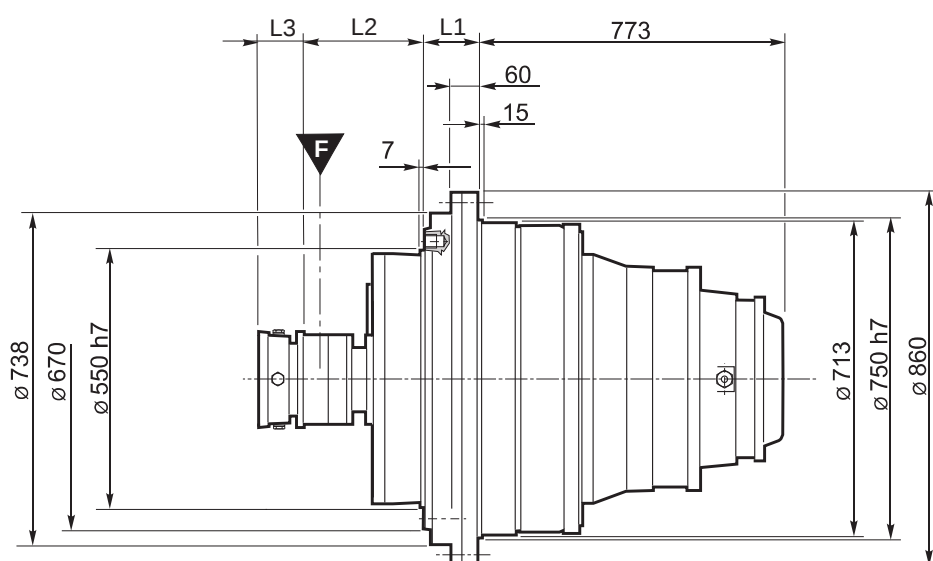
**ATENCIÓN:** para categorías diferentes de la FEM M5 (T5-L2), véase la tabla 1 de la pág. 14.  
Para valores de  $n_2$  diferentes de 15 rpm, contactar con el Servicio Técnico de Brevini.

**ATENÇÃO:** para classes diferentes da FEM M5(T5-L2), consultar tab. 1 à pág. 14.  
Para valores diferentes de  $n_2 = 15 \text{ rpm}$ , entrar em contato com o Serviço Técnico Comercial da Brevini Riduttori.

Type	Connection	Type	Connection
Hydromatik A6VM200 A	Integrated		
Hydromatik A6VM250 Z	Integrated		
	(AD)		(AD)

Freni - Brakes - Bremsen - Freins - Frenos - Freios							Riduttore - Gearbox - Getriebe Réducteur - Reductor - Redutor	
	Type	$n_1 \text{ max}$ [rpm]	$T_B$ [Nm. $\pm 10\%$ ]	P [bar]	Pmax [bar]			
(AD)	FLs960.8C	4.000	1.019	22	315	M12 x 1,5 Length 15 mm.		
(AD)	FLs960.10C	4.000	1.274	22	315	M12 x 1,5 Length 15 mm.		
(AD)	FLs960.12C	4.000	1.528	22	315	M12 x 1,5 Length 15 mm.		
(AD)	FLs960.14C	4.000	1.783	22	315	M12 x 1,5 Length 15 mm.		
(AD)	FLs960.18C	4.000	2.293	22	315	M12 x 1,5 Length 15 mm.		

# SMW18004



L1							
Standard	G4						
120	118 ±2						
		L2					
Motore - Motor- Motor		FLs750	FLs750-OR / AO	FLs960	FLs960-OR / AO	FLs875	FLs875-OR / AO
Moteur - Motor - Motor				347			
		L3					
Hydromatik A6VM200 A				80			
Hydromatik A6VM250 Z							