

SMW25004

$n_2 = 15 \text{ rpm}$

i =	106,5	124,8	135,3	158,6	186,1	228,6
FLs960	FLs960.16C	FLs960.14C	FLs960.12C	FLs960.10C		FLs960.8C
$T_{\text{FEM M5(T5-L2)}} [\text{Nm.}]$	324.300	321.800	325.300	322.600	323.100	263.800
$T_{\text{STAT}} [\text{Nm.}]$	590.000					

ATTENZIONE: per classi di appartenenza diverse dalle FEM M5(T5-L2), vedi tab. 1 pag 12.
Per valori diversi di $n_2 = 15 \text{ rpm}$, contattare il Servizio Tecnico Commerciale Brevini Riduttori.

IMPORTANT: for mechanism groups other than FEM M5 (T5-L2), see table 1 on page 12.
For output speeds other than $n_2 = 15 \text{ rpm}$, contact Brevini Riduttori's Technical Service.




ACHTUNG: für Zugehörigkeitsklassen, die von den FEM - Klassen M5(T5-L2) abweichen, siehe Tabelle 1, Seite 13.
Wenden Sie sich für Werte, die von $n_2 = 15 \text{ U/min}$ abweichen, an die technische Verkaufsberatung Brevini Riduttori.

ATTENTION: pour les classes d'appartenance différentes de FEM M5(T5-L2), voir tab. 1 page 13.
Pour les valeurs différentes de $n_2 = 15 \text{ rpm}$, contacter le Service technico-commercial Brevini Riduttori.

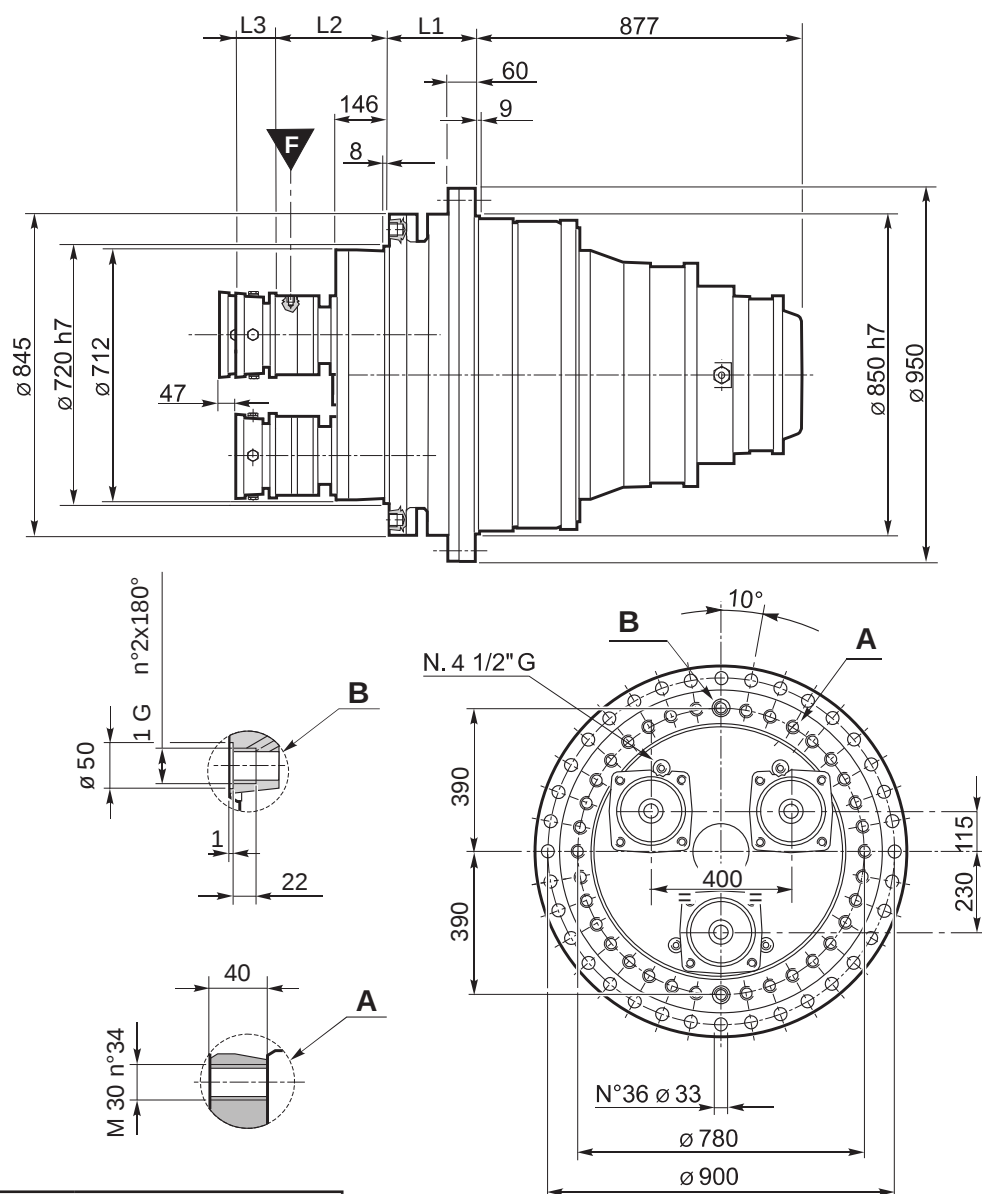
ATENCIÓN: para categorías diferentes de la FEM M5 (T5-L2), véase la tabla 1 de la pág. 14.
Para valores de n_2 diferentes de 15 rpm, contactar con el Servicio Técnico de Brevini.

ATENÇÃO: para classes diferentes da FEM M5(T5-L2), consultar tab. 1 à pág. 14.
Para valores diferentes de $n_2 = 15 \text{ rpm}$, entrar em contato com o Serviço Técnico Comercial da Brevini Riduttori.

Type	Connection	Type	Connection
Hydromatik A6VM200 A	Integrated		
Hydromatik A6VM250 Z	Integrated		
	(AD)		(AD)

Freni - Brakes - Bremsen - Freins - Frenos - Freios							Riduttore - Gearbox - Getriebe Réducteur - Reductor - Redutor	
	Type	$n_1 \text{ max}$ [rpm]	T_B [Nm. $\pm 10\%$]	P [bar]	Pmax [bar]			
(AD)	FLs960.8C	4.000	1.019	22	315	M12 x 1,5 Length 15 mm.		90
(AD)	FLs960.10C	4.000	1.274	22	315	M12 x 1,5 Length 15 mm.		90
(AD)	FLs960.12C	4.000	1.528	22	315	M12 x 1,5 Length 15 mm.		90
(AD)	FLs960.14C	4.000	1.783	22	315	M12 x 1,5 Length 15 mm.		90
(AD)	FLs960.16C	4.000	2.038	22	315	M12 x 1,5 Length 15 mm.		90

SMW25004



L1							
Standard	G4						
194	192 ±2						
		L2					
Motore - Motor- Motor		FLs750	FLs750-OR / AO	FLs960	FLs960-OR / AO	FLs875	FLs875-OR / AO
Moteur - Motor - Motor				532			
		L3					
Hydromatik A6VM200 A				80			
Hydromatik A6VM250 Z							