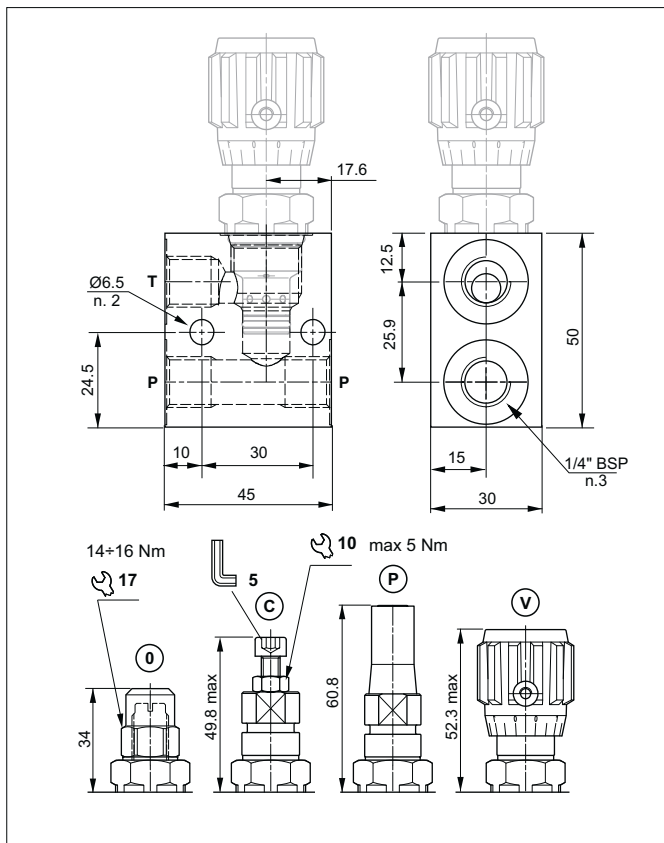


DIRECT ACTING PRESSURE RELIEF VALVES - IN-LINE MOUNTING

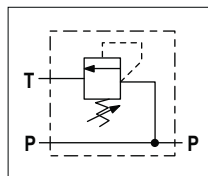


The direct acting relief valve with CMP04 cartridge limits the pressure in the hydraulic circuit. It raises the safety level by making it impossible for the plant operators to set a higher pressure rating, than that specified in the catalogue. It has a pack spring with a mechanical stop (only standard screw and nut). It has a high-resistance aluminium body. The cartridge is in galvanised steel.

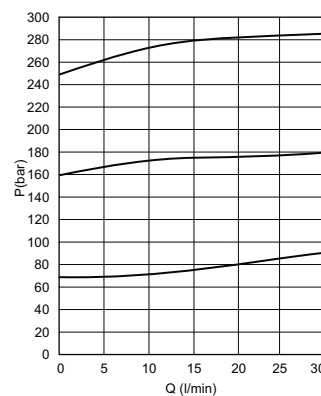
Max. opening pressure	330 bar
Setting range:	
Spring B (white)	max 70 bar
Spring G (yellow)	max 160 bar
Spring V (green)	max 330 bar
Max. Flow	30 l/min
Hydraulic fluid	DIN 51524 Mineral oils
Fluid viscosity	10 ÷ 500 mm ² /s
Fluid temperature	-25°C ÷ 75°C
Ambient temperature	-25°C ÷ 60°C
Max. contamin. level class with filter	ISO 4406:1999 - class 19/17/14
Weight (0 version)	0.235 kg

The minimum permissible setting pressure depending on the spring: see curves below

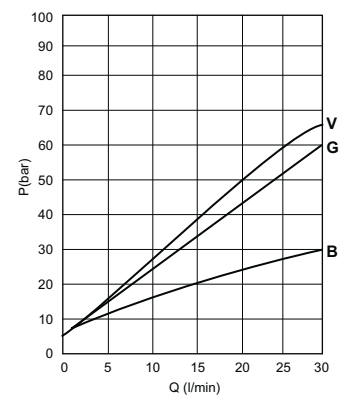
HYDRAULIC SYMBOL



PRESSURE-FLOW RATE



MIN.SETTING PRESSURE



1 = VMP02*B.. - 2 = VMP02*G.. - 3 = VMP02*V..

Fluid used: mineral based oil with viscosity 32 mm²/s at 40°C.

ORDERING CODE

