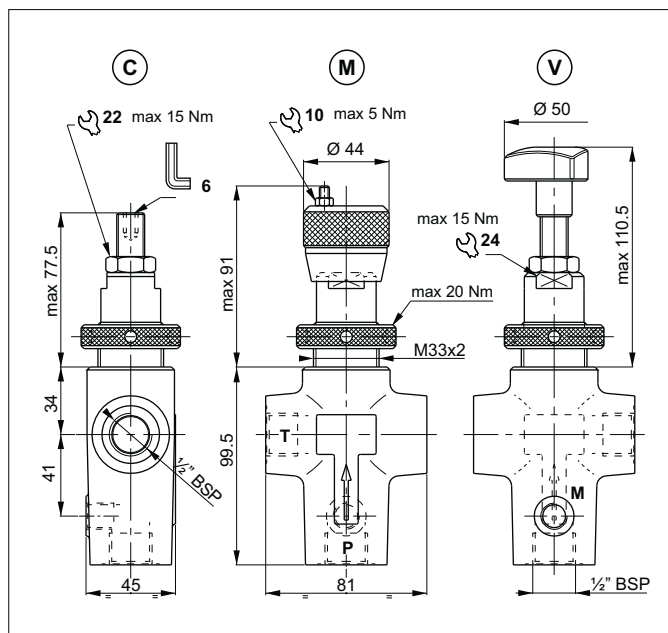
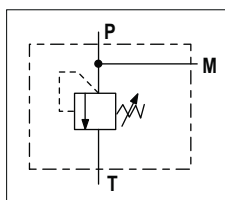


DIRECT ACTING PRESSURE RELIEF VALVES - IN-LINE MOUNTING

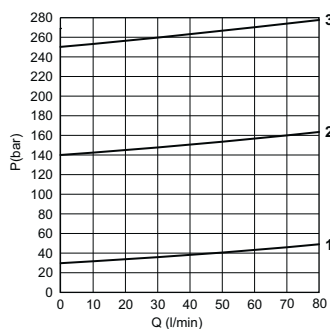


The direct acting relief valve with CMP20 cartridge limits the pressure in the hydraulic circuit to the calibration field specified in the catalogue. It has a manganese phosphate coated cast iron body. The cartridge is in galvanized steel.

HYDRAULIC SYMBOL



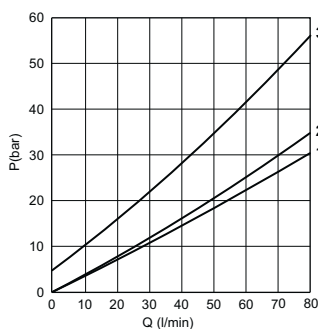
PRESSURE-FLOW RATE



1 = VMP20.1.. - 2 = VMP20.2.. - 3 = VMP20.3..

Fluid used: mineral based oil with viscosity 46 mm²/s at 40°C.

MIN.SETTING PRESSURE



HYDRAULIC FEATURES

Max. opening pressure	250 bar
Setting range:	
Spring 1 (white)	max 30 bar
Spring 2 (yellow)	max 140 bar
Spring 3 (green)	max 250 bar
Max. Flow	80 l/min
Hydraulic fluid	DIN 51524 Mineral oils
Fluid viscosity	10 ÷ 500 mm ² /s
Fluid temperature	-25°C ÷ 75°C
Ambient temperature	-25°C ÷ 60°C
Max. contamin. level class with filter	ISO 4406:1999 - class 19/17/14
Weight	1.7 kg

The minimum permissible setting pressure depending on the spring: see curves.

ORDERING CODE

